

# Acidity Test Kit

**TK1000-Z**  
red caps

**KIT COMPONENTS:**

SH6255-B Sodium Hydroxide 1.0N, 60 mL  
 PH1605-A Phenolphthalein Indicator, 30 mL  
 SY-2010-P Syringe, 10 mL  
 VL-1005-V Vial, 10-50 mL

**SAFETY TIPS:**



Wear Gloves



Use Eye Protection



Read SDS

**TESTING TIPS:**



Collect Accurate Sample



Hold Bottles Vertically



Ensure Proper Lighting

**INTERFERENCES:** Turbid or highly colored samples may mask the color change at the endpoint.

**ATTENTION:** As necessary, calibrate this kit against a known standard made with plant / make-up water. Be sure to collect a representative sample.

**GENERIC FACTOR:**

# of drops x 0.02 = % Acidity as Phosphoric Acid

Video Procedure

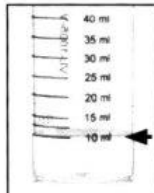


TK1000-Z-INST REV 08/17

**Acidity Test Kit**

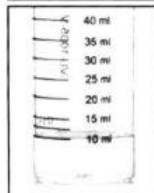
**TK1000-Z**

**1** Rinse vial three times with sample to be tested. **Fill vial to 10 mL.**



STEP 1

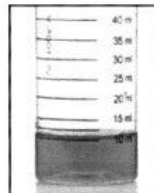
**2** Add 3 drops of Phenolphthalein Indicator (PH1605) and swirl to mix. The sample should remain colorless.



STEP 2

**3** Add Sodium Hydroxide 1.0N (SH6255) one drop at a time while swirling. Count the number of drops until the sample color turns pink.

# drops x factor = amount of product



STEP 3

FONIC LOW PH PR-170	
USE SODIUM HYDROXIDE	
DILUTION	DROPS
64 TO 1	7
75 TO 1	6
90 TO 1	4
120 to 1	3

FONIC LOW PH CITRUS PR-174	
USE SODIUM HYDROXIDE	
DILUTION	DROPS
64 TO 1	4
75 TO 1	3
90 TO 1	2
120 to 1	1

FONIC LOW PH SPECIAL PR-169	
USE SODIUM HYDROXIDE	
DILUTION	DROPS
66 TO 1	19
75 TO 1	15
98 TO 1	12
120 to 1	9
140 to 1	8

STINGRAY PLUS PR-164	
USE SODIUM HYDROXIDE	
DILUTION	DROPS
64 TO 1	5
75 TO 1	4
90 TO 1	3
120 to 1	2

ACTION LOW PH PRESOAK AT-101	
USE SODIUM HYDROXIDE	
DILUTION	DROPS
64 TO 1	4
75 TO 1	3
90 TO 1	2
120 to 1	1

SALT ASSAULT PR-161	
USE SODIUM HYDROXIDE	
DILUTION	DROPS
50 TO 1	4
75 TO 1	3
120 TO 1	2

# Alkaline Test Kit

# TK5026-Z yellow caps

### KIT COMPONENTS:

PH1605-A Phenolphthalein Indicator, 30 mL  
 SA7575-B Sulfuric Acid 0.25N, 60 mL  
 VL-0525-V Vial, 5-25 mL

### SAFETY TIPS:



Wear  
Gloves



Use Eye  
Protection



Read  
SDS

### TESTING TIPS:



Collect  
Accurate  
Sample



Hold  
Bottles  
Vertically



Ensure  
Proper  
Lighting

**INTERFERENCES:** Turbid samples may mask the color change at the endpoint.

**ATTENTION:** As necessary, calibrate this kit against a known standard made with plant / make-up water. Be sure to collect a representative sample.

### GENERIC FACTOR:

# drops x 40 = ppm Alkalinity as NaOH

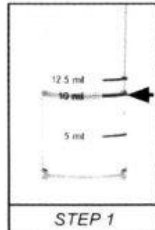


TK5026-Z-INST REV 10/13

## Alkaline Test Kit

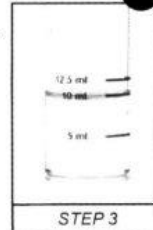
## TK5026-Z

**1** Rinse vial three times with sample to be tested. **Fill vial to 10 mL.**

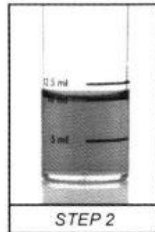


**3 Add Sulfuric Acid 0.25N** (SA7575) one drop at a time while swirling. Count the number of drops until the sample color changes from pink to clear.

# drops x factor = amount of product



**2 Add 3 drops of Phenolphthalein Indicator** (PH1605) and swirl to mix. The sample should turn pink.



REDSTORM F/B PR-160	
USE SULFURIC ACID	
DILUTION	DROPS
64 TO 1	11
75 TO 1	9
90 TO 1	8
120 TO 1	7

STORM HYPER OR XT PR-105-102	
USE SULFURIC ACID	
DILUTION	DROPS
64 TO 1	14
75 TO 1	12
90 TO 1	10
120 TO 1	9

AQUA MATRIX PR-190	
USE SULFURIC ACID	
DILUTION	DROPS
64 TO 1	11
75 TO 1	9
90 TO 1	8
120 TO 1	7

IN BAY PRESOAK KR-010	
USE SULFURIC ACID	
DILUTION	DROPS
64 TO 1	15
75 TO 1	11
90 TO 1	10
120 TO 1	7

ACTION PRESOAK AT-102	
USE SULFURIC ACID	
DILUTION	DROPS
98 TO 1	22
134 TO 1	17
170 TO 1	14
215 TO 1	10

ACTION TIRE CLEANER AT-130	
USE SULFURIC ACID	
DILUTION	DROPS
64 TO 1	30
75 TO 1	17
90 TO 1	14
120 TO 1	11

MAKO ORANGE ST-300	
USE SULFURIC ACID	
DILUTION	DROPS
48 TO 1	6
64 TO 1	5