

# VACUUMS & ACCESSORIES

## J.E. ADAMS CENTRAL VACUUM SYSTEMS

### CENTRAL VACUUM SYSTEMS - DUAL ARCH, SINGLE ARCH & NO ARCH SYSTEMS

J.E. ADAMS



- (1) Mat holder per stanchion
- Claw hangers/crevice tool holders
- Stainless steel dust collector w/ 20 gallon dirt bin
- Stainless steel pre-filter collectors
- Industrial grade centrifugal producers
- Available in stainless steel and most colors
- Optional accessories include turbine mufflers, producer stand, colored hoses, pipe hanger kits, vacuum gauge, motor starters and more!

#### HELPFUL HINT:

#### MAKE ORDERING EASIER & FASTER - HAVE THE FOLLOWING INFORMATION READY WHEN CALLING:

- How many stalls?
- How many hose drops?
- Will you be using mounted vacuums or central vacuum system?
- Coin-op vacs or push-button vacs?



#### NO ARCH SYSTEM

J.E. ADAMS



- Ideal for indoor applications (mechanic shops)
- Excellent option for dealerships and car rental lots
- Sleek compact design
- Extension kit available for pipe hanging
- Quick release hose couplers
- Includes 15' black hose
- Allows easy access to claw or crevice tool
- 16¼" x 16¼" mounting plate (1" holes at 14" x 14")

**CALL** CVS5000

#### SINGLE ARCH SYSTEM

J.E. ADAMS



- Great for commercial vacuum customers
- Ideal for detail shops, car rental lots and dealerships
- Quick release hose couplers
- Stainless steel trash can holders
- Zinc primer base with a powder coated finish

**CALL** CVS5100

#### PRODUCER & MAIN COLLECTOR

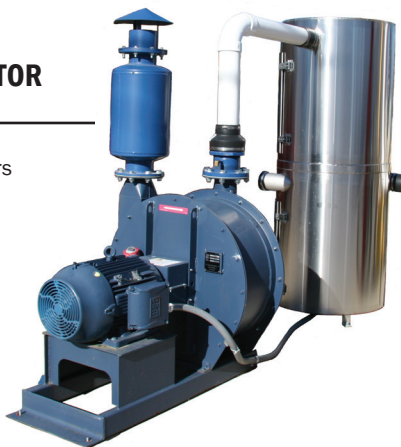
J.E. ADAMS

##### TURBINE PRODUCER:

- Industrial grade centrifugal producers
- Cast aluminum impellers
- Carbon steel flanged inlets
- Automatic bearing lubricators
- 3525 RPM
- Casing is 14G CRS
- Optional accessories include turbine mufflers, producer stand and more!

##### MAIN COLLECTOR:

- Constructed of 12 gauge stainless steel
- (10) 1 micron filter bags
- Includes 20 gallon dust collector bin
- (2) Adjustable hinges per door for secure seal



**CALL TO ORDER**



NEW LIGHTING & CANOPY OPTIONS!

#### DUAL ARCH SYSTEM

J.E. ADAMS



- Allows easy access to claw and crevice tools
- Quick release hose couplers
- Stainless steel trash can holders
- Coolaroo architectural shade canopies (shown & optional)
- NOW AVAILABLE: LED light kits (6ft) and V-Shaped Canopies!

**CALL** CVS5200

# VACUUMS & ACCESSORIES

## J.E. ADAMS VACUUMS



Swivel Boom only.  
Vacuum not included.



### 360° SWIVEL BOOM

J.E. ADAMS



- 110" from the back of the mounting plate to the tip of the arch
- Connects to most J.E. Adams Vacuums
- 1½" or 2" Vacuum hose for consumer & 2" hose inside the boom
- Quick disconnect hose to prevent theft
- Includes a claw hanger
- Mounting Plate is 16" x 16"
- Height of arches: 152"
- **180° STOPPER COMES STANDARD ON SWIVEL BOOMS**

PRICE	SWIVEL BOOM	COLOR
<b>CALL</b>	<b>VBA75000B</b>	Blue
	<b>VBA75000R</b>	Red
	<b>VBA75000Y</b>	Yellow
	<b>VBA75000G</b>	Green
ALSO AVAILABLE STAINLESS STEEL AND OTHER COLORS		
<b>CALL</b>	<b>VBA75000-655</b>	Add-on stopper. Must be purchased with 180° stopper for angles less than 180°

### ARCH SYSTEM LIGHT KITS

J.E. ADAMS

<b>VBA35000584A</b>	4' LED Light, Fixed Vac Boom
<b>35000-58HV-6</b>	6' LED Light, Fixed Vac Boom
<b>VBA35000588A</b>	8' LED Light, Fixed Vac Boom
<b>VBA350005980AS</b>	LED Tube Light Power Supply Assembly

### 75000 SERIES ACCESSORIES

J.E. ADAMS

<b>VBA75000-220</b>	Swivel Arch Centering Kit
<b>VBA75000-111A</b>	Mat Rack Assembly
<b>VBA75000-114A</b>	Trash Can Assembly
<b>VBA75000-140A</b>	Trash Can Assembly, Stainless Steel Wrap

### KIT FOR PUSH BUTTON WITH KEY SWITCH LOCKOUT

J.E. ADAMS

- Easily switch your coin operated-vac unit to a free vac unit!

**CALL** VAA9217-KSPBK

### 75000-2014A VACUUM MOUNTING KIT

J.E. ADAMS

- For use with 9217/9218/9237 series vacs on 75000 series poles

**CALL** VBA75000-2014A

### COIN & BILL OPERATED 9218-DH SERIES

J.E. ADAMS

- Can be converted into single inlet with included coverplate

<b>VAA9218-DH</b>	Vac, Dual Inlet, SS Dome, Coin & Bill Operated
<b>VAA9218LD-DH</b>	Vac, Dual Inlet, Lighted Dome, Coin & Bill Operated

### FREE PUSH BUTTON SERIES (9237-DH SERIES)

J.E. ADAMS

<b>VAA9237-DH</b>	Vac, Dual Inlet, SS Dome, Free Push Button
<b>VAA9237LD-DH</b>	Vac, Dual Inlet, Lighted Dome, Free Push Button

### COIN OPERATED SERIES (9217-DH SERIES)

J.E. ADAMS

- Can be converted into single inlet with included coverplate

<b>VAA9217-DH</b>	Vac, Dual Inlet, SS Dome, Coin Operated
<b>VAA9217LD-DH</b>	Vac, Dual Inlet, Lighted Dome, Coin Operated



### MOUNTED VACS FOR 35000 SERIES STANCHIONS

J.E. ADAMS



- **FREE PUSH BUTTON SPECIFICATIONS (9237):**
- (3) 1.6 HP, 120 volt motors - Requires 30 AMP service
- New lighted push-button start with timer
- Large stainless steel dome
- Double service doors offer easy access to clean-out area and 4 filter bag system
- **COIN OPERATED SPECIFICATIONS (9217):**
- (3) 1.6 HP, 120 volt motors - Requires 30 AMP service
- Double service doors offer easy access to clean-out area and 4 filter bag system
- Imonex coin acceptor takes quarters
- Coin box holds 940 quarters or \$235.00
- Coin box and faceplate secured with pin lock system
- 8712-JEA Proprietary Timer

# VACUUMS & ACCESSORIES

## J.E. ADAMS VACS & VAC COMBO UNITS



TOP SELLER!

### ULTRA TURBO-NATOR® VACUUM

J.E. ADAMS



- **ALL ULTRA TURBO-NATOR VACUUMS REQUIRE 30 AMP SERVICE**
- Large Dixmor Digital Display Timer - highly visible and easy to read, scrolls messages, calculates time between functions, recalculates remaining time when switched during any function, and has a built-in coin counter
- Talos or Coinco Bill Acceptor and Imonex electronic coin acceptor
- Are available in a variety of dome and hose colors
- Many options and packages are available. Including free decal packages!
- 2 motor vacuum/3 motor turbo vacuum
- Lighted push buttons
- Medeco locks
- Lighted domes available
- Visual/audible last coin alert
- Weight: 250 lbs.
- **PLEASE REFER TO PART NUMBERS FOR SPECIFIC DETAILS ON EACH MODEL.**

<b>CALL</b>	<b>VAA29025</b>	WITH bill acceptor
	<b>VAA29026</b>	WITH bill acceptor, Vault ready
	<b>VAA29027</b>	WITHOUT bill acceptor

**ULTRA TURBO  
POWERED VACUUM**

**DECAL ONLY AVAILABLE IN BLACK**



### ULTRA 29070 SERIES COMBINATION VACUUMS

J.E. ADAMS



- Large Dixmor digital display timer is highly visible and easy to read, scrolls messages, calculates time between functions, recalculates remaining time when switched during any function, and has a built-in coin counter
- Imonex electronic coin acceptor takes U.S. \$1.00 coins, U.S. quarters, 1.073 and 0.984 tokens
- 6 lighted push buttons for the following functions: 2 motor vacuum, 3 motor turbo vacuum, shampoo/spot remover setting, and 3 fragrance selections
- Peninsula lighted dome available in red (standard), blue, yellow, and dark green
- Digital display can be easily programmed with remote control which is available at a nominal charge
- Hose: Black, 2" x 15', swivel cuff and nozzle included
- 2" x 15' hose available in red, blue, yellow, or green at no additional charge.
- Cut-resistant 1/4" x 25' wire braid air hose with 90 PSI inline air gauge
- Optional accessories available at an additional charge: electronic coin acceptors, quiet motors, vinyl clean-out bag, or rubber clean-out container, clean-out door lock kit
- 3 Motors with 2" hose = 210 Max CFM / 708 Peak Air Watts
- 3 Motors with 1 1/2" hose = 165.9 Max CFM / 708 Peak Air Watts
- (3) 1.6 HP, 120 volt motors
- GAST 3/4 HP air compressor
- Requires 30 AMP service
- Talos • bill acceptor takes \$1.00 and \$5.00 bills
- Visual and audible last coin alarm
- Comes with 7 Medeco plug locks
- Coin box holds 650 coins or \$165.00
- Includes a 3/8 Allen wrench for unlocking doors

<b>CALL</b>	<b>VAA29070</b>	WITH Bill Acceptor & Coin Acceptor
	<b>VAA29071</b>	Vault Ready, WITH Bill Acceptor & Coin Acceptor
	<b>VAA29072</b>	WITH Coin Acceptor
	<b>VAA29073</b>	Vault Ready, WITH Coin Acceptor

**ULTRA 29070 SERIES  
VACUUMS ARE ETL & CETL  
APPROVED**

## THE MOST OPTIONS AVAILABLE IN THE INDUSTRY

Whether you are looking for a revenue generator or to stop replacing cheaper shop vacuums we've got options for you. J.E. Adams commercial vacuums (no-pay units) are great for car dealerships, rental car agencies, auto body shops, or as an option to give your customer base free vacuums at your wash. Revenue-generating models give you the options to use bills, quarters, or tokens.

# VACUUMS & ACCESSORIES

## J.E. ADAMS VACS & VAC COMBO UNITS



### ULTRA TURBO-NATOR® HOT AIR DRYER COMBINATION VACUUM

J.E. ADAMS



- Turbo Towel is the first and only dryer on the market with heated air
- Use Turbo Towel to quickly dry off the exterior of your car, blast water out of cracks and crevices, and dry floor mats and carpets in a matter of minutes
- Nozzle velocity exceeds 200+ miles per hour
- Prevent scratches and marks caused by standard hand towel and chamois drying
- Talos bill acceptor takes \$1.00 and \$5.00 bills
- Imonex electronic coin acceptor takes U.S. \$1.00 coins, U.S. quarters, 1.073 and 0.984 tokens
- Comes with 7 Medeco locks (3 for the control doors, 1 for an internal bill acceptor locking box, 1 for an internal coin acceptor locking box) and 2 for turbo towel compartment
- Standard peninsula dome available in red, blue, yellow, and dark green
- Double service doors offer easy access to clean out compartment and 4 filter bag system
- Digital display can be easily programmed with optional remote control
- 3 lighted push buttons for the following functions: 2 motor vacuum, 3 motor turbo vacuum, and hot air dryer
- Includes a 2" x 30' high temperature hose for Turbo Towel and a 2" x 15" hose for the vacuum
- Large digital display timer is highly visible and easy to read, scrolls messages, calculates time between functions, recalculates remaining time when switched during any function, visual and audible last coin alarm, and has a built-in coin counter

TURBO TOWEL & ULTRA SERIES	
CALL	VAA29050 WITH bill validator
	VAA29050VR WITH bill validator, vault ready
	VAA29051 WITHOUT bill validator
	VAA29051VR WITHOUT bill validator, vault ready

**ULTRA TURBO POWERED VACUUM**

TURBO TOWEL SUPER VACUUM	
CALL	VAA9215LDV WITH bill validator
	VAA9215LD WITHOUT bill validator
	VAA9215LD-VR WITHOUT bill validator, vault ready



### ULTRA TURBO-NATOR® TIRE SHINE COMBINATION VACUUM

J.E. ADAMS



- Comes with 1 gallon of Tire Shine formula. Dispenses 3/4 oz. in 30 seconds which is equal to 1.5 oz. of liquid formula. 1 gallon yields 85 minutes of vend time
- Large digital display timer is highly visible and easy to read, scrolls messages, calculates time between functions, recalculates remaining time when switched during any function, visual and audible last coin alarm, and has a built-in coin counter
- Comes with 7 Medeco Plug locks (3 for the control door, 1 for an internal bill acceptor locking box, 1 for an internal coin acceptor locking box, and 2 for tire shine formula compartment)
- Talos bill acceptor takes \$1.00 and \$5.00 bills
- Imonex electronic coin acceptor takes U.S. \$1.00 coins, U.S. quarters, 1.073 and 0.984 tokens
- Standard peninsula lighted dome available in red, blue, yellow, and dark green
- Round lighted dome available in red, blue, yellow, dark green, and white
- Double service doors offer easy access to clean out compartment and 4 filter bag system
- Hose: 2" x 15', swivel cuff and nozzle included (15', 25', and 50' available in 1 1/2" or 2")
- Optional coin mechs, motors, colored hoses, extra security, and clean-out containers are available
- Weight: 260 lbs

CALL	VAA29035 WITH bill acceptor
	VAA29036 WITH bill acceptor, vault ready
	VAA29037 WITHOUT bill acceptor

# VACUUMS & ACCESSORIES

## J.E. ADAMS VACS & VAC COMBO UNITS



### ULTRA TURBO-NATOR® SHAMPOO & SPOT REMOVER COMBO VACUUM

J.E. ADAMS

- 2 motors/ 3 motor turbo vacuum
- Shampoo & spot remover
- 260 lbs.

<b>CALL</b>	<b>VAA29000</b>	WITHOUT bill acceptor
	<b>VAA29001</b>	WITH bill acceptor - vault ready
	<b>VAA29002</b>	WITHOUT bill acceptor
	<b>VAA29003</b>	WITHOUT bill acceptor - vault ready

### ULTRA TURBO-NATOR® FRAGRANCE COMBO VACUUM

J.E. ADAMS

- 2 motors/ 3 motor turbo vacuum
- Dispenses 3 different fragrances
- 260 lbs.

<b>CALL</b>	<b>VAA29015</b>	WITHOUT bill acceptor
	<b>VAA29016</b>	WITH bill acceptor - vault ready
	<b>VAA29017</b>	WITHOUT bill acceptor
	<b>VAA29018</b>	WITHOUT bill acceptor - vault ready

### ULTRA TURBO-NATOR® FRAGRANCE & SHAMPOO/SPOT REMOVER COMBO VAC

J.E. ADAMS

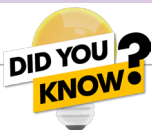
- 2 motors/ 3 motor turbo vacuum
- Fragrance & shampoo spot remover
- 298 lbs.

<b>CALL</b>	<b>VAA29060</b>	WITHOUT bill acceptor
	<b>VAA29061</b>	WITH bill acceptor - vault ready
	<b>VAA29062</b>	WITHOUT bill acceptor
	<b>VAA29063</b>	WITHOUT bill acceptor - vault ready

Non-Returnable

Non-Returnable

Non-Returnable



## J.E. ADAMS HAS THE WIDEST VARIETY OF COMBINATION UNITS IN THE MARKETPLACE.

Have multiple profit centers in one unit with the ability to charge different fees for different services. By having multiple services on one unit you save on space and our lighted domes and electronics will give your site a fresh look.

- Reliability, style, visual appeal
- Options your customers want

# VACUUMS & ACCESSORIES

## J.E. ADAMS SUPER VAC UNITS



VAA9200



VAULT READY VAA9200VR

### SUPER VAC

J.E. ADAMS



#### FEATURES:

- 110 volt standard, 220 volt optional
- Secure coin box with pin lock
- Available with 2 motors
- 4 quick change filter bags
- Small stainless steel dome
- Takes quarters
- Easy installation
- 2-door canister
- **OPTIONS:** 8104 security kit for service doors, 8202W coin box security cover, 8206 lock bar, 9427K dual service door security cover, 6024 Abus lock, 8599 clean-out bag

#### SPECIFICATIONS:

- Input: 20 AMP, 120 VAC, 60 HZ
- Size: 19" diameter canister, 54½" H
- Shipping weight: 140 lbs
- Capacity: 2½ cubic feet
- Airflow: 2 motors with 2" hose, 163.5 CFM/193.4 Air Watts | 2 motors with 1½" hose, 140.8 CFM/402.4 Air Watts
- Optional 6-piece vinyl decal package. Yellow, blue or violet
- Optional colored hoses include red, blue, yellow, or green (black comes standard)

CALL	VAA9200	Standard
	VAA9200VR*	Vault Ready

**BEST VALUE WORK HORSE VAC OFFERS CONVENIENCE & EASY MAINTENANCE**

\*ADA height box available upon request for vault ready vacuums



VAA9210

STAINLESS STEEL DOME



LIGHTED DOME

VAULT READY

VAA9210LDVR

### SUPER VAC - 2 MOTOR

J.E. ADAMS



• LIGHTED OR STAINLESS STEEL DOME AVAILABLE! • DELUXE DECAL PACKAGE NOT INCLUDED

#### STANDARD FEATURES:

- Two service doors
- Two 1.6 HP 120 volt motors
- Optional 8104 security kit for service doors, 8202W coin box security cover, 8206 lock bar, 9427K dual service door security cover, 6024 Abus lock, 8599 clean-out bag
- Mechanical coin acceptor takes quarters
- Optional 6-piece vinyl decal package in yellow, blue or violet
- Hose color options: red, blue, yellow, or green (black comes standard)
- Four quick-change filter bags
- Large stainless steel dome

CALL	VAA9210	2 Motors	Large Stainless Steel Dome
	VAA9210LD	2 Motors	Lighted Dome
	VAA9210LDVR*	2 Motors	Vault Ready - Lighted Dome

\*ADA height box available upon request for vault ready vacuums



LIGHTED DOME

VAA9213LD

STAINLESS STEEL DOME

VAULT READY

VAA9213VR



### SUPER VAC - 3 MOTOR

J.E. ADAMS



• LIGHTED OR STAINLESS STEEL DOME AVAILABLE!

#### STANDARD FEATURES:

- Two service doors
- Three 1.6 HP 120 volt motors
- 210 CFM Max
- Lighted dome available in dark green, yellow, white, blue & red
- Hose color options: in red, blue, yellow, or green
- Optional 8104 security kit for service doors, 8202W coin box security cover, 8206 lock bar, 9427K dual service door security cover, 6024 Abus lock, 8599 clean-out bag
- Optional 6-piece vinyl decal package in yellow, blue or violet
- Four Quick Change filter bags
- Mechanical coin acceptor takes quarters

CALL	VAA9213VR*	3 Motors	Vault Ready - Stainless Steel Dome
	VAA9213	3 Motors	Stainless Steel Dome
	VAA9213LD-VR*	3 Motors	Vault Ready - Lighted Dome

\*ADA height box available upon request for vault ready vacuums

# VACUUMS & ACCESSORIES

## J.E. ADAMS SUPER VACUUMS AND COMBO MACHINES



### SUPER VAC WITH BILL ACCEPTOR

J.E. ADAMS

• **LIGHTED OR STAINLESS STEEL DOME AVAILABLE!**

**STANDARD FEATURES:**

- Optional 8104 security kit for service doors, 8202W coin box security cover, 8206 lock bar, 9427K dual service door security cover (shown), 6024 Abus lock, 8599 clean out bag
- Optional 6-piece vinyl decal package available in 11 series yellow, 12 series blue, 13 series violet
- Dome color options: Dark green, yellow, white, blue, and red
- Secure coin box with pin lock
- Hose color options: Red, blue, yellow, or green (black comes standard)
- Talos \$1 & \$5 bill acceptor
- 2 door canisters, takes quarters
- 1.6 HP, 120 volt motors
- 4 quick-change filter bags

<b>CALL</b>	<b>VAA9209-6</b>	3 Motors	Large Stainless Steel Dome
	<b>VAA9209</b>	2 Motors	Small Stainless Steel Dome
	<b>VAA9209LD</b>	2 Motors	Lighted Dome
	<b>VAA9209-6LD</b>	3 Motors	Lighted Dome



### SUPER VAC WITH LIGHTED DISPLAY TIMER & BILL ACCEPTOR

J.E. ADAMS



• **LIGHTED OR STAINLESS STEEL DOME AVAILABLE!**

**STANDARD FEATURES:**

- Stainless steel or colored lighted dome available in dark green, red, yellow, blue, red, or white
- Optional 8104 security kit for service doors, 8202W coinbox security cover (shown), 8206 lock bar (shown), 9427K dual service door security cover (shown), 6024 Abus lock (shown), 8599 clean-out bag.
- Optional 6-piece vinyl decal package: Yellow, blue, violet
- Hose color options: Red, blue, yellow, or green (black comes standard)
- Talos \$1 & \$5 Bill Acceptor
- Dixmor Digital Display
- Last coin lamp & alarm
- Imonex Coin acceptor
- 2-door canister
- 4 quick-change filter bags
- 1.6 HP 120 volt motors
- Secure coin box w/pin lock

<b>CALL</b>	<b>VAA9200-1LD</b>	2 Motors	Lighted Dome
	<b>VAA9200-1</b>		Small Stainless Steel Dome
	<b>VAA9200-3</b>	3 Motors	Large Stainless Steel Dome
	<b>VAA9200-3LD</b>		Lighted Dome



**DIGITAL**

### VAC/AIR COMBO

J.E. ADAMS



**STANDARD FEATURES:**

- (2) 1.6 HP, 120 volt motors
- Requires (1) 20 AMP services

**CHOOSE:**

- 2 motors with 2" hose=163.5 CFM /532.5 Peak Air Watts
- 2 motors with 1.5" hose=140.8 CFM /532.5 Peak Air Watts
- 3/4 HP oil-less GAST air compressor, 18-month warranty
- Comes with 4 Medeco locks (3 for the control door, 1 for an internal coin acceptor locking box - digital models only)
- (2) service doors, 4-quick-change filter bags
- Hose: 2" x 15', swivel cuff and nozzle included
- Pin locks on standard units
- Imonex coin mechanisms takes quarters only
- Pressure range 4-70 psi (accuracy +/- .5 PSI)
- 25' air hose with 90 PSI air gauge
- Temperature safe from -20 °F to 158 °F
- Built-in unit heater(digital model only)
- Electronic pressure relief valve (digital model only)
- Automatic compressor shut off

**DIGITAL FEATURES:**

- Inflate and deflate tires with the push of a button
- Easy to read LCD backlit display shows price for service and amount of remaining money needed
- Set desired tire pressure with (+) and (-) touch buttons

<b>CALL</b>	<b>VAA9420-1GDIGP</b>	Digital Air & Vac Gast Compressor
	<b>VAA9420-1DIGPV</b>	Digital Air & Vac with Bill Acceptor
	<b>VAA9420G</b>	Vac & Air, Gast compressor

**MUST CHOOSE DOME COLOR WHEN ORDERING**



### VAC/AIR COMBO

J.E. ADAMS



**STANDARD FEATURES:**

- (2) 110 volt non-accumulating timers
- Two service doors
- Four quick-change filter bags
- Two 1.6 HP 120 volt motors
- Side-mounted retractable air hose reel
- 25' air hose with 90 PSI air gauge
- 2 mechanical coin acceptors take quarters
- Optional 8104 security kit for service doors, 8202W coin box security cover, 8206 lock bar, 9427K dual service door security cover, 6024 Abus lock, 8599 clean-out bag
- Hose color options: Red, blue, yellow, green (black comes standard)
- Requires 2 electrical services

**CALL VAA9420H**

**RETRACTABLE HOSE REEL BASE**



**NON-DIGITAL**

# VACUUMS & ACCESSORIES

## J.E. ADAMS SUPER VACUUMS AND COMBO MACHINES



LIGHTED DOME

### DUAL VAC WITH LIGHTED DOME

J.E. ADAMS

#### STANDARD FEATURES:

- Central service & control compartments are common to both vacs, making installation/service easy
- Redesigned large capacity coin box secured with an Abus lock (6024), & holds over \$417 in quarters
- 4 service doors for easy maintenance
- 2-in-1, save island space & maximize profits!
- 4 quick change filter bags
- Optional bill acceptor on one side or both (shown)
- 4 - 1.6HP, 120 volt Ametek motors
- 1½" hoses available
- Dome color options: green, yellow, blue and red
- 2 plastic clean-out bins included
- Hose color options: Red, blue, yellow, or green (black comes standard)

DESIGNED FOR MAXIMUM SECURITY

CALL	VAA8960	4 Motors	Lighted Dome
	VAA8960C		Commercial - Lighted Dome
	VAA8970		Vault Ready - Lighted Dome

### VAC/SHAMPOO COMBO

J.E. ADAMS

#### STANDARD FEATURES:

- Imonex electronic coin acceptor takes U.S. \$1.00 coins, U.S. quarters, 1.073 & 0.984 tokens
- Displays messages, prices for service, counts down time and recalculates time if toggled mid cycle
- Toggle switch on faceplate selects vac or shampoo/spot remover
- Rocker switch on brush to select shampoo/spot remover
- Four Quick Change filter bags
- Two 1.6 HP 110 volt motors
- Twin cam lock for faceplate & shampoo box
- Last coin lamp & alarm
- Pin lock style coin box, & coin box security cover with lock bar (optional)
- Lighted dome: dark green, yellow, white, blue & red
- Hose color: Red, blue, or yellow, (black is standard)
- Optional security kit for service door (8104), coin box security cover (8202W), lock bar (8206), Abus lock (6024), clean-out bag (8599), 9427K dual service door security cover
- 1 oz. of shampoo/remover makes 2.5 gal. of foam

SHOWN WITH OPTIONAL BLUE DOME, HOSE, 8202W, 8206, & 6024 COIN BOX SECURITY PACKAGE

CALL	VAA9500BA	WITH Talos Bill Acceptor
	VAA9500	WITHOUT Bill Acceptor

### VAC SCENTSATIONS WITH BILL ACCEPTOR

J.E. ADAMS

#### STANDARD FEATURES:

- Talos \$1 & \$5 Bill Acceptor
- Two 1.6HP 110 volt motors
- 4 filter bags
- Twin cam locks for faceplate
- Pin lock coin box
- Choice of 3 fragrances
- Toggle switch between vac & fragrance
- Last coin lamp & alarm

- Lighted dome available in dark green, yellow, white, blue & red
- Imonex electronic coin acceptor takes U.S. \$1.00 coins, U.S. quarters, 1.073 and 0.984 tokens
- Timers with digital display scroll messages, prices for service - counts down time and recalculates time if toggled mid cycle
- Hose color options: Red (shown), blue, yellow, or green (black comes standard)
- Optional security kit for service door (8104), coin box security cover (8202W), lock bar (8206), Abus lock (6024), clean-out bag (8599), 9427K dual service door security cover

CALL	VAA8900BA	WITH Bill Acceptor
	VAA8900	WITHOUT Bill Acceptor



VAA9225



VAA9235-3DH

THESE COMMERCIAL VACUUMS DO NOT COME WITH A COINBOX

### COMMERCIAL VACUUMS

J.E. ADAMS



- LIGHTED OR STAINLESS STEEL DOME AVAILABLE!

#### STANDARD FEATURES:

- Additional optional timers, motors, colored hoses, clean-out bag
- 4 Quick Change filter bags
- On/off toggle switch
- 1.6 HP 120 volt motors
- Optional push button on/off timer
- Two service doors
- Lighted dome available

CALL	VAA9235	2 Motors	Large Stainless Steel Dome
	VAA9235-3	3 Motors	Large Stainless Steel Dome
	VAA9235-3DH	3 Motors	2 Hoses - Stainless Steel Dome
	VAA9225	2 Motors	Small Stainless Steel Dome



### SINGLE MOTOR MINI VAC

J.E. ADAMS



Push-button model is ideal for lighter duty applications

#### STANDARD FEATURES:

- Single 120V motor with 2" hose
- Drop bottom clean out for hands free cleaning
- Single service door with single pleated cartridge filter
- Wall mount or post mount
- Coin-operated (9299) and free model (9299C) available
- Imonex coin acceptor takes quarters (8149)
- 110 volt accumulating timer (8712SS4)
- Coin box holds 630 quarters or \$158
- Standard 2" x 15' hose with swivel cuff and claw nozzle included
- 129.8 CFM max, 633 air Watts
- 132" of water lift

CALL	VAA9299	Coin Operated
	VAA9299C	Push Button

SHOWN WITH OPTIONAL RED DOME, HOSE, 8202W, 8206, & 6024 COIN BOX SECURITY PACKAGE

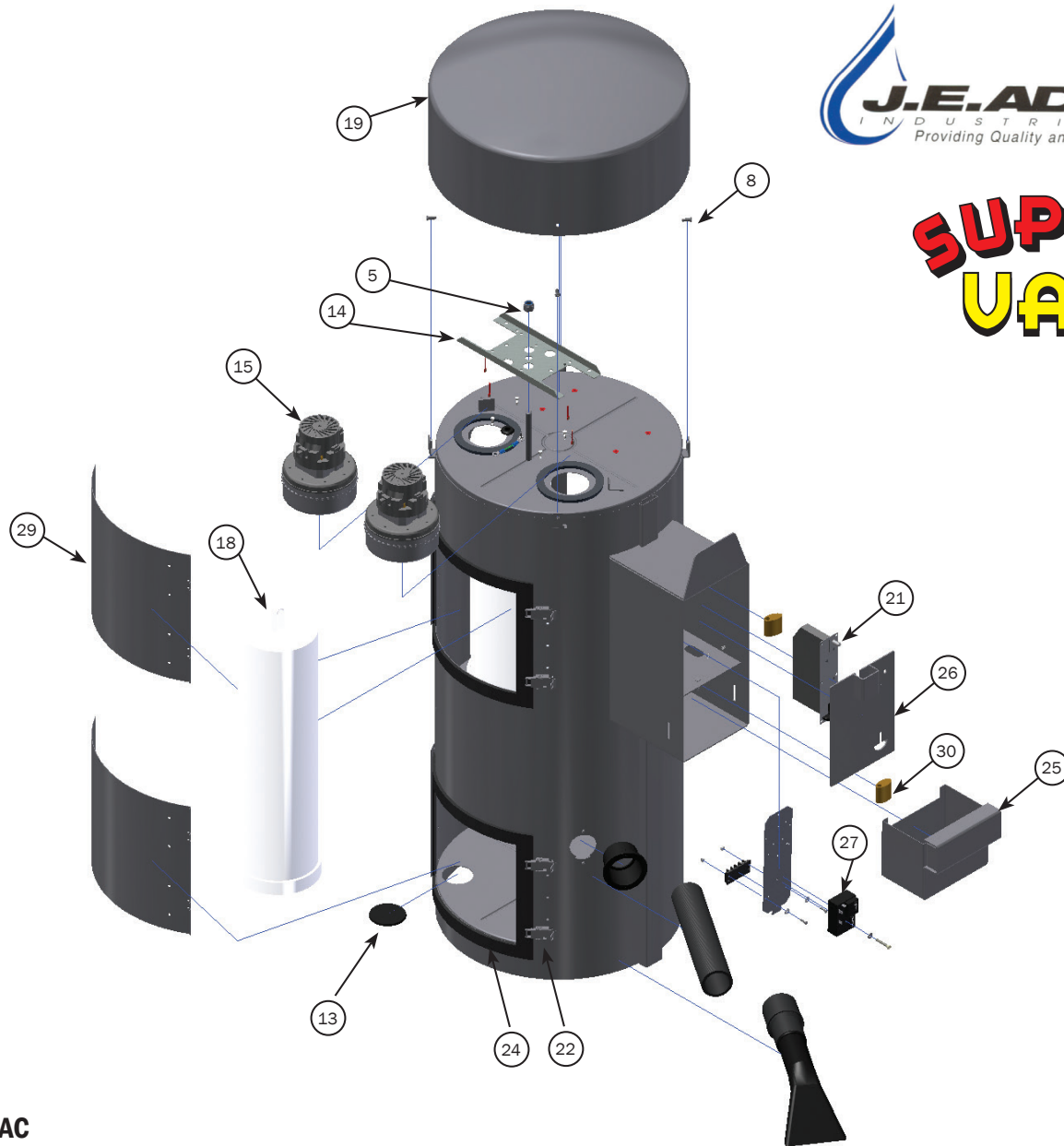


# VACUUMS & ACCESSORIES

J.E. ADAMS VACUUMS



## SUPER VAC



### 9200 SUPER VAC

J.E. ADAMS

• PLEASE NOTE THAT PART NUMBERS MARKED WITH A "\*" AND "SPECIAL/CALL" ARE SPECIAL ORDER ITEMS. PLEASE GIVE US A CALL TO DISCUSS PRICING AND SHIPPING TIMES.

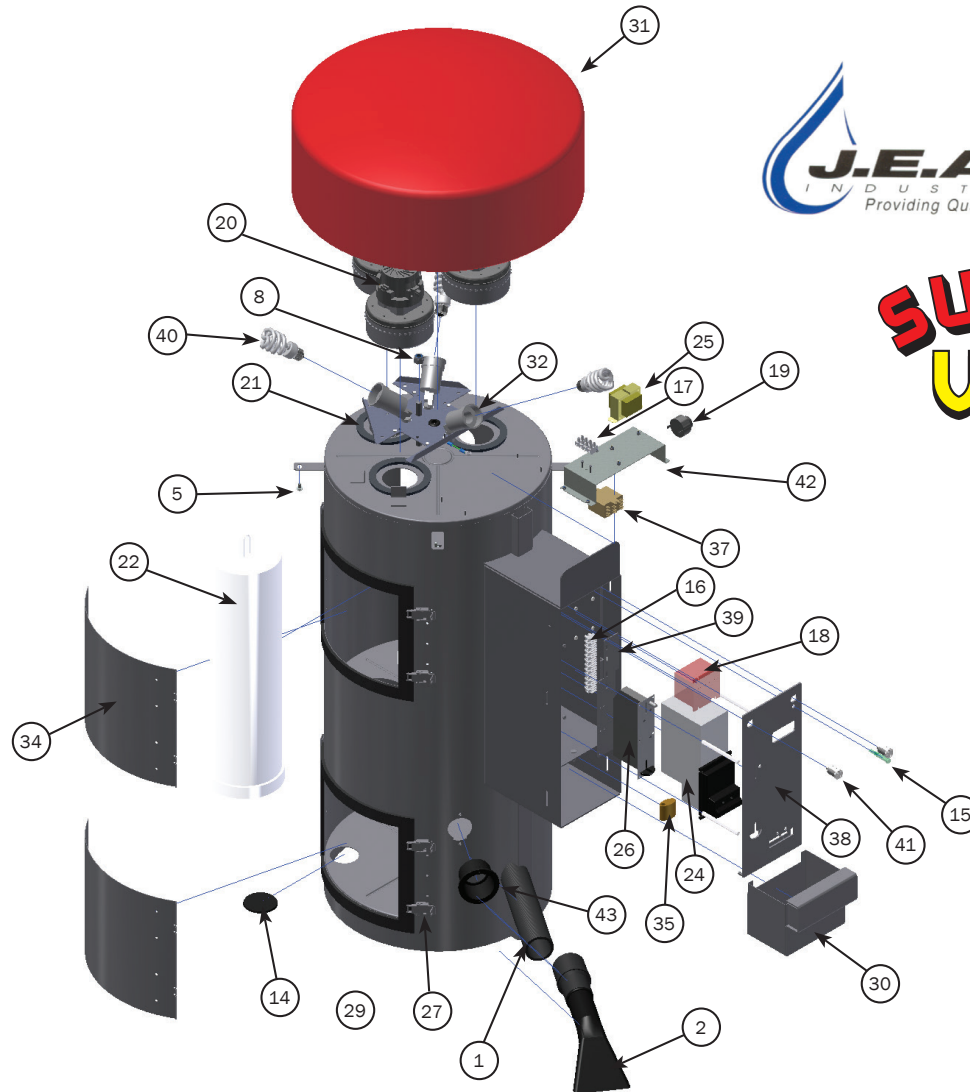
1	<b>VAK45BK</b>	2" x 15' Black Vac Hose (Other Colors Available)	<b>\$28.57</b>	17	<b>VA40020</b>	Kleen-Rite Vac Motor Gasket	<b>\$1.14</b>
2	<b>VAB-20B</b>	2" Black Vac Nozzle (Other Colors Available)	<b>\$2.15</b>	18	<b>VAA8074</b>	Filter Bag for 9200 Vac	<b>\$18.63</b>
3	<b>5600D4*</b>	3/8-16 x 1.5 HHCS	<b>CALL</b>	19	<b>VA40015</b>	20" Stainless Steel Vac Dome	<b>\$258.75</b>
4	<b>D5603D1*</b>	10 Standard NC Nylock Nut		20	<b>8108*</b>	#10 x 1/2" Tap Screw	<b>CALL</b>
5	<b>5603D11*</b>	1/2 Standard NC Nylock Nut		21	<b>IMZ3Q</b>	2" Imonex Coin Mech - U.S. Quarters	<b>\$52.77</b>
6	<b>5606D22*</b>	Washer, 3/8 Fender		22	<b>VA40028</b>	Kleen-Rite Vac Door - Clasp/Hinge ONLY	<b>\$6.98</b>
7	<b>5606D7*</b>	Flat Washer, .160 ID x .500 OD	<b>CALL</b>	23	<b>VAA8157</b>	Nut for Door Latch	<b>\$0.20</b>
8	<b>VA40017</b>	Stainless Steel Allen Screw for Dome		24	<b>VA8159</b>	Door Gasket	<b>\$4.52</b>
9	<b>5627D2*</b>	Pan Head, Slotted, 6-32 x 5/8		25	<b>CBA8204</b>	Money Box - Pin Lock Style	<b>\$95.16</b>
10	<b>VAA5629D2</b>	#8 x 1/2" Self Tapping Screw		26	<b>CBA8211</b>	Face Plate - Pinlock	<b>\$66.67</b>
11	<b>VAA5639D6</b>	Rubber Grommet		27	<b>TISSAC-ABKT</b>	SSAC Timer with Mounting Plate	<b>\$123.96</b>
12	<b>5871B9*</b>	Plastic Vac Lid Plug		28	<b>8605*</b>	Pallet, Vac, 26" x 30.5"	<b>CALL</b>
13	<b>VAA5871B8</b>	Plastic Plug Screw Cover		29	<b>VAA8615-5W</b>	Clean-Out Door with Hinges	<b>\$77.53</b>
14	<b>VAA8051</b>	H Bracket Adams Vac Motor Hold		30	<b>LOA250</b>	Adams Pin Lock With Pin	<b>\$23.43</b>
15	<b>VMK19</b>	Kleen-Rite Vac Motor		31	<b>8673-11*</b>	Ground Wire 28"	<b>CALL</b>
16	<b>8055LEAD-EM*</b>	Wire Lead, EM Vac Motor		32	<b>9201W*</b>	Can W/C 2DRVAC Econo/Pin	
			33	<b>B5722-002*</b>	Nut, 3/8-16 UNC Hex Lock Nut		

# VACUUMS & ACCESSORIES

## J.E. ADAMS VACUUMS



# SUPER VAC



### 9200-3LD SUPER VAC

J.E. ADAMS

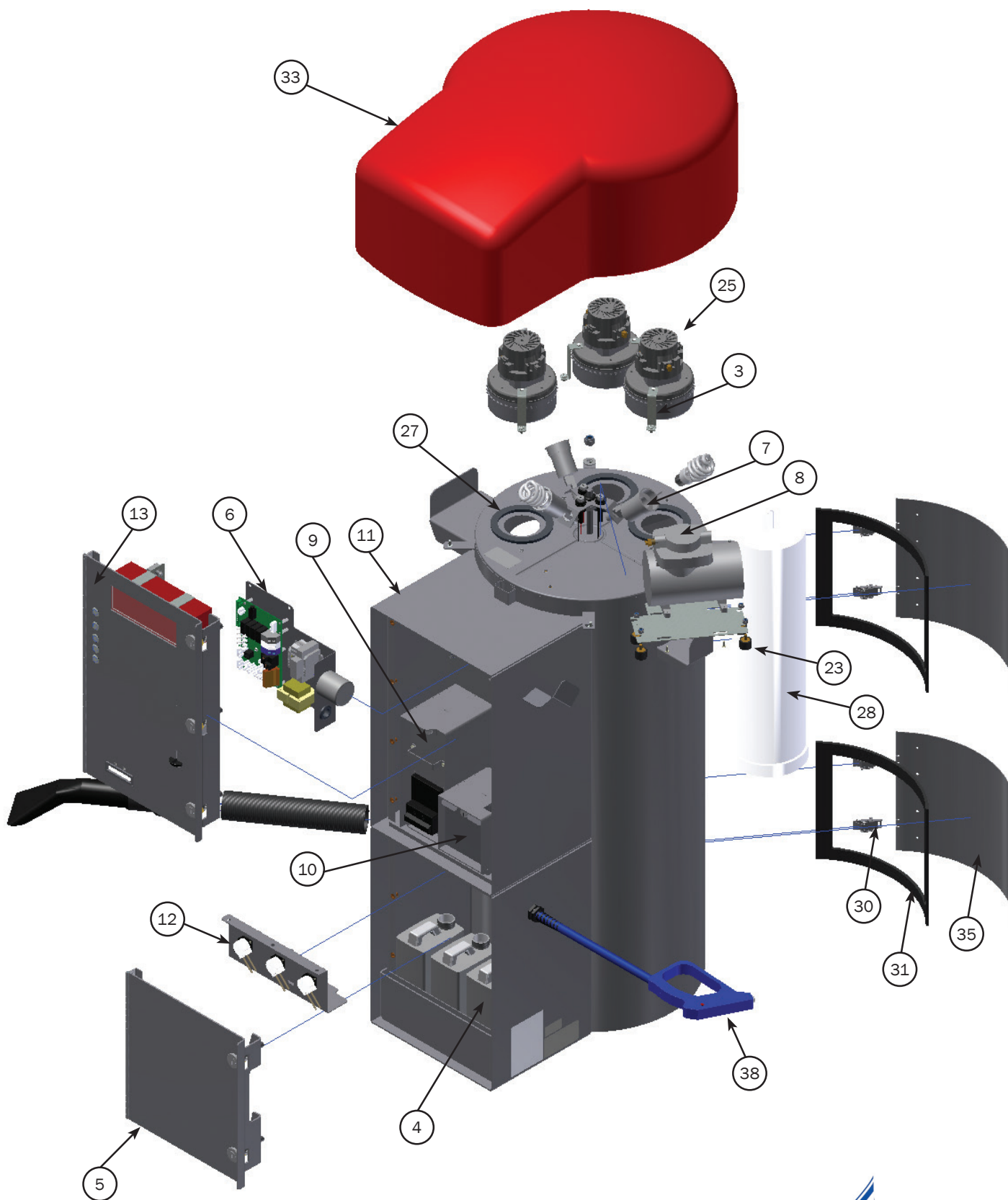
• PLEASE NOTE THAT PART NUMBERS MARKED WITH A "\*" AND "SPECIAL/CALL" ARE SPECIAL ORDER ITEMS. PLEASE GIVE US A CALL TO DISCUSS PRICING AND SHIPPING TIMES.

1	<b>VAK45BK</b>	2" x 15' Black Vac Hose (Other Colors Available)	<b>\$28.57</b>
2	<b>VAB-20B</b>	2" Black Vac Nozzle (Other Colors Available)	<b>\$2.15</b>
3	<b>VAA5000D5*</b>	Stand Off	<b>CALL</b>
4	<b>5600D4*</b>	3/8-16 x 1.5 HHCS	
5	<b>5601D13*</b>	SCR, 1/4-20 x 1/2 PPHSq ConeStepZP	
6	<b>D5603D1*</b>	10 Std NC Nylock Nut	
7	<b>VAA5603D10*</b>	6 Std NC Nylock Nut	
8	<b>5603D11*</b>	1/2 Std NC Nylock Nut	
9	<b>5606D22*</b>	Washer, 3/8" Fender	
10	<b>5606D7*</b>	Flat Washer, .160 ID x .500 OD	
11	<b>5627D1*</b>	Pan Head, Slotted, 6-32 x 1	
12	<b>5627D2*</b>	Pan Head, Slotted, 6-32 x 5/8	
13	<b>VAA5662D2</b>	6-32 x 1/2 Phillips Pan Machine Screw	<b>\$0.16</b>
14	<b>VAA5871B8</b>	Plug, Vac Bottom 2 1/2"	<b>\$1.75</b>
15	<b>VAA5913D8</b>	Lamp, Panel Mount, 3/8, 12V, LED Grn	<b>\$7.84</b>
16	<b>VAA5944D001</b>	Terminal Strip, 12 Poles, 8 Amp Max	<b>\$16.43</b>
17	<b>VAA5944D004</b>	Terminal Strip, C-60 Series, 4 Pole	<b>\$6.54</b>
18	<b>CB0316</b>	Dixmor Display Timer	<b>\$262.87</b>
19	<b>CB0319</b>	Alarm, Last Coin Alert	<b>\$10.27</b>
20	<b>VMK19</b>	Kleen-Rite Vac Motor	<b>\$38.10</b>
21	<b>VA40020</b>	Motor Gasket	<b>\$1.14</b>
22	<b>VAA8074</b>	Filter Bag for 9200 Vac	<b>\$16.87</b>

23	<b>8108*</b>	#10 x 1/2 Tap Screw	<b>CALL</b>
24	<b>T6T1-U5E</b>	CPI Talos 110V Validator	<b>\$478.20</b>
25	<b>VAA8131-2</b>	Transformer	<b>\$35.51</b>
26	<b>IMZ3Q</b>	2" Imonex Coin Mech - US Quarters	<b>\$52.77</b>
27	<b>VA40028</b>	Vac Door Clasp/Hinge Only	<b>\$6.98</b>
28	<b>VAA8157</b>	Nut for Door Latch	<b>\$0.20</b>
29	<b>VA8159</b>	Vac Door Gasket	<b>\$4.52</b>
30	<b>CBA8204</b>	Money Box - Pin Lock Style	<b>\$95.16</b>
31	<b>VAA8306</b>	Plastic Vac Dome - Specify Color	<b>\$117.25</b>
32	<b>8543K-3*</b>	3 Motor Light Kit	<b>CALL</b>
33	<b>8605*</b>	Pallet, Vac, 26" x 30.5"	
34	<b>VAA8615-5W</b>	Clean Out Door with Hinges	<b>\$77.53</b>
35	<b>LOA250</b>	Adams Pin Lock with Pin	<b>\$23.43</b>
36	<b>8673-11*</b>	Ground Wire 28"	<b>CALL</b>
37	<b>VAA876124</b>	Relay, 3PDT, 24V AC, 30 Amp	<b>\$69.01</b>
38	<b>VAA89007VW</b>	Face Plate	<b>\$83.08</b>
39	<b>VAA890082</b>	Terminal Bracket, Vac-Scent	<b>\$18.62</b>
40	<b>VAA5911D1</b>	Fluorescent Bulb	<b>\$6.30</b>
41	<b>LOA8953</b>	Medeco Cam Lock with 2 Keys	<b>\$53.64</b>
42	<b>VAA9200-10</b>	Bracket, 9200 with Validator	<b>\$9.69</b>
43	<b>9201W6*</b>	Canister Weldment, Bill Acceptor, 3M	<b>CALL</b>
44	<b>B5722-002*</b>	Nut, 3/8-16 UNC Hex Lock Nut	

# VACUUMS & ACCESSORIES

J.E. ADAMS VACUUMS



**29015 ULTRA SERIES VACUUM/FRAGRANCE**  
J.E. ADAMS



# VACUUMS & ACCESSORIES

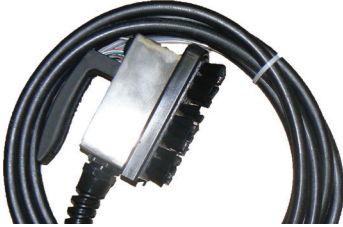
J.E. ADAMS PARTS & ACCESSORIES



## 29015 ULTRA SERIES VACUUM/FRAGRANCE

J.E. ADAMS

• PLEASE NOTE THAT PART NUMBERS MARKED WITH A "\*" AND "SPECIAL/CALL" ARE SPECIAL ORDER ITEMS. PLEASE GIVE US A CALL TO DISCUSS PRICING AND SHIPPING TIMES.



**BRUSH ASSEMBLY**  
VACUUM PARTS

**\$312.19** VEA11000-15



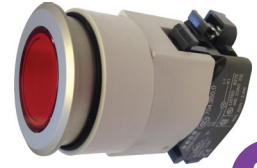
**GUN & HOSE ASSEMBLY**  
VACUUM PARTS

**\$234.99** VEA8898 (Before 2005)  
**\$247.50** VEA8898-1 (2005 and After)



**SILVER PUSH BUTTON**  
VACUUM PARTS

**\$89.81** VAA00CBD05



**RED PUSH BUTTON**  
VACUUM PARTS

**\$85.51** VAA2000072A

OLD STYLE



**AC PUSH BUTTON**  
VACUUM PARTS

**\$16.62** VAA8726



**PUSH BUTTON LIGHT**  
VACUUM PARTS

**\$1.88** VAA20000-74

OLD STYLE



**FUSE HOLDER**  
VACUUM PARTS

**\$4.42** VAA85997001



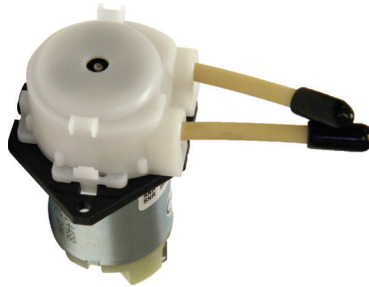
**10 AMP FUSE**  
VACUUM PARTS

**\$3.06** VAA85996010



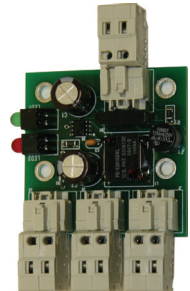
**1/2 GALLON JUG**  
VACUUM PARTS

**\$4.07** VAA28000-40



**PERISTALTIC PUMP**  
VACUUM PARTS

**\$111.41** VAA950043



**CIRCUIT BOARD**  
FOR PERISTALTIC PUMPS

**\$95.28** VAA5001

1	VAK45BK	2" x 15' Black Vac Hose (Other Colors Available)	<b>\$28.57</b>	22	5639D4*	Rubber Grommet	<b>CALL</b>
2	VAB-20B	2" Black Vac Nozzle (Other Colors Available)	<b>\$2.15</b>	23	VAA5639D9*	Isolation Mount, 30 DUR Neoprene, 1/4-20	<b>CALL</b>
3	VAA28000-36*	Motor Mount	<b>CALL</b>	24	VAA5871B8	Plastic Plug Screw Cover	<b>\$1.75</b>
4	VAA28000-40	1/2 Gallon Jug	<b>\$4.07</b>	25	VAL9414	Motor Ametek	<b>\$47.23</b>
5	29000-14A-1*	Door Assembly, Bottom, Plug Lock	<b>CALL</b>	26	VMK19	Kleen-Rite Vacuum Motor	<b>\$38.10</b>
6	29000-250A*	Control Panel Assembly W/ CB		27	VA40020	Kleen-Rite Vac Motor Gasket	<b>\$1.14</b>
7	VAA29000-30A*	Light Bracket Assembly		28	VAA8074	Filter Bag	<b>\$18.63</b>
8	29000-37A*	Compressor Assembly		29	8108*	#10 x 1/2 Tap Screw	<b>CALL</b>
9	29000-44A*	Bill Acceptor Assembly, Plug Lock		30	VA40028	Kleen-Rite Door Clasp/Hinge Only	<b>\$6.98</b>
10	29000-47A*	Coin Box Assembly, Plug Lock		31	VAB159	Vac Door Gasket	<b>\$4.52</b>
11	29015-1W-2*	Canister Weld Complete, Scent/Plug Locks		32	DEA8183	Warning Decal	<b>\$0.66</b>
12	29015-29A-2*	Thomas Pump Assembly		33	VAA8308R*	Peninsula Dome	<b>CALL</b>
13	VAA290157CBA-1*	Scent Vac Door Assembly, Coinbox/Plug Locks		34	8467D001*	ETL Decal, Vacuum	<b>CALL</b>
14	5600D4*	3/8-16 x 1.5 HHCS		35	VAA8615-5W	Clean Out Door with Hinges	<b>\$77.53</b>
15	VAA5601D13*	SCR, 1/4-20 x 1/2 PPHSqConeStepZP	36	8732*	Nameplate Serial Tag, UL	<b>CALL</b>	
16	5603D11*	1/2 Std NC Nylock Nut	37	8754*	Decal, Danger, Tri-Ling	<b>CALL</b>	
17	VAA5639D9*	1/4 Std NC Nylock Nut	38	VEA8898-1	Scent Gun Assembly with 15' Hose	<b>\$247.50</b>	
18	VAA5603D5	Nut for Plug	39	VAA5911D1	60W Bulb for Lighted Domes	<b>\$6.30</b>	
19	5606D10*	Washer, Flat 1/2 SAE	40	8939*	Pallet, Dual, Oval, Speciality, 30" x 40"	<b>CALL</b>	
20	5606D22*	Washer, 3/8" Fender	41	B5722-002*	Nut, 3/8-16 UNC Hex Lock Nut	<b>CALL</b>	
21	5611D4*	Nut, 5/16"-18 UNC KEPP-SS					

ALL PRICES ARE F.O.B. AND ARE SUBJECT TO CHANGE WITHOUT NOTICE • NO C.O.D.'S

1-800-233-3873 • (717) 684-6721 • FAX (800) 446-0495 • KLEENRITE.COM

# VACUUMS & ACCESSORIES

J.E. ADAMS PARTS & ACCESSORIES

## ULTRA SERIES VACUUM/FRAGRANCE

J.E. ADAMS



FOR SHAMPOO/  
SPOT  
REMOVER

### BRUSH HEAD DECAL

VACUUM PARTS

**\$2.31** DEA11000-15D



### CLEAN OUT BAG

VACUUM PARTS

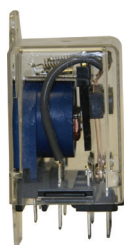
**\$44.83** VAA8599



### PLASTIC PLUG SCREW COVER

VACUUM PARTS

**\$1.75** VAA5871B8



OLD  
STYLE

### RELAY FOR 2 MOTOR VAC

VACUUM PARTS

**\$62.71** VAA8760



OLD  
STYLE

### RELAY FOR 3 MOTOR VAC

VACUUM PARTS

**\$95.14** VAA8761110

## ULTRA TURBONATOR® REPLACEMENT PARTS

J.E. ADAMS



- These parts will work with the Ultra Turbonator Vacuum, Shampoo & Spot Remover Combo and Fragrance Combo

<b>\$478.20</b>	<b>T6T1-U5E</b>	CPI Talos 110V Validator
<b>\$3.80</b>	<b>VAA8843</b>	Polypropylene Filter Screen
<b>\$443.70</b>	<b>DM9MF</b>	Dixmor Multi-Function LED 9 Timer
<b>\$33.99</b>	<b>DM5R</b>	Remote For Dixmor Timer
<b>\$6.30</b>	<b>VAA5911D1</b>	Fluorescent Bulb
<b>\$213.20</b>	<b>IM208</b>	Imonex Electronic Coin Acceptor



### MEDECO SCREW LOCK INTERNAL LOCKS (BILL ACCEPTOR & COIN BOX)

VACUUM PARTS

**\$53.79** L00145



### MEDECO 2" EXTERNAL SCREW LOCK

VACUUM PARTS

**\$50.49** VAA89582



## ULTRA TURBONATOR® FRAGRANCE COMBO ONLY REPLACEMENT DECALS

J.E. ADAMS



<b>\$1.54</b>	<b>VAA8435-5</b>	Decal, List of Fragrances
<b>\$128.88</b>	<b>DEA29015Y-KIT</b>	Rotary Dial Decal Set - Yellow
<b>\$129.20</b>	<b>DEA29015B-KIT</b>	Rotary Dial Decal Set - Blue
<b>\$239.71</b>	<b>DEA29015-KIT</b>	Rotary Dial Decal Set - Black
<b>\$118.88</b>	<b>DEA29015B-KIT1</b>	Push Button Decal Set - Blue
<b>\$127.11</b>	<b>DEA29015-KIT1</b>	Push Button Decal Set - Black



### IMONEX COIN ACCEPTOR

VACUUM PARTS

**\$213.20** IM208

DOOR  
GASKET

MOTOR  
GASKET



### VAC DOOR & MOTOR GASKETS

VACUUM PARTS

**\$4.52** VA8159 Door Gasket  
**\$1.14** VA40020 Motor Gasket

## ULTRA TURBONATOR® SHAMPOO & SPOT REMOVER COMBO ONLY REPLACEMENT DECALS

J.E. ADAMS

<b>\$146.05</b>	<b>DEA29000Y-KIT</b>	Decal Set - Yellow
<b>\$146.07</b>	<b>DEA29000B-KIT</b>	Decal Set - Blue
<b>\$117.54</b>	<b>DEA29000-KIT</b>	Decal Set - Black

# VACUUMS & ACCESSORIES

## J.E. ADAMS PARTS & ACCESSORIES

New!



### VACUUM PEDESTAL

J.E. ADAMS

- Stainless steel vacuum base for J.E. Adams 9200 vacuums. Stand only.
- Does not include conduit or vault
- 30" D x 20" T
- Includes mounting studs to secure vacuum to base

CALL VAA32000-40A

New!



### VACUUM PEDESTAL FORMS

J.E. ADAMS

- Includes:
- Regular: 30" D X 20" T Sono-Tube
  - Large: 36" D X 20" T Sono-Tube
  - Framing for Vac Mounting Studs
  - PVC Conduit and Junction Box
  - Concrete NOT Included
  - Designed for use with J.E. Adams 9200 Series Vacuums Round Stainless Steel Pedestal

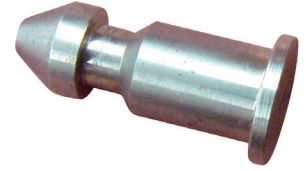
CALL VAA32000-30A Regular Form  
VAA32000-31A Large Form



### SPRING FOR KLEEN-RITE VAC BAG

VACUUM PARTS

\$9.44 VA40009



### WELD PIN FOR COIN BOX

VACUUM PARTS

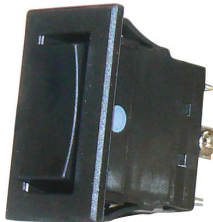
\$6.14 CBA8205



### SELECTION BULB FOR ADAMS FRAGRANCE/VAC BLUE LED

VACUUM PARTS

\$9.64 VAA5913D10



### ROCKER SWITCH (OLD STYLE, SCREW ON TERMINAL)

VACUUM PARTS

\$33.77 VEA1100051



### INLET TUBE FOR VAC HOSE

VACUUM PARTS

\$2.44 VAA86157



### ABUS DISKUS LOCK FOR 8202W & 8940-1W COIN BOX SECURITY COVERS

VACUUM PARTS

\$23.61 L00105

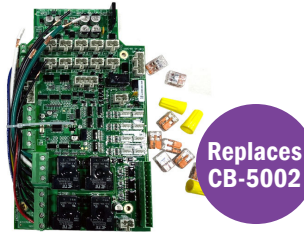


FOR ADAMS FRAGRANCE UNITS

### ROCKER SWITCH (NEW STYLE, PUSH ON TERMINALS)

VACUUM PARTS

\$10.59 VEA11000-55



Replaces CB-5002

### CIRCUIT BOARDS FOR PERISTALTIC PUMP

VACUUM PARTS

\$499.82 VAA5003RW1



FOR ADAMS/IDM VAC

### SSAC TIMER

VACUUM PARTS

\$90.72 TISSAC-A



FOR ADAMS

### MASTER COUNT TIMER

VACUUM PARTS

\$155.41 VAA8712-JEA



### FACE PLATE FOR ADAMS 8200 & 9200 PIN LOCK

VACUUM PARTS

\$66.67 CBA8211



### FACE PLATE (OLD STYLE) FOR ADAMS 8200, 8300 & 8500

VACUUM PARTS

\$23.69 VA40024



<https://www.jeadams.com/>

# VACUUMS & ACCESSORIES

## J.E. ADAMS PARTS & ACCESSORIES

### COIN BOX SECURITY COVER

J.E. ADAMS MACHINE PARTS

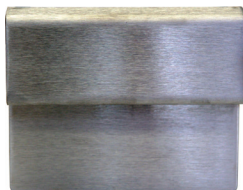


- **COIN BOX SECURITY COVER OPTION FITS:**
- 8940-1W fits models: 8930, 8940, 9220, 9230, 9240, 9250, 9253
- 8202W fits models: 8200 series, 8600 series, 8648 series, 9200 series, 9200-1 series, 9200-3 series, 9200-4 series, 9200-5 series, 9209 series, 9210 series, 9213 series and 9420 series

**\$88.38** CBA8202

### COIN BOX FOR ADAMS 9200 PIN LOCK

J.E. ADAMS MACHINE PARTS



**\$95.16** CBA8204

### LOCK BAR KLEEN-RITE J.E. ADAMS OLD STYLE

J.E. ADAMS MACHINE PARTS



**\$13.23** VA40025R

### ALLEN SCREW

VAC SUPPLIES & PARTS



- For Kleen-Rite Vac Dome

**\$0.99** VA40017

### MOUNTING ADAPTER

VAC SUPPLIES & PARTS



- For 24" domes

**\$8.88** VAA9900056

### LOCK BAR - (1" INSIDE)

J.E. ADAMS MACHINE PARTS



**\$44.21** VA40025

### LOCK BAR FOR 8202W & 8940-1W COIN BOX

J.E. ADAMS MACHINE PARTS

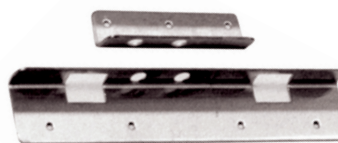


- Security covers 1 1/2" x 1/4" x 9"

**\$28.70** CBA8206

### SECURITY KIT FOR SERVICE DOORS

J.E. ADAMS MACHINE PARTS



- 1 kit is needed for each service door

**\$44.09** VAA8104

### LARGE DOME MOUNTING KIT

VAC SUPPLIES & PARTS



Includes:

- (4) Screws - 1/4-20 x 3/4 Hex Socket Head, Stainless Steel
- (4) Nuts - 1/4-20 Jam Nut, Stainless Steel
- (4) Nuts - 1/4-20 Kepp Nut, Stainless Steel
- (4) Washers - Flat 1/4", Stainless Steel
- (4) Washers - Thick, Nylon

**\$23.16** VAA8307

### J.E. ADAMS DECALS

DECALS



DEA84294



DEA920014



DEA84302

PRICE	PART #	DESCRIPTION
<b>\$2.82</b>	DEA8173	Deposit quarters slowly
<b>\$4.31</b>	DEA84232	Dome Decal
<b>\$21.37</b>	DEA84251	Dual Vac/lower canister
<b>\$14.85</b>	DEA84252	Dual Vac/upper canister
<b>\$22.68</b>	DEA84271	Air/Vac tank vac only
<b>\$25.30</b>	DEA84272	Air/Vac tank air only
<b>\$22.27</b>	DEA84273	Air/Vac Dome front
<b>\$36.06</b>	DEA84301	Air machine door

PRICE	PART #	DESCRIPTION
<b>\$8.31</b>	DEA84302	Side Decal air machine
<b>\$12.79</b>	DEA9200FPD	Faceplate Decal w/ Prices
<b>\$2.60</b>	DEA84293	Vac Decal .50¢
<b>\$2.76</b>	DEA85671	Vac Decal .75¢
<b>\$100.18</b>	DEA920012	**Blue Super Vac
<b>\$102.18</b>	DEA920011	**Yellow Super Vac
<b>\$105.59</b>	DEA920013	**Violet Super Vac

\*\* DOME DECALS NOT INCLUDED

PRICE	PART #	DESCRIPTION
<b>\$60.29</b>	DEA920014	Decal Kit for 9200, 9210, 9213 - Includes 1 of each: 9200FPD faceplate decal, 8423-2 dome decal, 8427-1 canister decal (**NOW MEASURES 28" X 11"), 8429-1 "Hang Hose Here" decal

### SECURITY COVER SERVICE DOOR

J.E. ADAMS MACHINE PARTS



- **FACTORY INSTALLED ON NEW VAC ORDERS ONLY! THIS ITEM CANNOT BE INSTALLED IN THE FIELD!**
- Accommodates all J.E. Adams round 2 door vacuums, air/vacuums, air/water vacuums, & 2 door combo units.
- Includes Medeco lock
- Dimensions: 3.5"W x 40.5"H x 1.5"D

**\$151.69** VAA9427K

### OPTIONAL DOMES

J.E. ADAMS MACHINE PARTS



<b>\$117.25</b>	VAA8306B	Blue
<b>\$117.25</b>	VAA8306DG	Dark Green
<b>\$117.25</b>	VAA8306N	Natural
<b>\$117.25</b>	VAA8306R	Red
<b>\$117.25</b>	VAA8306Y	Yellow
<b>\$477.95</b>	VAA8305	24" Stainless
<b>\$258.75</b>	VA40015	20" Stainless

# VACUUMS & ACCESSORIES

## J.E. ADAMS DECALS



BLUE



YELLOW



VIOLET

### COLORED DECALS

J.E. ADAMS



- 6-piece vinyl decal set, sold as complete kit only
- Durable, UV protected, fade-resistant vinyl
- Covers maximum surface area for widest exposure
- **THESE DECALS WILL WORK FOR THE**

#### FOLLOWING VACUUMS:

(Stainless Steel & Lighted Domes)  
 VAA9200 Series, VAA9210 Series,  
 VAA9213 Series, VAA9200-1 Series,  
 VAA9200-3 Series, VAA9209 Series,  
 VAA9209-6 Series

<b>CALL</b>	<b>DEA920012</b>	Blue
	<b>DEA920011</b>	Yellow
	<b>DEA920013</b>	Violet



### 4¾" H X 2½" W DECALS

J.E. ADAMS VAC DECALS

- Power indicator and last coin alert

**DEA8000-8**



### 4¾" H X 2½" W DECALS

J.E. ADAMS VAC DECALS

- Shock warning

**DEA8183**

**BRIGHTEN UP YOUR VACUUMS WITH A NEW SET OF DECALS!**  
 THESE BOLD, BRIGHT DECALS FROM J.E. ADAMS COME IN A WIDE RANGE OF COLORS AND STYLES FOR TANKS, DOMES AND COIN BOXES.



### 16½" H X 6½" W DECALS

J.E. ADAMS VAC DECALS

- Blue Faceplate Decal for Super Vac with Bill Validator & Digital Display
- Used on the following J.E. Adams models: 9200-1, 9200-1LD, 9200-3, 9200-3LD

<b>CALL</b>	<b>DEA92001D112</b>	Blue	<b>CALL</b>	<b>DEA92001D113</b>	Purple
	<b>DEA92001D111</b>	Yellow		<b>DEA92001D110</b>	Black



# VACUUMS & ACCESSORIES

J.E. ADAMS AIR/WATER/VAC MACHINES



## AIR/WATER/VAC COMBO

J.E. ADAMS



### STANDARD FEATURES:

- (2) 2 110 volt non-accumulating timers, vacuum and air or water can be used simultaneously
- 2 side-mounted retractable hose reels for both air & water
- 1 coin box w/ 2 mechanical coin acceptors takes quarters
- 2 service doors
  - Single pin lock coin box
- 4 quick change filter bags
  - 2 - 1.6 HP, 120 volt motors
- Toggle switch for air & water
- Optional security for service doors (8104), coin box security cover (8202W), lock bar (8206), Abus lock (6024), clean out bag (8599), 9427 dual service door security cover
- Hose color options: Red, blue, yellow, or green (black is standard)

**CALL** VEA8648GH



## AIR/WATER/VAC COMBO

J.E. ADAMS



### STANDARD FEATURES:

- (2) 2 110 volt non-accumulating timers, vacuum and air or water can be used simultaneously
- 1 coin box with 2 mechanical coin acceptors takes quarters
- 2 service doors
- Single pin lock coin box
- (2) 1.6 HP, 120 volt motors
- 4 quick change filter bags
- 25' wire mesh braided hose for air & water
- Toggle switch for air & water
- Optional security for service doors (8104), coin box security cover (8202W), lock bar (8206), Abus lock (6024), clean out bag (8599), 9427 dual service door security cover
- Hose color options: Red, blue, yellow, or green (black is standard)

**CALL** VEA8648G



## AIR MACHINE

J.E. ADAMS AIR



### STANDARD FEATURES:

- Mechanical coin acceptor takes quarters
- 110 volt non-accumulating timer
- High-security locking bar system with Medeco cam lock
- Gast ¾ HP air compressor
- 25' wire mesh braided air hose with 90 PSI air gauge
- Mounts on VEA8819 pedestal sold separately

**CALL** VEA8670-2GA

## FREE AIR MACHINE

J.E. ADAMS

- Gast ¾ HP air compressor

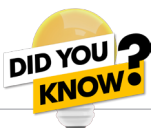
<b>CALL</b>	VEA8670-2FGA	Push Button
	VEA8670-DIGPF	Digital

## AIR MACHINE PEDESTAL

J.E. ADAMS

- Painted Steel

**CALL** VEA8819



Vacuums & air machines are a great way to increase revenue! Easy to install and maintain, while giving your customers the opportunity to clean their cars and check their tires - all in one convenient place!

**GET THE EQUIPMENT AND ACCESSORIES YOU CAN RELY ON RIGHT HERE!**

# VACUUMS & ACCESSORIES

J.E. ADAMS AIR MACHINES



WALL OR PEDESTAL MOUNTED!

## DIGITAL AIR MACHINE

J.E. ADAMS



- With the digital air machine, proper tire inflation is no longer a hassle. Automatic high-precision calibration is now quick and consistent. The unit automatically inflates a tire to within 0.5 PSI of the desired pressure. All the operator needs to do is set the target PSI. No need to shut off the unit as it reaches its goal. Ending over-inflation through advanced calibration. Introducing digital PSI calibration into the equation has made inexact, time-consuming manual inflation obsolete.
- Using the plus and minus buttons, set recommended tire pressure and connect the hose chuck to the tire valve stem. The unit will read the actual tire pressure, automatically inflate or deflate to the pre-set pressure. When complete, the gauge will automatically stop and beep, indicating that the operation is complete.

### STANDARD FEATURES:

- Gast ¾ HP air compressor, oil-less, 18-month warranty
- Inflates to preset pressure
- Easy to read LCD backlit display
- Set desired tire pressure with (+) and (-) touch buttons
- Built in unit heater
- Temperature safe from -20°F to 158°F
- Automatic compressor shut off
- Electronic pressure relief valve
- High Security lock bar system
- Imonex mechanical coin acceptor takes quarters
- Flat tire button determines back pressure and fills accordingly
- Pressure range 4-70 PSI (accuracy +/- .5 PSI)
- Wall or pedestal mounted \*\*PEDESTAL SOLD SEPARATELY\*\*

<b>CALL</b>	<b>VEA8670-DIGP</b>	Air Machine
	<b>VEA8670-DIGPW</b>	Air & Water
	<b>VEA8819</b>	Pedestal



WALL OR PEDESTAL MOUNTED!

## ECONOMY AIR MACHINE

J.E. ADAMS



### STANDARD FEATURES:

- Requires 10 AMP service
- Dimensions: 11.06" H x 12.5" D x 17" W
- Gast ¾ HP air compressor, oil-less, 18-month warranty
- J.E. Adams Master Count 110 volt non-accumulating timer standard
- Cut-resistant 25' x 1/4" with wire braid service station quality air hose with 90 PSI inline air gauge
- Secured with (2) Medeco screw locks
- Imonex mechanical coin acceptor takes quarters
- Includes coin box cover, lock bar & abus lock
- Optional: "Free Service" wireless push-button remote control allows customers to receive free use of either service for the normal cycle time. The optional "Free Service" can be activated by the attendant or the cashier with the push of a button for customer convenience.
- Wall or pedestal mounted \*\*PEDESTAL SOLD SEPARATELY\*\*

<b>CALL</b>	<b>VEA8685-2G</b>	Air Machine
	<b>VEA8819-50</b>	Pedestal



## MASTER COUNT TIMER VACUUM PARTS

- Master Count standard in 8685 series

**\$155.41**      **VAA8712-JEA**

# VACUUMS & ACCESSORIES

## J.E. ADAMS AIR MACHINES



WALL OR  
PEDESTAL  
MOUNTED!



RETRACTABLE  
HOSE REEL  
BASE!



RETRACTABLE  
HOSE REEL  
BASE!

### AIR/WATER MACHINE

J.E. ADAMS



#### STANDARD FEATURES:

- Mechanical coin acceptor takes quarters
- 110 volt non-accumulating timer
- High security locking bar system with Medeco lock
- 25' wire mesh braided air hose with 90 PSI air gauge
- 25' wire mesh braided water hose with lever activated water spout
- Gast ¾ HP air compressor
- Mounts on VEA8819 pedestal sold separately
- Air/Water Machine includes push-button on/off

<b>CALL</b>	<b>VEA8670-2WGA</b>	Air Machine
	<b>VEA8670-2WFGA</b>	Free Air/Water Machine
	<b>VEA8819</b>	Pedestal

### AIR MACHINE ON RETRACTABLE HOSE BASE

J.E. ADAMS



#### STANDARD FEATURES:

- Mechanical coin acceptor takes quarters
- 110 volt non-accumulating timer
- High security locking base system with Medeco cam lock
- Gast ¾ HP air compressor
- Mounts on VEA6026 retractable air hose reel base sold separately

#### FREE AIR MACHINE:

- Gast ¾HP air compressor
- Includes push-button on/off

#### RETRACTABLE HOSE REEL BASE:

- 25' wire mesh braided air hose with 90 PSI air gauge

<b>CALL</b>	<b>VEA8670-2BGA</b>	Air Machine
	<b>VEA8670-2FBGA</b>	Free Air Machine
	<b>VEA6026</b>	Retractable Hose Base

### AIR/WATER MACHINE ON RETRACTABLE HOSE BASE

J.E. ADAMS



#### STANDARD FEATURES:

- Mechanical coin acceptor takes quarters
- 110 volt non-accumulating timer
- Air and water can be used simultaneously
- Gast ¾ HP air compressor
- Mounts on VEA6025 retractable air and water hose reel base sold separately

#### FREE AIR & WATER MACHINE:

- Gast ¾ HP air compressor
- Includes push-button on/off

#### RETRACTABLE HOSE REEL BASE:

- 25' wire mesh braided air hose with 90 PSI air gauge
- 25' wire mesh braided water hose with lever activated water spout

<b>CALL</b>	<b>VEA8670-2WBGA</b>	Air Machine
	<b>VEA8670-2WFBGA</b>	Free Air & Water Machine
	<b>VEA6025</b>	Retractable Hose Base

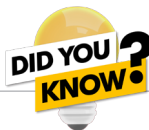


### 120V NON-ACCUMULATING TIMER AIR MACHINE REPLACEMENT PARTS

- Master Count standard in 8670 series

**\$90.27**

**TIA8712SS5**



- Bases/Pedestals are sold separately
- A great add-on at any location
- Keeping a spare air hose and air chuck on hand is an excellent idea!

# VACUUMS & ACCESSORIES

## AIR MACHINE PARTS & DECALS



**WATER SPOUT FOR AIR/WATER MACHINE**  
AIR MACHINE REPLACEMENT PARTS

**\$31.78** VEA8647



**GAST COMPRESSOR**  
AIR MACHINE REPLACEMENT PARTS

**\$509.06** VEA9862

**KIT COMPRESSOR & BRACKET**  
AIR MACHINE REPLACEMENT PARTS

**\$548.66** VEA9862-1A



**TIRE INFLATOR W/ GAUGE**  
AIR MACHINE REPLACEMENT PARTS

**\$39.62** VAA8533



**AIR HOSE ASSEMBLY**  
AIR MACHINE REPLACEMENT PARTS

**\$69.67** VAA8532



**WHIP ASSEMBLY**  
AIR MACHINE REPLACEMENT PARTS

**\$10.00** VAA853311



**.75¢ AIR DECAL**  
AIR MACHINE DECALS

**\$2.76** DEA85671



**AIR DECAL KIT**  
AIR MACHINE DECALS

**\$41.69** VAA84301AKIT Decal Kit  
**\$8.31** DEA84302 Side Decal Only

## ACME TIRE INFLATORS



**INFLATOR WITH GAUGE DUAL END**  
ACME TIRE INFLATORS

**\$24.44** AC0505



**INFLATOR WITH GAUGE STRAIGHT**  
ACME TIRE INFLATORS

**\$22.36** AC0500



**REPLACEMENT HOSE & NOZZLE**  
ACME TIRE INFLATORS

**\$6.66** AC0510



**REPLACEMENT CHUCKS**  
ACME TIRE INFLATORS

**\$2.70** AC812 Replacement Chuck with Barb  
**\$4.49** AC0512 Replacement Chuck with 1/4" F



## BLOW GUNS



**TYPHOON ADJUSTABLE AIR COMPRESSOR BLOW GUN**  
COILHOSE® PNEUMATICS



- Used for non-contact cleaning. Removes debris and dust using compressed air. Constructed with a non-marring high-performance polymer so tough it still operates after being driven over.

**SPECIFICATIONS:**

- Construction: High Performance Polymer
- Knob: Air Flow Adjustable Knob
- Color: Black and Red
- Inlet: 1/4" NPT
- OSHA Compliant: OSHA 1910.242B and OSHA 1910.95
- Weight: 0.40 lbs.

**FEATURES:**

- Durable Polymer Construction
- Maximum Power and Performance
- Flow Control Built-In
- Non-Marring Body and Tip
- OSHA Compliant

**\$17.93** TYP-2505-DL

# VACUUMS & ACCESSORIES

## J.E. ADAMS DETAIL STATIONS



### WALL OR PEDESTAL MOUNTED!

#### SHAMPOO/SPOT REMOVER

J.E. ADAMS



##### STANDARD FEATURES:

- Wall or pedestal mount
- Large digital display timer scrolls messages, counts down time, scrolls prices of services
- Imonex mechanical quarter coin acceptor comes standard, additional mechanical coin acceptors are available
- Pin lock style coin box
- Internal automatic heater
- Gast 1/12 HP oil-less compressor
- Medeco threaded door locks
- Rocker switch on brush handle to select between shampoo and spot remover
- 1 oz. of shampoo or spot remover makes 2½ gallons of foam
- **SHOWN WITH OPTIONAL DECAL. ALSO AVAILABLE IN YELLOW. STANDARD DECAL IS BLACK.**

<b>CALL</b>	<b>VAA11000</b>	Machine
	<b>VEA8819</b>	Floor Pedestal

#### SHAMPOO/SPOT REMOVER/ FRAGRANCE STATION

J.E. ADAMS



##### STANDARD FEATURES:

- Toggle between 3 fragrances, spot remover & shampoo
- Wall or optional pedestal mount
- Large digital display timer - scrolls messages, counts down time, scrolls price of services
- Imonex mechanical quarter coin acceptor comes standard, additional mechanical coin acceptors are available
- Pin lock style coin box
- Internal automatic heater
- Gast 1/12 HP oil-less compressor
- Medeco threaded door locks
- Rocker switch on brush handle to select between shampoo and spot remover
- 1 oz. of shampoo or spot remover makes 2½ gallons of foam
- Dispenses ¾ oz of fragrance in 30 seconds

<b>CALL</b>	<b>VAA12000</b>	Machine
	<b>VEA8819</b>	Floor Pedestal

#### FRAGRANCE STATION

J.E. ADAMS



##### STANDARD FEATURES:

- Requires 10 AMP service
- Dispenses your choice of 3 fragrances (Wild Cherry, New Car, French Vanilla )
- Fragrance dispenses .75 oz of fragrance formula per thirty seconds, which is equal to 1.5 oz of liquid formula per minute. 1 gallon of liquid formula = 128 oz and the dispensing rate is 1.5 oz per minute. One gallon of liquid formula yields 85 minutes of vend time or 170 thirty-second vend cycles.
- Average vend time \$1.00 for 1 minute.
- Wall or pedestal mounted (Item #8819)
- **PEDESTAL SOLD SEPARATELY**
- Louvered sides minimize heat build-up inside cabinet
- Imonex mechanical quarter coin acceptor comes standard
- Large Dixmor digital display timer – scroll messages, counts down time, scrolls price of services
- Digital display can be easily programmed with remote control which is available at a nominal charge
- Medeco threaded door locks (Replacement Item #8958-1)
- Pin lock style coin box (Replacement Item #8638)
- Internal automatic heater
- Indicator light shows when unit has power
- Optional last coin alert and additional mechanical coin acceptors are available

<b>CALL</b>	<b>VAA13000</b>	Fragrance Station
	<b>VAA13000V</b>	With Bill Acceptor
	<b>VAA13000VR</b>	Vault Ready

## SHORT ON SPACE?

J.E. Adams detail stations are a profitable and unique way to draw attention to your site when space is at a premium. Units can be wall-mounted or placed on a pedestal.

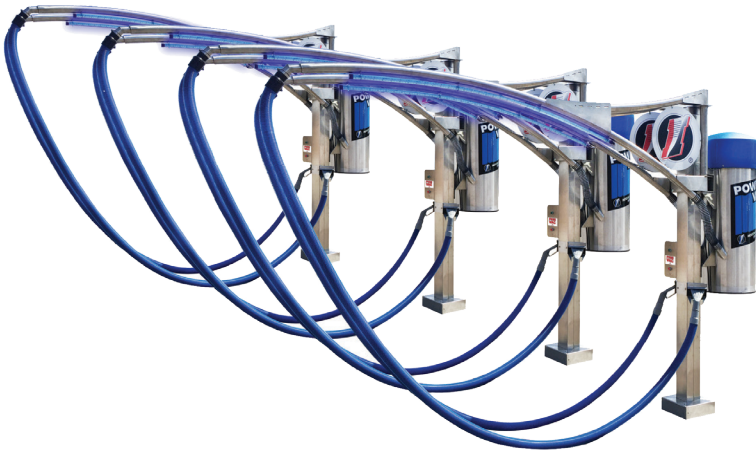
# VACUUMS & ACCESSORIES

## IVS ARCH VACUUM SYSTEMS

### ARCH BAY VACUUM SYSTEM INDUSTRIAL VACUUM SYSTEMS



• Attract customers with this popular and custom look at your car wash. The swivel or fixed boom design keeps your hoses off the ground so they don't get dirty, and are easy for your customers to use. The system can be ordered in a single or dual-boom configuration. IVS engineered the ARCH BAY VACUUM SYSTEMS out of stainless steel for durability and a long service life. The boom arm can swivel 180° or it can be locked into a fixed position. Comes with LED lighting. Signage can be customized for your car wash's branding. Vacuum can be controlled by a free vac push-button or a coin box.



- Single or dual arm
- Flexibility - connects to any IVS vacuum or central vac system
- Stainless steel construction for long-lasting durability
- Adjustable boom(s) can swivel 180° or can be fixed stationary
- Customizable LED lighting, trash bins, racks, mounting options for pylon or islands, coin box or free vac timer options
- Branded signage on arch can be custom printed/branded

#### DIMENSIONS:

- **BOOM ARM:** 120" Long • **BASE POLE:** 99" Tall

### POLE MOUNT 3 MOTOR ARCH VACUUM INDUSTRIAL VACUUM SYSTEMS

- Blue lighted dome
- Blue hose
- Dual intake snap seal filters
- (3) 120V Motors

**CALL VAI100070**

### DOUBLE ARCH POLE PACKAGES INDUSTRIAL VACUUM SYSTEMS

**CALL VAI100071**

### SINGLE ARCH POLE PACKAGES INDUSTRIAL VACUUM SYSTEMS

**CALL VAI100072**

## IVS AIR MACHINES & VACUUMS



WALL OR  
PEDESTAL  
MOUNTED!

VAI90001-I



VAI90001-Y



VAI90001-G



VAI90001-BL

### AIR MACHINE INDUSTRIAL VACUUM SYSTEMS



- IVS proprietary Air Compressor
- ¼" steel braided rubber 25' air hose assembly
- 14 gauge stainless steel construction
- Optional hose hanger mounting
- 110V accumulating timer assembly
- 1-85 PSI tire inflation
- Air inflation gauge
- Concealed pin lock locking mechanism
- Internal coin drawer with lock mounting

#### PRODUCT OPTIONS:

- Imonex mechanical coin acceptor (standard)
- Sensotron single coin electronic coin acceptor (optional)
- Multitron World Edition electronic coin acceptor (optional)
- IDX MA-850 coin acceptor (optional)
- Mars MEI \$1, \$5 bill acceptor assembly (optional)

#### POWER REQUIREMENTS:

- 120 vac single phase

<b>CALL</b>	<b>VAI90001-I</b>	Red W/ Imonex Coin Acceptor
	<b>VAI90001-I-BL</b>	Blue W/ Imonex Coin Acceptor
	<b>VAI90001-I-Y</b>	Yellow W/ Imonex Coin Acceptor
	<b>VAI90001-I-G</b>	Green W/ Imonex Coin Acceptor
	<b>VAI90001-S</b>	W/ Sensotron Coin Acceptor
	<b>VAI90001-F</b>	Free W/ Push Button
	<b>VAI90001P</b>	Pedestal



PLEASE SPECIFY COLOR WHEN ORDERING.  
AVAILABLE IN BLUE, RED, GREEN AND BLACK!

### MINI POWER VAC INDUSTRIAL VACUUM SYSTEMS



- Featuring the power you expect from IVS in a compact profile that's light enough to ship non-freight! Multiple mounting options are available for maximum flexibility

#### STANDARD FEATURES:

- Airflow - 94 CFM, 84", suction lift (water)
- Motor - 900 Watt electric; by-pass, two stage, 7 amp
- Electronic timer - Direct, switch-type, high capacity output, accumulates 1 to 15 coins, controls cycle time from 2 seconds to 8.5 minutes per coin or on/off toggle switch.
- Hose - 1½" x 15' long, high flex crushable plastic, includes cuff and polyethylene hand tool plus crevice tool
- Tank - 18 gauge powder coated steel
- Wall or post mount
- 50 lbs.
- **ALSO AVAILABLE WITHOUT COIN ACCEPTOR**

<b>CALL</b>	<b>MPV1000</b>	W/ Sensotron Coin Acceptor
	<b>MPV2000</b>	W/ ON/OFF switch

# VACUUMS & ACCESSORIES

## IVS POWER VACS



VAI100002



VAI100005

### POWER VAC - COMMERCIAL

INDUSTRIAL VACUUM SYSTEMS



#### STANDARD FEATURES:

- Floor mount
- Two heavy-duty motors deliver maximum cleaning power and reliable performance
- High-capacity filter system - Reduces maintenance intervals, saves you money
- Perform routine filter changes and maintenance quickly reduces operating costs and labor
- Large-bore hose with anti-clog inlet design keeps your vacuums running profitably
- Stainless steel construction stands up to the toughest environments

<b>CALL</b>	<b>VAI100002</b>	Commercial Vac - 2 Motors
	<b>VAI100002-3</b>	Commercial Vac - 3 Motors, Stainless Steel Dome, On/Off Toggle
	<b>VAI100005</b>	Pole Or Wall Mounting, 2 Motors, On/Off Toggle
	<b>VAI100005PB</b>	Vacuum, Pole/Wall Mount, 2 Motors, Push Button
	<b>VAI100006-2</b>	Commercial Vac - 3 Motors, Stainless Steel Dome, Dual Hose, Push Button



VAI140000



VAI140001

### POWER VAC

INDUSTRIAL VACUUM SYSTEMS



#### STANDARD FEATURES:

- Large bore hose (2") with anti-clog inlet design
- Mechanical coin mechanism
- 4-bag filter system
- Integral coin vault with pin lock
- 2 heavy-duty motors
- Eye-catching graphics

#### OPTIONS AVAILABLE:

- Single or multi coin acceptor
- Meter panel security bar
- Mirror finish
- Third motor
- Lighted dome, choose from 5 colors (white, red, blue, yellow, green)
- Locking clean out door shroud
- Coin vault security bar
- Set up for in-ground safe
- Quiet kit (factory installed)
- Bill acceptor

<b>CALL</b>	<b>VAI140000</b>	2 Motors, SS Dome, Imonex
	<b>VAI140000-2LD</b>	2 Motors, Lighted Dome, Imonex
	<b>VAI140000-3</b>	3 Motors, SS Dome, Imonex
	<b>VAI140000-3LD</b>	3 Motors, Lighted Dome, Imonex
	<b>VAI140000-3LDM</b>	3 Motors, Digital Display, Lighted Dome, Mars \$1-5
	<b>VAI140001</b>	For In-Ground Safe



VAD1030



VAI106204



VAI104583\*



TIGS403



### POWER VAC - AIR / VAC

INDUSTRIAL VACUUM SYSTEMS



#### STANDARD FEATURES:

- Large bore hose (2") with anti-clog inlet design
- Integral coin vault with pin lock
- 4-bag filter system
- High-flow air compressor
- Eye-catching graphics
- Mechanical coin mechanism
- 2 heavy-duty motors

#### OPTIONS AVAILABLE:

- Bill acceptor
- Quiet kit (factory installed)
- Lighted dome, choose from 5 colors (white, red, blue, yellow, green)
- Coin vault security bar, meter panel security bar
- Locking clean-out door shroud

<b>CALL</b>	<b>VAI240000</b>	GinSan Compressor - Imonex
	<b>VAI240000G</b>	Gast Compressor - Imonex
	<b>VAI240001</b>	For In-Ground safe

### POWER VAC SERIES REPLACEMENT PARTS

INDUSTRIAL VACUUM SYSTEMS

\* DECAL KITS INCLUDE:  
TANK DECAL, DOME DECAL, \$.75 - \$1.25 BLACK/SILVER DECALS, BLACK/SILVER COIN BOX DECAL



<b>\$301.34</b>	<b>VAI102500</b>	Stainless Steel Dome
<b>\$143.75</b>	<b>VAI102502</b>	Red Dome
<b>\$143.75</b>	<b>VAI102503</b>	Yellow Dome
<b>\$143.75</b>	<b>VAI102504</b>	White Dome
<b>\$143.75</b>	<b>VAI102505</b>	Green Dome
<b>\$143.75</b>	<b>VAI102507</b>	Blue Dome
<b>\$132.12</b>	<b>TIGS403</b>	Ginsan GS403

<b>\$26.35</b>	<b>VAI107803</b>	110V/24V Transformer
<b>\$60.06</b>	<b>VAI106204</b>	Relay & Socket
<b>\$154.29</b>	<b>CB0201</b>	Ginsan Sensortron
<b>\$318.75</b>	<b>VAI104529</b>	Lock Shroud
<b>\$8.79</b>	<b>DKPV100</b>	Decal Kit - Warning Labels (3)
<b>\$1.17</b>	<b>VAI102309</b>	\$1.25 Black/Silver Decal
<b>\$1.17</b>	<b>VAI102308</b>	\$1.00 Black/Silver Decal

<b>\$1.78</b>	<b>VAI106800</b>	Motor Screen
<b>\$30.17</b>	<b>VAD1030</b>	Clean Out Bag (Vinyl)
<b>\$60.06</b>	<b>VAI105802</b>	Electric Channel
<b>\$14.57</b>	<b>VAD1000</b>	Filter Bags
<b>\$68.84</b>	<b>VAI1045940</b>	Air/Vac Decal Kit
<b>\$22.36</b>	<b>AC0500</b>	Tire Inflator with Gauge
<b>\$96.44</b>	<b>VAI1040020</b>	Air/Vac Hose - 25'

# VACUUMS & ACCESSORIES

## IVS POWER VAC COMBO UNITS



INCREDIBLY POWERFUL

INDUSTRIAL VACUUM SYSTEMS



### POWER VAC SHAMPOO COMBO UNIT INDUSTRIAL VACUUM SYSTEMS

#### STANDARD FEATURES:

- Utilizes the Dixmor LED6 Sooper display as timer and control, all in one
- 2 extended brush life motors
- Lockable cash box keeps profits secure and out of sight
- Heavy 12-gauge steel doors and control box with high security plug style locks
- VAI5500 & VAI5510: No jugs or tanks to refill
- Bottom of the unit offers ample space for your own gallon jugs
- Industrial, heavy-duty relays and contactors
- Compact profile uses standard vacuum mounting pattern for easy upgrading from your existing vacuums
- Lock shroud option to provide limited access to filters and debris collector

#### SPECIFICATIONS:

- VAI5500 & VAI5510 Motors: 2 Motor Combo 120V Extended Brush Life
- VAI5520 Motors: 3 Motor Combo 120V Extended Brush Life
- Dome Color: Specify (Blue, Yellow, Red, Green, White)
- Dome Light Kit: 120V
- Hose Tool: Duckfoot 2" with Straight Cuff
- Hose: 2"x15'; Black (other colors available)
- Coin Acceptor: Sentsortron 2

CALL	MODEL	FEATURES
	VAI5500	No Bill Acceptor
	VAI5500-BA	W/ Bill Acceptor, CPI Talos \$1 & \$5 Bill Acceptor
	VAI5510	No Bill Acceptor
	VAI5510-BA	W/ Bill Acceptor, CPI Talos \$1 & \$5 Bill Acceptor
	VAI5520	No Bill Acceptor
	VAI5520-BA	W/ Bill Acceptor, CPI Talos \$1 & \$5 Bill Acceptor



VAI102329



DEA8173



VAI102349



VAI104583

### IVS DECALS

#### DECALS

PRICE	PART #	DESCRIPTION
\$70.27	VAI104585*	Power Vac Blue Tank Decal & Blue Dome Instructional Decal
\$1.17	VAI102308	\$1.00 Silver/Black
\$68.84	VAI104583	Power Vac Red Tank Decal & Red Dome Instructional Decal
\$30.76	DKAV100	Air/Vac Decal Kit
\$30.76	VAI102329	Power Vac Yellow
\$19.03	VAI102335	Dome Instruction Yellow
\$17.57	VAI102339	Dome Instruction Teal/Black
\$52.73	VAI102349	2 piece Power Vac, red, white & blue
\$1.17	VAI102386	.75¢ Black/Silver

\* DECAL KITS INCLUDE: TANK DECAL, DOME DECAL, \$.75 - \$1.25 BLACK/SILVER DECALS, BLACK/SILVER COIN BOX DECAL



RED, GREEN, BLUE TECH



RED, BLUE GRID



USA



### RED, WHITE & BLUE DECALS 4" x 2½"

#### DECALS

\$1.15	VA30077	50¢
\$1.15	VA30216	75¢
\$1.15	VA30301	\$1.00

### DELUXE VAC TANK DECALS

#### VACUUM ACCESSORIES

- Peel & Stick • 31" x 10"

\$19.99	VA50025R	Red Tech
	VA50025G	Green Tech
	VA50025BL	Blue Tech
	VA50065R	Red Grid
	VA50065BL	Blue Grid
	VA50050	USA

### KLEEN-RITE TANK DECALS

#### DECALS

- Peel & Stick • 31" x 10"

\$8.99	VA40026R	Red
	VA40026Y	Yellow
	VA40026BK	Black
	VA40026BL	Blue
	VA40026G	Green

### 4" W x 3" H RED & WHITE

#### DECALS

\$0.78 CB0373



### PLEASE DO NOT VACUUM WATER

#### DECALS & SIGNS

\$6.99	SI0136	12" x 12" Sign
\$0.92	DE040	3" x 3" Decal
\$0.92	DE040S	3" x 3" Decal - Spanish





# VACUUMS & ACCESSORIES

## J.E. ADAMS ULTRA SERIES VAC ISLAND CANOPIES & BASES



### 8' VAC ISLAND & CANOPY

J.E. ADAMS



- Ultra Single 8' Vacuum Island Base (32008) and Canopy (32008CAN)
- All models include two poles



### 12' VAC ISLAND & CANOPY

J.E. ADAMS



- Ultra 12' Vacuum Island Base (32012) and Canopy (32012CAN) with Ultra Turbo-Nator and Ultra 6-in-1 Combination Vacuums

## CANOPIES

J.E. ADAMS

- Available in red, blue, yellow & green
- Unique two-piece modular canopy design is more cost effective to ship
- Aluminum frame, poles and vinyl cover make the canopy lightweight, durable, and weather resistant - logo can be customized for an additional fee
- Easily assembles in about one hour
- Canopies come with fluorescent light fixtures with easy access to bulbs for replacement
- One section could be replaced if damaged at your location - unlike one-piece construction

## FOR USE WITH BASE

J.E. ADAMS

<b>32008CAN</b>	8' Single Vacuum Island Canopy
<b>32010CAN</b>	10' Vacuum Island Canopy
<b>32012CAN</b>	12' Vacuum Island Canopy

## FOR USE WITHOUT BASE

J.E. ADAMS

<b>32008CAN-NB</b>	8' Single Vacuum Island Canopy
<b>32010CAN-NB</b>	10' Vacuum Island Canopy
<b>32012CAN-NB</b>	12' Vacuum Island Canopy

**CALL FOR PRICES**

## BASES

J.E. ADAMS

- Black bumper guards
- Total stainless steel construction including interior frame and vacuum platforms provide years of use while still looking like new
- Unique modular construction consists of three separate pieces (double vacuum island bases) and two separate pieces (single vacuum island base)
- Modular construction results in reduced freight costs; easily assembles without a forklift in about two hours
- Teepee mat holder with (4) mat clamps are permanently attached to the center module which cuts down on potential replacement parts
- Modular design allows for replacement of any section or part if damaged at your location (unlike one-piece designed islands requiring total replacement)
- Trash service door is secured with (2) Medeco cam locks and trash can be deposited from four directions into container
- Slide-out trash removal is readily accessible by door

## FOR USE WITH CANOPY

J.E. ADAMS

<b>32008</b>	8' Single Vacuum Island Base
<b>32010</b>	10' Vacuum Island Base
<b>32012</b>	12' Vacuum Island Base

## FOR USE WITHOUT CANOPY

J.E. ADAMS

<b>32008-1</b>	8' Single Vacuum Island Base
<b>32010-1</b>	10' Vacuum Island Base
<b>32012-1</b>	12' Vacuum Island Base

## VAULT READY

J.E. ADAMS

<b>32008VR</b>	8' Single Vacuum Island Base - Vault Ready
<b>32010VR</b>	10' Vacuum Island Base - Vault Ready
<b>32012VR</b>	12' Vacuum Island Base - Vault Ready

# EXPRESS VACUUMING REPAIR & REPLACEMENT PARTS






When your vacuums begin to lose suction, you begin to lose money. Many customers place equal importance on interior and exterior cleaning, and aren't interested in a weak vacuum that barely works. Without effective suction, customers may start to feel your car wash doesn't deliver the cleanliness they seek!

That's why Kleen-Rite sells express vacuuming repair and replacement parts for your car wash vac systems. These top selling items are inexpensive yet essential - perfect for replacing worn vacuum parts! As with any piece of equipment at your car wash, the right parts are necessary to keep your vacuum in good shape.



## KLEEN-RITE VAC HOSE



-  Kleen-Rite offers many affordable vacuum hose options.
-  Plus, these flexible hoses are all made in America!
-  **COLOR OPTIONS:** Include red, blue, black, gray, and yellow
-  **HOSE LENGTHS:** Include 15' and 50'
-  **DIAMETERS:** 2" and 1½"

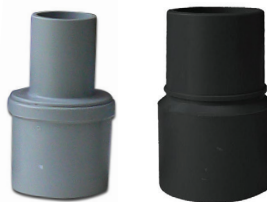
## VACUUM NOZZLES



During vacuum upkeep, remember that suction loss could be the result of a cracked or broken nozzle!

A vacuum crevice tool slim nozzle makes it possible to reach tight, hard-to-access areas in vehicles. A claw nozzle has a wide design for cleaning interior surfaces.

## SWIVEL CUFFS



Another handy item that can reduce damage to your vac hose is a swivel cuff. The cuff allows the hose to swivel around and move easily during use, to avoid twisting and kinking. Not only does it help reduce hose damage, but it also improves maneuverability for customers.

## INLET VALVES & HOSE ADAPTERS

Inlet valves provide a quick connection of a male hose coupling to the vac system. Hose adapters connect another piece of hose or an attachment to your existing hose. Kleen-Rite sells two popular items compatible with 1½" hose. These aluminum parts offer a durable alternative to plastic models.

### INLET VALVE



KR# VCV500

### HOSE ADAPTER



KR# VCHA150

# FEATURED PRODUCT

## EXPRESS VACUUM SYSTEM PARTS



### VAC NOZZLE HANGERS

EXPRESS VACUUM SYSTEMS

• Nozzle hangers fit 1 $\frac{3}{4}$ " to 2 $\frac{1}{2}$ " O.D. Pole

<b>\$45.09</b>	<b>VCHH15</b>	Fits 1 $\frac{1}{2}$ " Nozzle ONLY	<b>\$42.35</b>	<b>VCHH30</b>	Fits 1 $\frac{1}{2}$ "-2" Claw Crevice Tools
<b>\$6.65</b>	<b>VCHHRPB</b>	Replacement Pad for VCHH15	<b>\$5.42</b>	<b>VCHHRPC</b>	Replacement Pad for VCHH30

### NOZZLES

EXPRESS VACUUM SYSTEMS

1 $\frac{1}{2}$ " PLASTIC NOZZLES		2" PLASTIC NOZZLES	
PRICE	PART #	PRICE	PART #
<b>\$2.15</b>	VAB-15	<b>\$2.15</b>	VAB-20

AVAILABLE IN MANY COLORS - BULK PURCHASING AVAILABLE

### SWIVEL CUFFS

EXPRESS VACUUM SYSTEMS

PRICE	PART #	DESCRIPTION/SIZE	COLOR
<b>\$1.68</b>	VAA-10S	1 $\frac{1}{2}$ " Hose / 1 $\frac{1}{2}$ " Nozzle	Gray

AVAILABLE IN GRAY AND BLACK + MANY SIZE CONFIGURATIONS - SEE BELOW FOR FULL LISTING

### KLEEN-RITE VACUUM HOSES

EXPRESS VACUUM SYSTEMS

1 $\frac{1}{2}$ " x 15' HOSE		2" x 15' HOSE		1 $\frac{1}{2}$ " x 50' HOSE		2" x 25' HOSE		2" x 50' HOSE	
PRICE	PART #	PRICE	PART #	PRICE	PART #	PRICE	PART #	PRICE	PART #
<b>\$20.14</b>	KRVH41	<b>\$26.85</b>	KRVH45	<b>\$64.69</b>	KRVH43	<b>\$41.29</b>	KRVH46	<b>\$82.60</b>	KRVH47

AVAILABLE IN MANY COLORS - SEE THE KLEEN-RITE VACUUM HOSES PAGE IN THE SECTION FOR FULL LISTING!

### REPAIR CUFF

EXPRESS VACUUM SYSTEMS

PRICE	PART #	SIZE	COLOR
<b>\$2.03</b>	VAA-4	1 $\frac{1}{2}$ "	Gray

### HOSE ADAPTER

EXPRESS VACUUM SYSTEMS

PRICE	PART #	SIZE
<b>\$13.45</b>	VCHA150	1 $\frac{1}{2}$ "

### INLET VALVE

EXPRESS VACUUM SYSTEMS

PRICE	PART #	SIZE
<b>\$25.67</b>	VCV500	2" MPT x 1.5" HOSE

### SWIVEL CUFFS

EXPRESS VACUUM SYSTEMS

PRICE	PART #	DESCRIPTION/SIZE	COLOR
<b>\$1.68</b>	VAA-10S	1 $\frac{1}{2}$ " Hose / 1 $\frac{1}{2}$ " Nozzle	Gray
<b>\$1.68</b>	VAA-10SBK	1 $\frac{1}{2}$ " Hose / 1 $\frac{1}{2}$ " Nozzle	Black
<b>\$3.35</b>	VAA-5S	2" Hose / 2" Nozzle	Gray
<b>\$3.35</b>	VAA-5SBK	2" Hose / 2" Nozzle	Black
<b>\$2.89</b>	VAA-19S	2" Hose / 1 $\frac{1}{2}$ " Nozzle	Gray
<b>\$4.14</b>	VAA200-200	2" Hose / 2" Hose • Double Threaded	Gray
<b>\$2.81</b>	VAS22P	2" Hose / 2" Nozzle • With Swivel Nut	Gray
<b>\$3.78</b>	VAA125-125	1 $\frac{1}{4}$ " Hose / 1 $\frac{1}{4}$ " Hose • Double Threaded	Gray
<b>\$3.78</b>	VAA150-150	1 $\frac{1}{2}$ " Hose / 1 $\frac{1}{2}$ " Hose • Double Threaded	Gray
<b>\$4.14</b>	VAA150-200	1 $\frac{1}{2}$ " Hose / 2" Hose • Double Threaded	Gray
<b>\$3.10</b>	VAAC-5	2" Repair Cuff	Gray
<b>\$2.08</b>	VAAC-4	1 $\frac{1}{2}$ " Repair Cuff	Gray
<b>\$1.26</b>	VASN2	2" Swivel Nut	-

New!



### FLASH CUFFS

EXPRESS VACUUM SYSTEMS

PRICE	PART #	DESCRIPTION/SIZE
<b>\$15.39</b>	AH201	Reducer • 2" cuff to 1 $\frac{1}{2}$ " hose
<b>\$12.65</b>	AH204	Female Cuff • 2"
<b>\$10.05</b>	AH206	Male Cuff • 2"

### NOZZLE ADAPTERS

EXPRESS VACUUM SYSTEMS

PRICE	PART #	DESCRIPTION/SIZE	COLOR
<b>\$2.03</b>	VAA-4	1 $\frac{1}{2}$ " Hose / 1 $\frac{1}{2}$ " Nozzle	Gray
<b>\$2.03</b>	VAA-4BK	1 $\frac{1}{2}$ " Hose / 1 $\frac{1}{2}$ " Nozzle	Black
<b>\$2.08</b>	VAA-5	2" Hose / 2" Nozzle	Gray
<b>\$2.46</b>	VAA-19	2" Hose / 1.5" Nozzle	Gray
<b>\$3.54</b>	VAA-5BK	2" Hose / 2" Hose	Black
<b>\$3.54</b>	VAA-15	1 $\frac{1}{2}$ " Hose / 2" Tank	Gray
<b>\$2.15</b>	VAA-15BK	1 $\frac{1}{2}$ " Hose / 2" Tank	Black

### HOSE ADAPTERS & INLET VALVES

EXPRESS VACUUM SYSTEMS

PRICE	PART #	DESCRIPTION/SIZE
<b>\$13.45</b>	VCHA150	1 $\frac{1}{2}$ " hose adapter
<b>\$17.95</b>	VCHA200	2" x 6" hose adapter
<b>\$51.02</b>	VCV520	2" inlet fits 2" pipe thread
<b>\$48.97</b>	VCV520-C	2" inlet with clasp fits 2" pipe thread
<b>\$25.67</b>	VCV500	1 $\frac{1}{2}$ " Inlet with clasp fits 2" pipe thread

# FEATURED PRODUCT

## SWIVEL CUFFS & NOZZLE ADAPTERS



### VAA-10S SWIVEL CUFFS

- 1½" Hose • 1½" Nozzle

**\$1.68** VAA-10S



### VAA-5S SWIVEL CUFFS

- 2" Hose • 2" Nozzle

**\$3.35** VAA-5S



### VAA-19S SWIVEL CUFFS

- 2" Hose • 1½" Nozzle

**\$2.89** VAA-19S



### VAA-10SBK SWIVEL CUFFS

- 1½" Hose • 1½" Nozzle

**\$1.68** VAA-10SBK



### VAA-5SBK SWIVEL CUFFS

- 2" Hose • 2" Nozzle

**\$3.35** VAA-5SBK



### VAA-5BK ADAPTER NOZZLE ADAPTER

- 2" Nozzle

**\$3.54** VAA-5BK



### VAA200-200 SWIVEL CUFFS

- 2" Hose

**\$4.14** VAA200-200



### VAS22P SWIVEL CUFFS

- 2" Hose • 2" Nozzle

**\$2.81** VAS22P

COMES WITH SWIVEL NUT



### 2" SWIVEL NUT SWIVEL CUFFS

**\$1.26** VASN2



### VAA125-125 SWIVEL CUFFS

- 1¼" Hose

**\$3.78** VAA125-125

FOR SHOP VACS



### VAA150-150 SWIVEL CUFFS

- 1½" Hose

**\$3.78** VAA150-150



### VAA150-200 SWIVEL CUFFS

- 1½" Hose • 2" Hose

**\$4.14** VAA150-200



### VAA-4 NOZZLE ADAPTERS

- 1½" Hose • 1½" Nozzle

**\$2.03** VAA-4 Gray  
**\$2.03** VAA-4BK Black



### VAA-5 NOZZLE ADAPTERS

- 2" Hose • 2" Nozzle

**\$2.08** VAA-5



### VAA-19 NOZZLE ADAPTERS

- 2" Hose • 1½" Nozzle

**\$2.46** VAA-19



### VAAC-5 REPAIR CUFFS

- 2"

**\$3.10** VAAC-5



### VAAC-4 REPAIR CUFFS

- 1½"

**\$2.08** VAAC-4

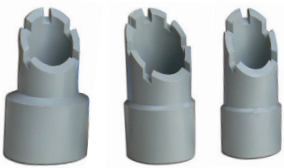


### VAA-15 NOZZLE ADAPTERS

- 1½" Hose • 2" Tank

**\$2.15** VAA-15 Gray  
**\$2.15** VAA-15BK Black

## UPHOLSTERY CUFFS



### VAA UPHOLSTERY CUFFS UPHOLSTERY CUFFS

**\$3.36** VAA-20 2" Hose • 1½" Nozzle  
**\$2.82** VAA-20A 2" Cuff  
**\$1.75** VAA-1 1½" Cuff



### VAN-115 UPHOLSTERY CUFFS

- 2" Hose • 1½" Cuff

**\$3.10** VAN-115



COMES WITH SWIVEL NUT

### VANS-115 UPHOLSTERY CUFFS

- 2" Hose • 1½" Swivel

**\$4.20** VANS-115

## HOSE ADAPTERS & INLET VALVES



### HOSE ADAPTER ADAPTERS & VALVES

- 1½" For Hose & Central Vacuums

**\$13.45** VCHA150



### INLET VALVE ADAPTERS & VALVES

- 2" MPT x 1½" For Hose & Central Vacs

**\$25.67** VCV500

**DON'T SEE EXACTLY WHAT YOU'RE LOOKING FOR?**  
Visit our website for our full selection of vacuum accessories!

# VACUUMS & ACCESSORIES

## VACUUM NOZZLES, TOOLS & ACCESSORIES

BUY A CASE OF 50 VAC NOZZLES FOR THE COST OF \$1.25 A PIECE!



**MRNOZZLE**

### 2" PLASTIC NOZZLE

MR. NOZZLE VACUUM SUPPLIES

\$2.15	VAB-20B	Black	●
\$2.15	VAB-20BL	Blue	●
\$2.15	VAB-20G	Gray	●
\$2.15	VAB-200	Orange	●
\$2.15	VAB-20R	Red	●
\$2.15	VAB-20Y	Yellow	●



**MRNOZZLE**

### 1 1/2" PLASTIC NOZZLE

MR. NOZZLE VACUUM SUPPLIES

\$2.15	VAB-15B	Black	●
\$2.15	VAB-15BL	Blue	●
\$2.15	VAB-15G	Gray	●
\$2.15	VAB-15O	Orange	●
\$2.15	VAB-15R	Red	●
\$2.15	VAB-15Y	Yellow	●



**MRNOZZLE**

### 1 1/2" CREVICE TOOL (16" LONG)

MR. NOZZLE VACUUM SUPPLIES

\$3.30	VACT15	Orange	●
\$3.30	VACT20	Black	●
\$3.30	VACT25	Gray	●



**MRNOZZLE**

### 2" CREVICE TOOL (11" LONG)

MR. NOZZLE VACUUM SUPPLIES

\$3.30	VACT50	Orange	●
\$3.30	VACT55	Black	●
\$2.63	VACT5	Gray	●



**MRNOZZLE**

### CREVICE CLAWS

MR. NOZZLE VACUUM SUPPLIES

- Allows customers to clean their car thoroughly by combining the claw nozzle and the crevice tool!

\$4.32	VACT150	1 1/2"
\$4.32	VACT200	2"



**MRNOZZLE**

### 1 1/2" x 24" LONG VAC NOZZLE

MR. NOZZLE VACUUM SUPPLIES

\$4.74	VAB-15LBL
--------	-----------



VCHH30

### VAC NOZZLE HANGERS

MR. NOZZLE VACUUM SUPPLIES

- Both fit 1 3/4" to 2 1/2" O.D. Pole

\$45.09	VCHH15	Fits 1 1/2" Nozzle ONLY
\$6.65	VCHHRPB	Replacement Pad for VCHH15
\$42.35	VCHH30	Fits 1 1/2"-2" Claw Crevice Tools
\$5.42	VCHHRPC	Replacement Pad for VCHH30

**MRNOZZLE**



**MRNOZZLE**

### VAC TOOL KIT

MR. NOZZLE VACUUM SUPPLIES

#### KIT INCLUDES:

- 12' hose
- 1 1/2" nozzle w/black cuff
- 1 1/2" swivel cuff
- For use with wet/dry vacs
- Claw & crevice tool

\$30.64	VACTK
---------	-------



### 15" L x 1 1/2" METAL CREVICE TOOL

VACUUM SUPPLIES

\$8.21	VACTM15
--------	---------



### ALUMINUM CLAW WITH SWIVEL CUFF

VACUUM SUPPLIES

\$27.35	GS20237	2" Aluminum Claw
\$32.94	GS20256	1 1/2" Aluminum Claw



### ERIE VAC NOZZLES

ERIE BRUSH VACUUM SUPPLIES



PRICE	PART #	DESCRIPTION
\$3.50	EB811500	1 1/2" Hose Black Plastic Vac Nozzle 13" Long
\$4.40	EB811700	1.5" Hose Black Plastic Vac Nozzle 24" Long
\$3.28	EB812500	2" Hose Black Plastic Vac Nozzle 9" Long
\$3.28	EB812700	2" Hose Black Plastic Vac Nozzle 14"
\$4.54	EB811502	1 1/2" Hose Yellow SUPER Plastic Vac Nozzle 13" Long
\$4.54	EB811502	1 1/2" Hose Yellow SUPER Plastic Vac Nozzle 24" Long
\$4.54	EB812502	2" Hose Yellow SUPER Plastic Vac Nozzle 9" Long
\$4.54	EB812702	2" Hose Yellow SUPER Plastic Vac Nozzle 14" Long

# VACUUMS & ACCESSORIES

## VACUUM HOSES AND PARTS

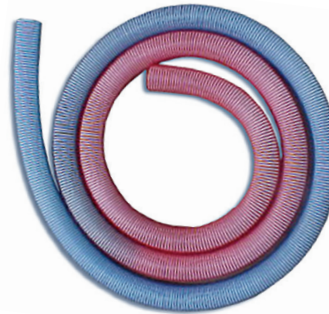


**50' x 2"  
VAC HOSE**  
VACPRO VACUUM HOSES

**PLASTIFLEX**  
Hose System Solutions

- Flexible & light weight!

VAK47G	Gray
VAK47R	Red
VAK47BY	Yellow
<b>QTY. OF ONE &amp; UP \$91.00</b>	



**RED, WHITE & BLUE  
VAC HOSE**

VACPRO VACUUM HOSES

**PLASTIFLEX**  
Hose System Solutions



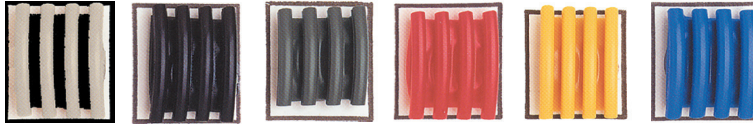
**RAINBOW  
VAC HOSE**

VACPRO VACUUM HOSES

**PLASTIFLEX**  
Hose System Solutions

**\$28.53** VAK45RWB 2" x 15'

**\$41.54** VAK45RB 2" x 16'



**15' x 2" VAC HOSE**

VACPRO VACUUM HOSES

**PLASTIFLEX**  
Hose System Solutions

- Flexible & light weight!

VAK45BE/BK	Beige/Black
VAK45BK	Black
VAK45BL	Blue
VAK45G	Gray
VAK45R	Red
VAK45BY	Yellow
VAK45BK/BL	Black/Blue
VAK45BL/BK	Blue/Black
VAK45BL/R	Blue/Red
VAK45BY/BK	Yellow/Black
VAK45BY/R	Yellow/Red
VAK45G/BK	Gray/Black
VAK45GG	Green
VAK45GG/BK	Green/Black

**QTY OF 1-6 \$28.57**  
**BOX OF 7 \$27.03**

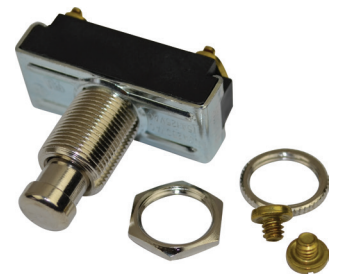
VAK45NL/BK	Neon Lime/Black
VAK45NL/BL	Neon Lime/Blue
VAK45OR	Orange
VAK45OR/BK	Orange/Black
VAK45P	Purple
VAK45P/BY	Purple/Yellow
VAK45R/BK	Red/Black
VAK45R/BL	Red/Blue
VAK45T	Teal
VAK45T/BK	Teal/Black
VAK45TQ/BK	Turquoise/Black

**QTY OF 1-6 \$28.49**  
**BOX OF 7 \$26.71**



**JIM COLEMAN® PUSH BUTTON  
FOR COMBO VACUUMS**  
VACUUM ACCESSORIES

**\$12.63** VAC225



**DILLING & HARRIS PUSH BUTTON  
SWITCH FOR COMBO VACS**  
VACUUM ACCESSORIES

**\$11.48** ST0150

**15' x 1½" VAC HOSE**

VACPRO VACUUM HOSES

VAK41G	Gray
VAK41G/BK	Gray/Black
VAK41BK	Black
VAK41BL	Blue
VAK41BL/BK	Blue/Black
VAK41BL/R	Blue/Red
VAK41BL/Y	Blue/Yellow
VAK41BY/BK	Yellow/Black
VAK41GG	Grass Green
VAK41OR	Orange
VAK41OR/BK	Orange/Black
VAK41PR	Purple
VAK41R	Red
VAK41R/BK	Red/Black
VAK41R/BL	Red/Blue
VAK41T	Teal

**QTY OF 1-9 \$23.55**  
**BOX OF 10 \$21.70**

**50' x 1½" VAC HOSE**

KLEEN-RITE VACUUM HOSES

VAK43G	Gray
VAK43BK	Black
VAK43BL	Blue
VAK43BY	Bright Yellow
VAK43G/BK	Gray/Black
VAK43GG	Grass Green
VAK43OR	Orange
VAK43P	Purple
VAK43R	Red
VAK43R/BK	Red/Black
VAK43R/BL	Red/Blue

**\$87.42**



**THE DUALER**  
VACUUM ACCESSORIES

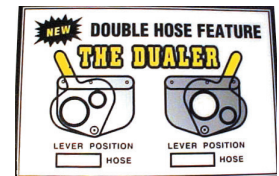
- Provide customers with a new 2-option vacuum (conventional or crevice tool) 2" or 1½"
- Easily adapts to existing vacuum, increases vacuum revenue

**\$125.66** DUALER

DE15092	Multi-color kit
DE15094	Hang Red Hose Here
DE15095	Hang Blue Hose Here
DE15096	Hang Gray Hose Here
DE15097	Hang Black Hose Here



ORDER DECALS SEPARATELY



ORDER DECALS SEPARATELY

TO WATCH OUR VIDEO ON THE DUALER: VISIT OUR WEBSITE, OR SIMPLY SCAN THIS HANDY QR CODE WITH YOUR HAND-HELD MOBILE DEVICE:



# VACUUMS & ACCESSORIES

## VACUUM HOSES



### KLEEN-RITE DURA-SLIDE PREMIUM VACUUM HOSE

VACUUM HOSES

- Inner lining provides smooth air flow
- Durable construction and crush resistant design



DSH41BL/BK

DSH43R/BK

1½" x 15' HOSE		
\$20.32	DSH41BL/BK	Blue/Black
\$20.32	DSH41BK	Black
\$20.32	DSH41G	Gray
\$20.32	DSH41R/BK	Red/Black

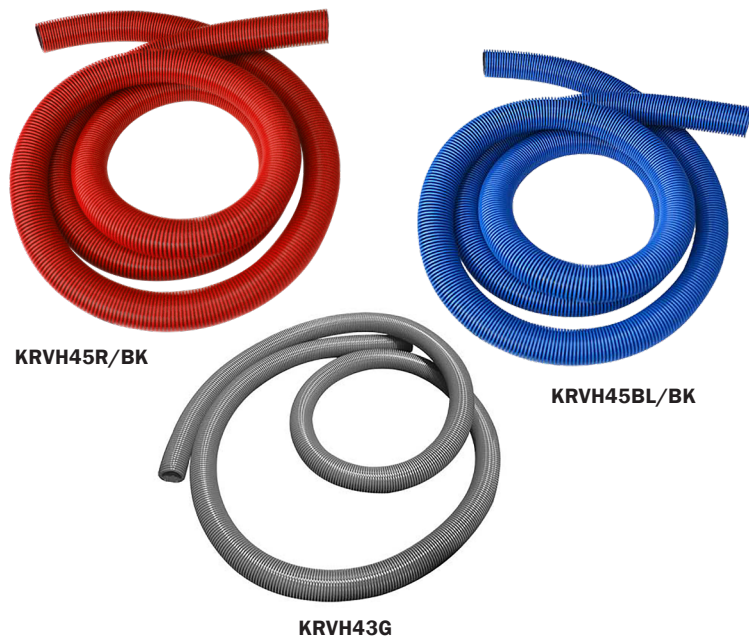
2" x 15' HOSE		
\$25.50	DSH45BL/BK	Blue/Black
\$25.50	DSH45BK	Black
\$25.50	DSH45G	Gray
\$25.50	DSH45R/BK	Red/Black

**New!**

1½" x 15' 2" HOSE		
\$24.92	DTH45R/BK	Red/Black
\$24.92	DTH45R	Red
\$24.92	DTH45G/BK	Gray/Black
\$24.92	DTH45G	Gray
\$24.92	DTH45BL/BK	Blue/Black
\$24.92	DTH45BL	Blue
\$24.92	DTH45BK	Black

1½" x 50' HOSE		
\$67.74	DSH43BL/BK	Blue/Black
\$67.74	DSH43BK	Black
\$67.74	DSH43G	Gray
\$67.74	DSH43R/BK	Red/Black

2" x 50' HOSE		
\$85.00	DSH47BL/BK	Blue/Black
\$85.00	DSH47BK	Black
\$85.00	DSH47G	Gray
\$85.00	DSH47R/BK	Red/Black



KRVH45R/BK

KRVH45BL/BK

KRVH43G

### KLEEN-RITE VACUUM HOSE

VACUUM HOSES



- Cost-efficient option for vacuums
- Made in the USA

1½" x 15' HOSE		
\$20.14	KRVH41BL/BK	Blue/Black
\$20.14	KRVH41G	Gray
\$20.14	KRVH41Y	Yellow
\$20.14	KRVH41Y/BK	Yellow/Black
\$20.14	KRVH41BK	Black
\$20.14	KRVH41BL	Blue
\$20.14	KRVH41R	Red
\$20.14	KRVH41R/BK	Red/Black

2" x 15' HOSE		
\$26.85	KRVH45BK	Black
\$26.85	KRVH45BL	Blue
\$26.85	KRVH45BL/BK	Blue/Black
\$26.85	KRVH45G	Gray
\$26.85	KRVH45R	Red
\$26.85	KRVH45R/BK	Red/Black
\$26.85	KRVH45Y/BK	Yellow/Black

1½" x 50' HOSE		
\$64.69	KRVH43R	Red
\$64.69	KRVH43BL/BK	Blue/Black
\$64.69	KRVH43G	Gray
\$64.69	KRVH43R/BK	Red/Black
\$64.69	KRVH43BK	Black
\$64.69	KRVH43BL	Blue

2" x 25' HOSE		
\$41.29	KRVH46BK	Black
\$41.29	KRVH46BL	Blue
\$41.29	KRVH46G	Gray
\$41.29	KRVH46R	Red

2" x 50' HOSE		
\$82.60	KRVH47BK	Black
\$82.60	KRVH47BL	Blue
\$82.60	KRVH47BL/BK	Blue/Black
\$82.60	KRVH47G	Gray
\$82.60	KRVH47R	Red
\$82.60	KRVH47R/BK	Red/Black

### TAPERED VACUUM HOSE

VACUUM HOSES

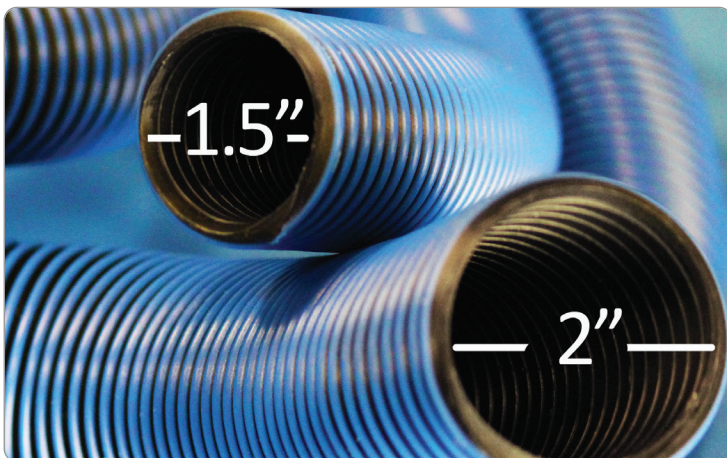


- KR tapered vacuum hoses are an excellent choice for car washes. Even as it's pulled to and from different cars, it resists snagging and is non-abrasive. Offering superior flexibility, it's great to run across the upholstery of any vehicle's interior. Nozzle not included with hose.
- 2" diameter to one end & 1½" on the other
- Easier to handle, reduced obstructions!
- 15' total length

VTH45BK/BK	Black
VTH45BL/BK	Blue/Black
VTH45G/BK	Gray/Black
VTH45R/BK	Red/Black
<b>\$33.91</b>	

VTH45R/R	Red
VTH45BL/BL	Blue
<b>\$33.91</b>	

**NOZZLE NOT INCLUDED WITH HOSE**



# VACUUMS & ACCESSORIES

## THE VACUUM PROSPECTOR



**THE PROSPECTOR  
VACUUM CLEAN  
OUT CANISTER**  
VACUUM PROSPECTOR, LLC



You'll hit literal pay dirt after installing The Vacuum Prospector Clean Out Bucket! Ever stop and think about how much stuff gets sucked up by your car wash vacuums? Maybe you've even looked at all the various bits of debris when you clean out the canisters. While your vacuums are sucking up dirt, dog hair, and stale french fries, the vacs are also gobbling up errant coins that have fallen underneath your customers' seats. This means you are actually throwing away money each time you empty a vacuum!

The Vacuum Prospector Clean Out Bucket is an easy solution. It was developed by a car wash owner who was curious about the amount of coins lost to vacuums each year. After installing his prototype in vacuums, he was able to catch over \$400 in loose coins over the course of 6 months! The Vacuum Prospector has a unique design utilizing a false bottom and 162 individual holes. Each hole is slightly smaller than a dime, so no coins will escape.

Simply place the Clean Out Bucket inside your vacuum. When full, remove the bucket and unlatch the false bottom, exposing the unit's holes. Dirt, dust, lint, and other small debris will fall through the holes, leaving coins behind! It's like panning for gold - at your car wash.

- Out of the box compatibility with J.E. Adams vacuums
- False bottom keeps debris contained until you are ready to sift
- Each of the 162 holes is smaller than a dime so money will not escape
- Earn hundreds of dollars every year in coins that would have been thrown away!
- Triple handle design enables you to be hands on with the bucket, not the dirt
- Weight: 4 lbs.
- Dimensions: 18¾" Diameter, 7¼" Tall

**\$46.99**

**VACP**

**MADE BY A CAR WASH OWNER FOR CAR WASH OWNERS!**

## BINS, CLEAN OUT BAGS & CANISTERS



### OVAL VACUUM DIRT BIN

J.E. ADAMS

- Replacement dirt bin for oval J.E. Adams vacuums
- Durable Gray plastic
- 17.4" L x 10.65" W x 11.9" H

**\$59.79**

**VAA8920-4**



### J.E. ADAMS CLEAN OUT BAG

J.E. ADAMS

- Use with J.E. Adams commercial car wash vacuums
- Black vinyl material

**\$44.83**

**VAA8599**



### VINYL CLEAN OUT BAG FOR DOYLE/IVS

GINSAN

- 18" diameter
- Manufactured for Doyle and IVS vacuum systems
- Black vinyl material

**\$30.17**

**VAD1030**



### ADJUSTABLE CLEAN OUT BAG

CLEAN OUT BAGS

- Adjustment range from 18" to 20"
- Use with various commercial vacuum models, including J.E. Adams units

**\$19.75**

**VA40011**



### RUBBER VAC DIRT CANISTER

HAMEL MANUFACTURING CO.

**\$44.96**

**VDC10**



### VACUUM BAG BRUSH

ERIE BRUSH

- Polypropylene bristles - 8" diameter
- Extend filter bag use by breaking loose debris and objects
- ¾" MPT for attachment to handles and extension rods

**\$30.84**

**EB887901**



# VACUUMS & ACCESSORIES

## DOOR GASKETS & FILTER BAGS

### DOOR GASKETS

VACUUM SUPPLIES



VA30049



VAGC100



VAD1040



VA8159

PRICE	PART #	DESCRIPTION	DIMENSIONS
\$8.15	VAD1040	IVS/Doyle	16" x 12" gasket, 61/4" circle cutout, 3/8" thick
\$4.52	VA8159	Adams/KR	11 3/4" x 14 3/4" O.D. 9 1/2" x 12" I.D. (adhesive on 1 side)
\$12.80	VA30049	1 pc. door Gasket G-2 vac	22" x 16" (adhesive on 1 side)
\$9.20	VAGC100	Coleman	3/16" thick, 12 x 17 3/8"

### FILTER BAGS

VACUUM SUPPLIES



VA40010



VAD1000



VA30194



VA30041



VAA8074



VAM30042



FMCP011



VADHMV

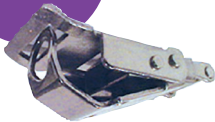


VAC200

PRICE	PART #	DESCRIPTION
\$10.09	VA40010	2/vac KR/Adams - 5 3/8" dia x 23 1/2" L (10 3/4" Flat)
\$14.57	VAD1000	Doyle/Industrial (4/vac) - 7" dia x 21 1/2" L
\$32.20	VA30194	G-2 (rectangular) (3/vac) - 10" L x 5" W x 21" L
\$18.67	VA30041	Old style Monorail (4/vac) - 7" dia x 26 1/2" L with super seal bottom, disc top with 1/2" strap
\$18.63	VAA8074	9200 Super Vac - 6 3/4" dia x 23" L
\$9.99	VAM30042	Monorail Tempest - Nap Filter Bags 6 7/8" dia x 23 1/2" long with hem & ring top, disc w/2 loops & ring bottom
\$16.97	FMCP011	Fragramatics Combo Machine (4/vac) 7" dia x 17 3/4" L
\$19.02	VADHMV	D&H Maxi-vac (5/vac) - 7" dia x 22" L
\$16.33	VAC200	Coleman Replacement Bag - 6 1/2" dia x 23 1/2" L

## VACUUM LATCHES

FOR J.E. ADAMS



DOOR CLASP - HINGE ONLY  
VACUUM LATCHES

\$6.98 VA40028



STRIKER  
VACUUM LATCHES

\$1.59 VA40029



LOOP ONLY IVS/DOYLE  
VACUUM LATCHES

\$2.02 VAI104701



LATCH WITH LOOP IVS/DOYLE  
VACUUM LATCHES

\$8.98 VAI104706



OLD STYLE DOOR CATCH 2 PIECE (MONORAIL/NAT'L STYLES)  
VACUUM LATCHES

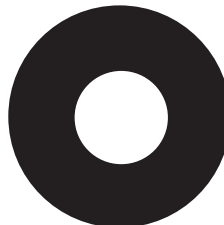
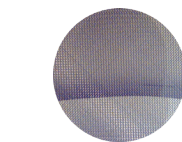
\$5.38 VA30039

## FUSES



PRICE	PART #	DESCRIPTION
\$3.29	VAA5979D1	20 Amp Fuse
\$2.95	VAA5979D2	10 Amp Fuse
\$6.33	VAA5979D4	30 Amp Fuse
\$3.06	VAAB5996010	10 Amp Inline Fuse
\$4.42	VAAB5997001	Fuse Holder

## MOTOR GASKETS



PRICE	PART #	DESCRIPTION	DIMENSIONS
\$1.14	VAGS036	Doyle/IVS	5" O.D. 2" I.D.
\$1.02	VA40021	Motor Bushing Gasket (8063) Adams/KR	6" O.D. 5" I.D. 1/4" Thick
\$1.14	VA40020	Motor Gasket Adams/KR (8057)	5 1/2" O.D. 4" I.D. 1/4" Thick
\$1.78	VAI106800	Screen for Intake Motor	-

# VACUUMS & ACCESSORIES

## FRAGRAMATICS® REPLACEMENT PARTS - MODEL EVD-2/EVD-3 FRAGRANCE DISPENSER



**EVD DOOR DECAL**  
FRAGRAMATICS

**\$50.66** FMDOR011



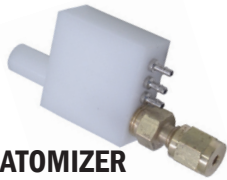
**EVD-2 HOSE & HANDLE ASSEMBLY**  
FRAGRAMATICS

**\$130.35** FMCAB018



**EVD-3 HOSE & HANDLE ASSEMBLY**  
FRAGRAMATICS

**\$131.46** FMCAB038



**ATOMIZER**  
FRAGRAMATICS

**\$38.58** FMVAC043



**BRUSH WITH GASKET**  
FRAGRAMATICS

**\$21.69** FMVAC076



**FERRULES**  
(SOLD INDIVIDUALLY)  
FRAGRAMATICS

**\$2.72** FMCHA010



**PICK-UP FOOT**  
FRAGRAMATICS

**\$1.55** FMCHA018



**FRAGRANCE VALVE**  
FRAGRAMATICS

**\$70.64** FMCHA005



**1/2 GALLON JUG**  
FRAGRAMATICS

**\$4.59** FMCAB045



## FRAGRAMATICS® REPLACEMENT PARTS - MODEL FV-3 VAC COMBO



**VAC DOOR GASKET**  
FRAGRAMATICS

**\$24.20** FMVAC032



**1/2 GALLON JUG**  
FRAGRAMATICS

**\$4.59** FMCAB045



**FRAGRANCE VALVE**  
FRAGRAMATICS

**\$70.64** FMCHA005



**VISUAL FLUID SET**  
FRAGRAMATICS

**\$14.67** FMVAC087



**PICK-UP TUBES**  
FRAGRAMATICS

**\$8.65** FMVAC106



**CIRCULAR BULB**  
FOR DOME LIGHT  
FRAGRAMATICS

**\$38.81** FMVAC231



**PUSH BUTTON FOR**  
FRAGRANCE HANDLE  
FRAGRAMATICS

**\$15.49** FMVAC110



**HOSE ASSEMBLY**  
NO BRUSH & HANDLE  
FRAGRAMATICS

**\$83.52** FMVAC053



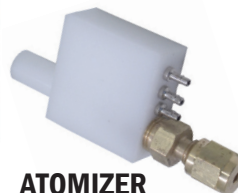
**HOSE & HANDLE**  
ASSEMBLY  
FRAGRAMATICS

**\$147.75** FMVAC049



**LEXAN FACEPLATE**  
FRAGRAMATICS

**\$24.73** FMDOR009



**ATOMIZER**  
FRAGRAMATICS

**\$38.58** FMVAC043



**24V SOLID STATE RELAY**  
FRAGRAMATICS

**\$79.27** FMVAC169



**PICK-UP FOOT**  
FRAGRAMATICS

**\$1.55** FMCHA018



**FERRULES**  
(SOLD INDIVIDUALLY)  
FRAGRAMATICS

**\$2.72** FMCHA010



**MOTOR FUSE**  
(ABC 10 AMP)  
FRAGRAMATICS

**\$1.09** FMVAC027



**15 AMP FNM FUSES**  
FRAGRAMATICS

**\$17.37** FMVAC059



**25 AMP FNM FUSES**  
FRAGRAMATICS

**\$18.20** FMVAC060



**30 AMP FNM FUSES**  
FRAGRAMATICS

**\$17.37** FMVAC058

# VACUUMS & ACCESSORIES

## FRAGRAMATICS® REPLACEMENT PARTS - CCD SHAMPOO MACHINE



**FERRULES (SOLD INDIVIDUALLY)**  
FRAGRAMATICS

**\$2.72** FMCHA010



**PICK-UP FOOT**  
FRAGRAMATICS

**\$1.55** FMCHA018



**BRUSH WITH GASKET**  
FRAGRAMATICS

**\$21.69** FMVAC076



**COMPLETE HOSE & BRUSH ASSEMBLY**  
FRAGRAMATICS

**\$195.56** FMCCD014



**ON/OFF TOGGLE SWITCH**  
FRAGRAMATICS

**\$14.63** FMVAC074



Car wash fragrance machines are a great choice for earning more revenue. Car wash customers are now looking for car washes that have fragrance machines. Keep yours up-to-date and properly maintained with the right parts!

The more options the better! Giving the customer more choices with your fragrance and shampoo machines will keep them satisfied. Stand-alone car wash shampoo machines are perfect for increasing the length of time a customer spends at your location and are perfect for maintaining your customer's cars. Making sure they are fully kitted with the proper parts and accessories is the best way to extend your unit's service life.

## FRAGRAMATICS® REPLACEMENT PARTS - MODEL SVSR & SVSR-P VAC COMBO



**MOTOR FUSE (ABC 10 AMP)**  
FRAGRAMATICS

**\$1.09** FMVAC027



**15 AMP FNM FUSES**  
FRAGRAMATICS

**\$17.37** FMVAC059



**25 AMP FNM FUSES**  
FRAGRAMATICS

**\$18.20** FMVAC060



**30 AMP FNM FUSES**  
FRAGRAMATICS

**\$17.37** FMVAC058



**FERRULES (SOLD INDIVIDUALLY)**  
FRAGRAMATICS

**\$2.72** FMCHA010



**PICK-UP FOOT**  
FRAGRAMATICS

**\$1.55** FMCHA018



**BRUSH W/ GASKET**  
FRAGRAMATICS

**\$21.69** FMVAC076



**VAC DOOR GASKET**  
FRAGRAMATICS

**\$24.20** FMVAC032



**HOSE ASSEMBLY NO BRUSH & HANDLE**  
FRAGRAMATICS

**\$90.25** FMVAC080



**CIRCULAR BULB FOR DOME LIGHT**  
FRAGRAMATICS

**\$38.81** FMVAC231



**PUMP TUBES**  
FRAGRAMATICS

**\$14.31** FMVAC081 Spot Remover  
**\$14.31** FMVAC082 Shampoo



**ON/OFF TOGGLE SWITCH**  
FRAGRAMATICS

**\$14.63** FMVAC074



**PICK-UP TUBING COMPLETE SET**  
FRAGRAMATICS

**\$38.54** FMVAC056



**24V SOLID STATE RELAY**  
FRAGRAMATICS

**\$79.27** FMVAC169



**FOAM GENERATOR**  
FRAGRAMATICS

**\$56.99** FMVAC079

# VACUUMS & ACCESSORIES

## FRAGRAMATICS® REPLACEMENT PARTS - QUADRA SELECT-A-VAC



**FRAGRAMATICS**



**FERRULES**  
(SOLD INDIVIDUALLY)  
FRAGRAMATICS

**\$2.72** FMCHA010



**PICK-UP FOOT**  
FRAGRAMATICS

**\$1.55** FMCHA018



**ON/OFF TOGGLE SWITCH**  
FRAGRAMATICS

**\$14.63** FMVAC074



**BRUSH W/ GASKET**  
FRAGRAMATICS

**\$21.69** FMVAC076



**CIRCULAR BULB FOR DOME LIGHT**  
FRAGRAMATICS

**\$38.81** FMVAC231



WITH  
PUSH  
BUTTON

**HOSE & HANDLE ASSEMBLY**  
FRAGRAMATICS

**\$147.75** FMVAC049



**PICK-UP TUBES**  
FRAGRAMATICS

**\$8.65** FMVAC106



**COMPLETE HOSE & BRUSH ASSEMBLY**  
FRAGRAMATICS

**\$206.44** FMVAC077



**FRAGRANCE VALVE**  
FRAGRAMATICS

**\$70.64** FMCHA005



**VAC DOOR GASKET**  
FRAGRAMATICS

**\$24.20** FMVAC032



**PUSH BUTTON FOR FRAGRANCE HANDLE**  
FRAGRAMATICS

**\$15.49** FMVAC110



**SPOT REMOVER TUBE**  
FRAGRAMATICS

**\$14.31** FMVAC081

## FRAGRAMATICS® REPLACEMENT PARTS - SAV SELECT-A-VAC



**FRAGRAMATICS**



**24V SOLID STATE RELAY**  
FRAGRAMATICS

**\$79.27** FMVAC169



**VISUAL FLUID SET**  
FRAGRAMATICS

**\$14.67** FMVAC087



**PICK-UP TUBES**  
FRAGRAMATICS

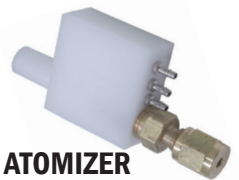
**\$8.65** FMVAC106



WITH  
PUSH  
BUTTON

**HOSE & HANDLE ASSEMBLY**  
FRAGRAMATICS

**\$147.75** FMVAC049



**ATOMIZER**  
FRAGRAMATICS

**\$38.58** FMVAC043



**VAC DOOR GASKET**  
FRAGRAMATICS

**\$24.20** FMVAC032



**CIRCULAR BULB FOR DOME LIGHT**  
FRAGRAMATICS

**\$38.81** FMVAC231



**COMPLETE HOSE & BRUSH ASSEMBLY**  
FRAGRAMATICS

**\$206.44** FMVAC077



**FRAGRANCE SOLENOID**  
FRAGRAMATICS

**\$70.64** FMCHA005



**ON/OFF TOGGLE SWITCH**  
FRAGRAMATICS

**\$14.63** FMVAC074



**BRUSH W/ GASKET**  
FRAGRAMATICS

**\$21.69** FMVAC076



**MOTOR FUSE (ABC 10 AMP)**  
FRAGRAMATICS

**\$1.09** FMVAC027

# VACUUMS & ACCESSORIES

## FRAGRANCES

### FRAGRAMATICS® AUTO FRAGRANCES



**BLUE LABEL & GREEN LABEL WATER BASED FRAGRANCES**

WATER BASE	FRAGRANCE	OIL BASE
VSCFB003	Cinnamon	VSAFG003
VSCFB033	Citrus	VSAFG033
VSCFB026	Fresh-N-Clean	VSAFG026
VSCFB044	Ice	VSAFG044
VSCFB008	Jasmine	VSAFG008
VSCFB028	Leather	VSAFG028
VSCFB009	Lemon Lime	VSAFG009
VSCFB011	New Car	VSAFG011
VSCFB042	Orange Blast	VSAFG042
VSCFB014	Peach	VSAFG014
VSCFB015	Piña Colada	VSAFG015
VSCFB016	Pine Mist	VSAFG016
VSCFB021	Strawberry	VSAFG021
VSCFB029	Tropical Fruit	VSAFG029
VSCFB022	Vanilla	VSAFG022
VSCFB023	Wild Cherry	VSAFG023
<b>\$22.50</b>		<b>\$30.50</b>



### FRAGRAMATICS® SHAMPOO & SPOT REMOVERS

<b>\$14.00</b>	VS750	Summer Shampoo - Ready to Use
<b>\$25.96</b>	VS825	Winter Shampoo
<b>\$14.56</b>	VS900	Spot Remover/ Summer Shampoo
<b>\$25.96</b>	VS975	Concentrated Shampoo
<b>\$17.77</b>	VS980	Spot Remover



### WATER-BASED FRAGRANCE

KLEEN-SCENT AUTO FRAGRANCES



- Water-based, non-flammable formula
- Available in 1 & 5 Gallon
- Freeze-proof to ~30°F

**PRIVATE LABEL NOW AVAILABLE**

**ALSO AVAILABLE IN 5 GALLON**

### OIL-BASED FRAGRANCE

KLEEN-SCENT AUTO FRAGRANCES



- Oil-based fragrance formula - will not stain
- Available in 1 & 5 Gallon
- Freeze-proof to ~0°F

**PRIVATE LABEL NOW AVAILABLE**

**ALSO AVAILABLE IN 5 GALLON**

LARGE

**LEATHER**

SMALL

**PIÑA COLADA**

FRAGRANCE	WATER BASE	OIL BASE	SMALL LABEL (2½" X ½")	LARGE LABEL (3½" X 5/8")
Wild Cherry	VSKB1001	VSKG1001	VE0109WC	VE0110WC
Piña Colada	VSKB1002	VSKG1002	VE0109PC	VE0110PC
Lemon	VSKB1003	VSKG1003	VE0109LL	VE0110LL
Musk	VSKB1004	-	VE0109M	VE0110M
Pine Mist	VSKB1005	VSKG1005	VE0109PM	VE0110PM
New Car	VSKB1006	VSKG1006	VE0109NC	VE0110NC
Strawberry	VSKB1007	VSKG1007	VE0109S	VE0110S
Spice Lite	VSKB1008	VSKG1008	VE0109SL	VE0110SL
Spearmint	VSKB1009	VSKG1009	VE0109SP	VE0110SP
Cinnamon	VSKB110	VSKG110	VE0109CN	VE0110CN
Baby Powder	VSKB111	VSKG111	VE0109BP	VE0110BP
Jasmine	VSKB112	VSKG112	VE0109J	VE0110J
Vanilla	VSKB115	VSKG115	VE0109V	VE0110V
Apple Blossom	VSKB117	-	VE0109AB	VE0110AB
Tropical Fruit	VSKB113	VSKG113	VE0109TF	VE0110TF
Fresh-N-Clean	VSKB115	VSKG115	VE0109FC	VE0110FC
Leather	VSKB1126	VSKG1126	VE0109L	VE0110L
Peach	VSKB1127	VSKG1127	VE0109P	VE0110P
Citrus	VSKB1129	VSKG1129	VE0109C	VE0110C
Spring Floral	VSKB1131	VSKG1131	VE0109SF	VE0110SF
Night Frost	VSKB1132	VSKG1132	VE0109NF	VE0110NF
<b>PRICE</b>	<b>\$12.71</b>	<b>\$19.61</b>	<b>\$0.25</b>	<b>\$0.42</b>

## CARPET MACHINE SHAMPOOS

### KLEEN-RITE CARPET MACHINE SHAMPOOS

**5 GALLON BEST VALUE!**



RTU = Ready To Use

<b>\$7.95</b>	<b>VSK750</b>	1 Gallon - RTU	Summer Shampoo	<b>\$11.65</b>	<b>VSK910</b>	1 Gallon - RTU	Summer Carpet Protectant
<b>\$12.72</b>	<b>VSK975</b>	1 Gallon - Makes 6 Gallons	Summer Concentrate	<b>\$16.38</b>	<b>VSK915</b>	1 Gallon - RTU	Winter Carpet Protectant
<b>\$11.54</b>	<b>VSK980</b>	1 Gallon - RTU	Summer Spot Remover	<b>\$34.72</b>	<b>VSK5750</b>	5 Gallon - RTU	Summer Carpet Shampoo
<b>\$10.34</b>	<b>VSK900</b>	1 Gallon - RTU	Summer Shampoo Plus Spot Remover	<b>\$56.18</b>	<b>VSK5825</b>	5 Gallon - RTU	Winter Shampoo
<b>\$13.70</b>	<b>VSK905</b>	1 Gallon - RTU	Winter Spot Remover - Good to 5°F	<b>\$49.08</b>	<b>VSK5975</b>	5 Gallon - Makes 30 Gallons	Summer Shampoo Concentrate
<b>\$14.40</b>	<b>VSK825</b>	1 Gallon - RTU	Winter Shampoo - Good to 5°F	<b>\$91.00</b>	<b>VSK5WC</b>	5 Gallon - Makes 30 Gallons	Winter Shampoo Concentrate
<b>\$25.50</b>	<b>VSKWC</b>	1 Gallon - Makes 4 Gallons	Winter Concentrate - Good to 5°F	<b>\$46.63</b>	<b>VSK5980</b>	5 Gallon - RTU	Spot Remover

# VACUUMS & ACCESSORIES

## KLEEN-RITE VACUUM MOTORS

TOP  
SELLER!



### VMK19 VAC MOTOR

KLEEN-RITE MOTORS

**KLEEN-RITE**.com

- 120 Volt AC, 2-stage vacuum motor
- Wound, tested, and assembled in the USA
- 89" of water sealed vacuum (typical)
- 9" power leads with quick-connect terminals
- UL / CUL Listed & RoHS / REACH compliant
- 5.7" bypass, peripheral exhaust configuration
- 308 peak air watts (typical)
- 101 Cubic Feet per Minute open flow (typical)
- Double ball bearing for added durability

**\$38.10** VMK19

### KLEEN-RITE VAC MOTOR BRUSH REPLACEMENT KIT

KLEEN-RITE MOTORS

- 2 replacement brush assemblies
- Brush replacement gauge
- Instruction sheet for changing brushes

**\$5.64** VMKBRUSH



### HAVE YOU HEARD...

The Kleen-Rite branded vacuum motors are wound, tested, and assembled in the USA and have been for nearly 20 years. A staple in many commercial vacuum applications, the Kleen-Rite vacuum motor offers the right balance of price, quality, performance and service. everything that makes for the preferred choice over other imported brands in the industry.



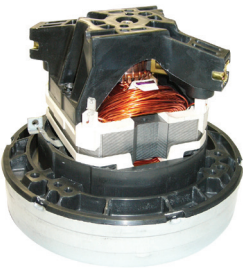
### VMK6565

KLEEN-RITE MOTORS

**KLEEN-RITE**.com

- 120 Volt AC, 3-stage vacuum motor
- Wound, tested, and assembled in the USA
- 127" of water sealed vacuum (typical)
- Patented bearing moisture protection
- Double ball bearing for added durability
- 5.7" bypass, tangential exhaust configuration
- 430 peak air watts (typical)
- 99 Cubic Feet per Minute open flow (typical)
- 9" power leads with quick-connect terminals
- UL / CUL Listed & RoHS / REACH compliant

<b>\$92.48</b>	<b>VMK6565</b>	Motor
<b>\$5.96</b>	<b>VMKBRUSH</b>	Brush



### VMK6309

KLEEN-RITE MOTORS

**KLEEN-RITE**.com

- 120 Volt AC, 1-stage vacuum motor
- Wound, tested, and assembled in the USA
- 72" of water sealed vacuum (typical)
- 9" power leads with quick-connect terminals
- UL / CUL Listed & RoHS / REACH Compliant
- 5.7" thru-flow configuration
- 269 peak air watts (typical)
- 111 Cubic Feet per Minute open flow (typical)
- Double ball bearing for added durability

<b>\$50.94</b>	<b>VMK6309</b>	Motor
<b>\$5.96</b>	<b>VMKBRUSH</b>	Brush



USE WITH  
AIR  
SHAMMY!

### VMK4MP

KLEEN-RITE MOTORS

**KLEEN-RITE**.com

- 120 Volt AC, 2-stage vacuum motor
- 5.7" bypass, tangential exhaust configuration
- 441 peak air watts (typical)
- 106 Cubic Feet per Minute open flow (typical)
- 9" power leads with quick-connect terminals
- UL / CUL Listed & RoHS / REACH compliant
- Optional 220-240 Volt AC version available
- Wound, tested and, assembled in the USA
- 112" of water sealed vacuum (typical)
- Patented bearing moisture protection
- Double ball bearing for added durability

<b>\$66.05</b>	<b>VMK4MP</b>	120V	<b>\$67.24</b>	<b>VMK5MP</b>	220V
<b>\$5.96</b>	<b>VMKBRUSH</b>	Brush	<b>\$6.90</b>	<b>VMKB1015</b>	Brush

# VACUUMS & ACCESSORIES

## KLEEN-RITE VACUUM MOTORS



### VMK6765

KLEEN-RITE MOTORS

**KLEEN-RITE**<sup>corp</sup>

- 120 Volt AC, 3-stage vacuum motor
- Wound, tested, and assembled in the USA
- 143" of water sealed vacuum (typical)
- Patented bearing moisture protection
- Double ball bearing for added durability
- 5.7" bypass, tangential exhaust configuration
- 521 peak air watts (typical)
- 107 Cubic Feet per Minute open flow (typical)
- 9" power leads with quick-connect terminals
- UL / CUL Listed & RoHS / REACH compliant

<b>\$87.77</b>	<b>VMK6765</b>	Motor
<b>\$5.96</b>	<b>VMKBRUSH</b>	Brush



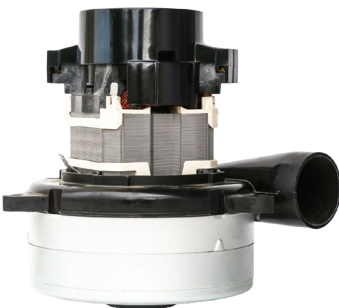
### VMK09

KLEEN-RITE MOTORS

**KLEEN-RITE**<sup>corp</sup>

- 220-240 Volt AC, 2-stage vacuum motor
- Wound, tested, and assembled in the USA
- 126" of water sealed vacuum (typical)
- Patented bearing moisture protection
- Double ball bearing for added durability
- 5.7" bypass, tangential exhaust configuration
- 537 peak air watts (typical)
- 123 Cubic Feet per Minute open flow (typical)
- 9" power leads with quick-connect terminals
- UL / CUL Listed & RoHS / REACH compliant

<b>\$78.74</b>	<b>VMK09</b>	Motor
<b>\$6.90</b>	<b>VMKB1015</b>	Brush



### VMK0963470

KLEEN-RITE MOTORS

**KLEEN-RITE**<sup>corp</sup>

- 120 Volt AC, 2-stage vacuum motor
- Wound, tested, and assembled in the USA
- 117" of water sealed vacuum (typical)
- Patented bearing moisture protection
- Double ball bearing for added durability
- 5.7" bypass, tangential exhaust configuration
- 422 peak air watts (typical)
- 105 Cubic Feet per Minute open flow (typical)
- 9" power leads with quick-connect terminals
- UL / CUL Listed & RoHS / REACH compliant

<b>\$61.29</b>	<b>VMK0963470</b>	Motor
<b>\$5.96</b>	<b>VMKBRUSH</b>	Brush



### VMK6471

KLEEN-RITE MOTORS

**KLEEN-RITE**<sup>corp</sup>

- 120 Volt AC, 2-stage vacuum motor
- Wound, tested, and assembled in the USA
- 115" of water sealed vacuum (typical)
- Patented bearing moisture protection
- Double ball bearing for added durability
- 5.7" bypass, peripheral exhaust configuration
- 474 peak air watts (typical)
- 116 Cubic Feet per Minute open flow (typical)
- 9" power leads with quick-connect terminals
- UL / CUL Listed & RoHS / REACH compliant

<b>\$77.59</b>	<b>VMK6471</b>	Motor
<b>\$5.96</b>	<b>VMKBRUSH</b>	Brush



### VMK6392

KLEEN-RITE MOTORS

**KLEEN-RITE**<sup>corp</sup>

- 120 Volt AC, 2-stage vacuum motor
- Wound, tested, and assembled in the USA
- 89" of water sealed vacuum (typical)
- Patented bearing moisture protection
- Double ball bearing for added durability
- 5.7" bypass, tangential exhaust configuration
- 290 peak air watts (typical)
- 98 Cubic Feet per Minute open flow (typical)
- 9" power leads with quick-connect terminals
- UL / CUL Listed & RoHS / REACH compliant

<b>\$61.71</b>	<b>VMK6392</b>	Motor
<b>\$5.96</b>	<b>VMKBRUSH</b>	Brush

# VACUUMS & ACCESSORIES

## KLEEN-RITE VACUUM MOTORS



### VMK135 MOTOR

KLEEN-RITE MOTORS

**KLEEN-RITE** .corp

- Qui-EM quiet fan system
- 5.7" bypass, peripheral exhaust configuration
- 286 peak air watts (typical)
- 94 Cubic Feet per Minute open flow (typical)
- Double ball bearing for added durability
- 120 Volt AC, 2-stage vacuum motor
- Wound, tested, and assembled in the USA
- 90" of water sealed vacuum (typical)
- 9" Power leads with quick-connect terminals
- UL / CUL Listed & RoHS / REACH compliant

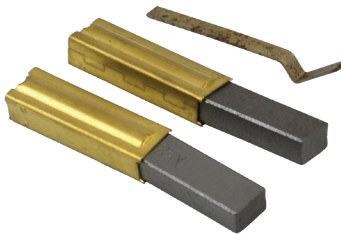
<b>\$57.06</b>	<b>VMK135</b>	Motor
<b>\$5.96</b>	<b>VMKBRUSH</b>	Brush



## LOOKING FOR A QUIET OPERATION...

In addition to the Kleen-Rite branded vacuum motors being wound, tested and assembled in the USA for nearly 20 years, the VMK135 version has the unique Qui-EM fan system that offers a significant reduction in Sound. The VMK135 model offers up to a 6 dBA reduction in sound power when compared to the highly popular VMK19 model. If your environment would benefit from quiet operation of your vacuum system, consider upgrading to the VMK135.

## VACUUM MOTOR BRUSHES & ACCESSORIES



### KLEEN-RITE 120 VOLT VAC MOTOR BRUSH KIT

VACUUM BRUSHES

- Each kit includes 2 brush assemblies
- 1 brush replacement gauge
- Instruction sheet

<b>\$5.96</b>	<b>VMKBRUSH</b>
---------------	-----------------



### LAMB VAC MOTOR BRUSH

VACUUM BRUSHES

- For VAL6336 & VAL6207

<b>\$2.63</b>	<b>VA30034</b>
---------------	----------------



### AMETEK CARBON BRUSHES 120 V - SET OF 2

VACUUM BRUSHES

- Replaces old KR part # VALP3347

<b>\$4.98</b>	<b>VAL833474-50</b>
---------------	---------------------



### AMETEK CARBON BRUSHES

VACUUM BRUSHES

- For 6565, 6471, 6472 Ametek motors

<b>\$4.54</b>	<b>VAL33392-17</b>
---------------	--------------------

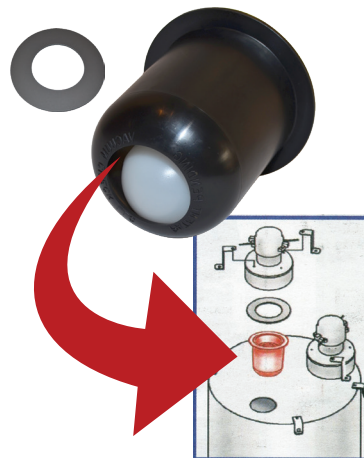


### VACUUM CLEANER TEST GAUGE

VACUUM ACCESSORIES

- 2½" steel gauge with a rubber adapter designed to fit easily over the intake of a vacuum cleaner hose
- Metal diaphragm with an easy to read white dial with black numerals and is scaled from -200 to 0" of water vacuum
- Through-the-dial reset screw which simplifies the adjustment of the gauge when being tested against a vacuum source of a known value

<b>\$59.68</b>	<b>GAV200</b>
----------------	---------------



### VACUUM CHECK

VACUUM ACCESSORIES



- Prevents suction loss in case of vacuum motor failure
- Instantly seals off failed motors retaining up to 90% of suction
- Direct fit - no vacuum modifications
- Does not interfere with normal operation
- Universal design fits any vertical motor vacuum with 3" motor hole (requires 1 per motor)
- VC002 adaptor for old style vacuums available
- Made with pride in the USA

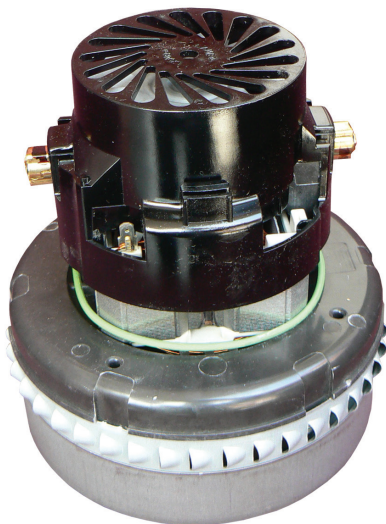
<b>\$14.85</b>	<b>VC001</b>	Vac Check
<b>\$2.00</b>	<b>VC002</b>	Gasket for Vacuums with Single Doors

**CALIFORNIA PROPOSITION 65 NOTE:** some items on this page may fall under the Proposition 65 act. Please consult the State of California Proposition 65 list ([oehha.ca.gov/proposition-65/proposition-65-list](http://oehha.ca.gov/proposition-65/proposition-65-list)) to learn more and to see a comprehensive list of Proposition 65 chemicals.



# VACUUMS & ACCESSORIES

AMETEK®



## VAL9414 LAMB DUAL BALL MOTOR

AMETEK MOTORS



- Black motor housing
- Dual ball bearings
- 5.7" fan diameter
- 2-stage blower
- Peripheral air discharger
- Skeleton frame
- 120V at 8.0 amp
- 1.6 HP
- Operating Temp -32° F - 104° F
- 94.0 CFM
- 50/60 Hz

<b>\$47.23</b>	<b>VAL9414</b>	Motor
<b>\$4.98</b>	<b>VAL833474-50</b>	Brush



Commercial vacuum cleaners rely solely on the proper motors to make them run, and no other name in the industry compares to Ametek. They produce replacement motors, repair parts and brushes for a large selection of different models. Used widely in car wash and commercial industrial units. Built to last and handle the rigors of continual use, you can't go wrong by choosing a product with the brand name Ametek.



## VAL9413 LAMB DUAL BALL MOTOR

AMETEK MOTORS



- Patented ACUSTEK quiet bypass
- 84.9" vacuum (H2O sealed) 60/50 Hz
- Max amps 8.0
- All-position mounting
- Max. air watts 255
- Fan diameter 5.7"

<b>\$83.60</b>	<b>VAL9413</b>	Motor	<b>NEW STYLE QUIET MOTOR</b>
<b>\$4.98</b>	<b>VAL833474-50</b>	Brush	

SAME SIZE AS THE GSE VAC MOTOR



## VAL12315 ETERNITY BRUSH MOTOR

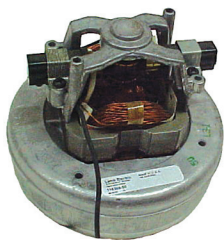
AMETEK MOTORS



- 2 stage 5.7" diameter
- "Eternity" brush system - up to twice the brush life!
- New generation bearing protection system
- Peripheral air discharge
- UL recognized
- 120V
- Provision for grounding

<b>\$91.82</b>	<b>VAL2315</b>	Motor
<b>\$9.19</b>	<b>VALP8505967-50</b>	Brush

UP TO 3X THE BRUSH LIFE!



## VAL6309 MOTOR

AMETEK MOTORS



- Component UL recognized
- Designed to handle clean, dry filtered air only
- One ball/one sleeve bearing
- 1 fan stage, 1 speed
- Provision for grounding
- 5.7" diameter
- Open frame construction
- 120V
- Thru-flow

<b>\$78.00</b>	<b>VAL6309</b>	Motor
<b>\$4.32</b>	<b>VALP33400-13</b>	Brush



## VAL5334 MOTOR

AMETEK MOTORS



- Use for central vacuums, car wash vacuums, commercial industrial vacuum systems
- Dual ball bearings
- Provision for grounding
- Tangential air discharge
- UL/CSA Recognized
- Two fan stages
- Bypass
- 7.2" diameter
- 120V

<b>\$220.55</b>	<b>VAL5334</b>	Motor
<b>\$4.18</b>	<b>VALP33415</b>	Brush



## VAL6392 MOTOR

AMETEK MOTORS



- Handles clean air only
- Provision for grounding
- Open frame construction
- Double ball bearings
- Bypass
- 120V
- Plastic fan-end bracket
- Tangential discharge
- 2 fan stage, 1 speed
- 5.7" diameter

<b>\$81.28</b>	<b>VAL6392</b>	Motor
<b>\$4.63</b>	<b>VALP33384</b>	Brush

TO WATCH A TOM'S WAY VIDEO ON HOW TO CHANGE YOUR VAC MOTOR BRUSHES VISIT OUR WEBSITE, OR SIMPLY SCAN THIS HANDY QR CODE WITH YOUR HANDHELD MOBILE DEVICE:



ALL OTHER LAMB MOTORS AVAILABLE BY SPECIAL ORDER!

# VACUUMS & ACCESSORIES

AMETEK®

TOP  
SELLER!



ALL OTHER LAMB MOTORS AVAILABLE BY SPECIAL ORDER!

## VAL6336 MOTOR

AMETEK MOTORS

AMETEK®

- Two fan stages
- 120V
- Peripheral air discharge
- Use for central vacuums, commercial vacuums, and car wash vacuums
- Bypass
- UL/CSA Recognized
- Plastic fan end bracket
- 5.7" diameter
- Ball/ball bearings
- 8.0 amp
- Provision for grounding

<b>\$65.60</b>	<b>VAL6336</b>	Motor
<b>\$2.98</b>	<b>VA30034</b>	Brush

TOP  
SELLER!



## VAL6757 QUIET MOTOR

AMETEK MOTORS

AMETEK®

- Use in central vacuums, commercial vacuums, and car wash vacuums
- Patented ACUSTEK® quiet bypass
- Two fan stages
- UL/CSA recognized
- Plastic fan end bracket
- Patented air seal bearing protection
- 120V
- Dual ball bearings
- 5.7" diameter
- Provision for grounding
- Epoxy painted fan case

<b>\$76.95</b>	<b>VAL6757</b>	Motor
<b>\$4.63</b>	<b>VALP33384</b>	Brush

## VAL6471 MOTOR

AMETEK MOTORS

AMETEK®

- Patented air seal bearing protection, U.S. patent #4,088,424, that draws air from the outside and prevents bearings from becoming wet
- Epoxy painted fan case improveS corrosion resistance
- Component recognized by UL
- 2 fan stages, 1 speed
- 5.7" diameter
- Plastic fan-end bracket
- 120V
- Provision for grounding
- Double ball bearings
- Bypass
- Open frame construction

<b>\$125.31</b>	<b>VAL6471</b>	Motor
<b>\$4.54</b>	<b>VAL33392-17</b>	Brush



## VAL6565 QUIET MOTOR

AMETEK MOTORS

AMETEK®

- Patented air seal bearing protection, U.S. patent #4,088,424, that draws air from the outside and prevents bearings from becoming wet
- Component recognized by UL
- Epoxy painted fan case to improve corrosion resistance
- 5.7" diameter
- 3 fan stage, 1 speed
- Provision for grounding
- Open frame construction
- Bypass
- Plastic fan end bracket
- Double ball bearings
- 120V
- Tangential discharge

<b>\$121.88</b>	<b>VAL6565</b>	Motor
<b>\$4.54</b>	<b>VAL33392-17</b>	Brush

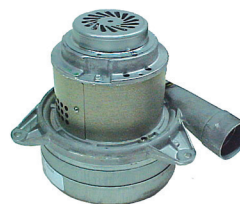
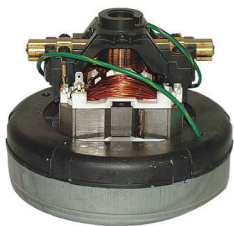
## VAL9411 MOTOR

AMETEK MOTORS

AMETEK®

- Great for vacuums/intermittent duty applications
- Thru-flow discharge
- 1 stage, 1 speed
- 5.7" diameter
- Max air watts: 190
- UL Listed & CSA Certified
- 120V
- Max amps: 6.8

<b>\$92.47</b>	<b>VAL9411</b>	Motor
<b>\$4.98</b>	<b>VAL833474-50</b>	Brush



## VAL6119 MOTOR

AMETEK MOTORS

AMETEK®

- Use in central vacuums, steam carpet cleaners, commercial/industrial vacuum systems
- Provision for grounding
- Epoxy coated fan system
- Bypass
- 120V
- Tangential air discharge
- Three fan stages
- 7.2" diameter
- Dual ball bearings

<b>\$262.80</b>	<b>VAL6119</b>	Motor
<b>\$4.73</b>	<b>VALP33415</b>	Brush

# VACUUMS & ACCESSORIES

## WASTE RECEPTACLES



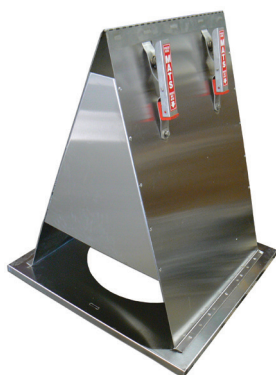
### 45 GALLON EXPANDED STEEL STREET BASKET RUBBERMAID



- Designed to withstand constant harsh weather
- Hot dipped galvanized steel and powder coated models
- Reinforced curled edges and bottom drain holes
- See-through design ideal for public high traffic areas
- Tapered design permits nesting for easy storage

PRICE	PART #	COLOR	SIZE
<b>\$375.31</b>	<b>WRSBR52E-BK</b>	Black	24"

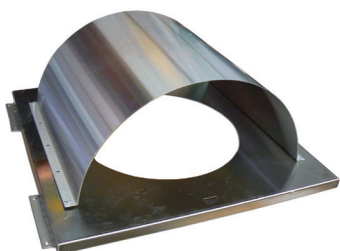
## TRASH ACCESSORIES



### TRASH COVER HOLDER TRASH ACCESSORIES

- 4 stainless steel channel mat clamps
- Included with all units
- Stainless steel bolts
- Units ship unassembled

PRICE	PART #	DESCRIPTION
<b>\$353.83</b>	<b>TCMH18</b>	Retrofit mat holder (top only) for 18" hole bases
<b>\$491.74</b>	<b>TCMH1828COM</b>	28" x 28" base with 18" hole complete set
<b>\$495.96</b>	<b>TCMH1830COM</b>	30" X 30" base with 18" hole complete set
<b>\$437.97</b>	<b>TCMH1328COM</b>	28" X 28" base with 13" hole complete set



### STAINLESS STEEL TRASH ENCLOSURE TRASH ACCESSORIES

- Assembled: must be shipped freight
- Unassembled: can be shipped UPS

PRICE	PART #	SIZE
<b>\$217.96</b>	<b>TC1328</b>	28" x 28" - 13" Hole
<b>\$260.88</b>	<b>TC1828</b>	28" x 28" - 18" Hole
<b>\$265.35</b>	<b>TC1830</b>	30" x 30" - 18" Hole



### BUCKET BRACKET TRASH ACCESSORIES

- Convert your 5-gallon bucket into a trash can for in-bay or island use
- Stainless steel trash bucket holder

**\$41.58** BHSS



### HI DENSITY POLY CAN LINERS FORDION JANITORIAL SUPPLIES

- Natural color
- High density for maximum efficiency

PRICE	PART #	SIZE	MICRONS	CAPACITY	CASE QTY
<b>\$16.20</b>	<b>WR610001</b>	24"L x 24"W	6	7-10 Gal.	1,000
<b>\$28.22</b>	<b>WR610002</b>	60"L x 36"W	12	55 Gal.	200



## DON'T FORGET TO ORDER CAN LINERS!

We have can liners available in a wide range of capacities. From 7 gallons to 55 gallons, we have exactly what you need!

# VACUUMS & ACCESSORIES

## WASTE RECEPTACLES & CIGARETTE DISPOSAL



### GLUTTON® BROWN 56 GALLON CONTAINER

RUBBERMAID



- Largest capacity containers for indoor/outdoor use
- Built to withstand extreme weather and handling
- Hold down base can be filled with sand or water to provide added stability and security
- Perfect for large crowds and high-traffic areas

<b>\$255.00</b>	<b>WR256B00-BRN</b>	Container Only
<b>\$250.00</b>	<b>WR256V00-BRN</b>	Hooded Top - No Doors

CONTAINER AND HOODED TOPS SOLD SEPARATELY



### MARSHALL® 15 GALLON CLASSIC WASTE CONTAINER

RUBBERMAID



- Textured finish helps minimize appearance of surface scratches
- Designed for indoor and protected outdoor environments such as atriums and indoor pools
- Doors on both sides provide easy access for trash disposal
- Rugged construction resists dents and scratches
- Included retainer hardware secures and conceals can liners

<b>\$222.00</b>	<b>WR816088BK</b>	Black
-----------------	-------------------	-------



### ALADDIN SELF-EXTINGUISHING SMOKERS POLE

RUBBERMAID



- Steel liner for easy disposal
- Oxygen reducing fluted design extinguishes cigarettes
- Factory mutual-approved fire-safe and self-extinguishing
- Nylon base pads prevent damage to surface and base
- Constructed with fire-safe steel engineered to not burn
- Built to survive in any environment
- Weather resistant
- Top and base connected with nickel-plated brass chain to deter theft
- Stainless steel latches - quickly fasten and form a tight-fitting seal
- Dimensions: 16" D X 38¾" H
- Nickel-plated brass chain connects the top and the base to deter theft

<b>\$240.35</b>	<b>WRR1639EHGR</b>
-----------------	--------------------



### SMOKER'S POLE

RUBBERMAID



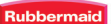
- Give customers a convenient place to dispose their cigarettes. Small size reduces obstructions in high traffic areas. UV-stabilized coating survives heavy sunlight exposure. Constructed with weather-resistant, fire-safe aluminum.
- Compact design enables placement in high traffic areas
- Weather-resistant powder-coating
- Features recessed extinguishing screen
- Made of fire-safe aluminum
- Easy-empty design
- Dimensions: 12¾" W x 41" H

<b>\$287.63</b>	<b>WRR1SM</b>
-----------------	---------------



### GROUNDKEEPER® SMOKER'S STATION

RUBBERMAID



- The GroundsKeeper® is a smoking management receptacle designed to handle all weather conditions with a resin construction. Inside is a hygienic galvanized steel canister that is easy to service. Canister holds a large amount of cigarette refuse. A steel base plate discourages theft and increases stability.
- Hygienic, easy-to-service steel canister
- Steel base plate adds stability and discourages theft
- Dimensions: 12¾" W x 39½" H
- Restricted opening shields waste from view, weather, and flow of oxygen
- Galvanized steel inner canister holds large quantities of cigarette waste

<b>\$138.00</b>	<b>WR257088</b>
-----------------	-----------------

# VACUUMS & ACCESSORIES

## TRASH GRABBERS



### NIFTYNABBER PRO HAND SQUEEZE TRASH GRABBER

UNGER

- Convenient squeeze handle trash grabber that eliminates the need to bend over or stoop to pick up garbage off the ground. It has a gripping mechanism that runs parallel to the shaft and is squeezed with all fingers to greatly reduce hand fatigue. Quickly and easily grab wrappers, cans, bottles, and other litter. This is a great tool for car washes, store lots, parks, highways, and other areas where trash collects.
- 36" length | 4¼" grabber opening

**\$38.18** NN900

## SAFETY CONES

### NAVICADE TRAFFIC CONE & BASE

SAFETY ITEMS



- Eye-catching bright orange and has 6" and 4" reflective strips on the top half of the cone. This convenient cone collapses into the base for easy transport and storage. Excellent for guiding traffic, alerting people to dangerous areas, and marking off areas under repair on your car wash property.
- 28" tall - collapses to under 3"
- Water-resistant plastic base and nylon cone
- Vinyl carrying case with zipper
- Meets MUTCD regulations for traffic cones and channeling devices

**\$42.22** SFT2000C-R

### TRAFFIC CONES

SAFETY ITEMS



- Made with highly durable PVC that is capable of withstanding high-speed impacts and heavy industrial use. This safety device boasts a vivid orange cone and a sturdy black base. Multiple cones can be conveniently stacked inside each other for easy storage when not in use. Excellent for guiding traffic, alerting people to dangerous areas, and marking off areas under repair.
- Dimensions: 28" Height x 15" Base Diameter x 11" Cone Diameter

<b>\$22.57</b>	<b>SFT2000</b>	Solid
<b>\$21.76</b>	<b>SFT2000-R</b>	With Reflective Tape

### COLLAPSIBLE REFLECTIVE TRAFFIC CONE

SAFETY ITEMS



- The Navicade is a 48" high channelizer, perfect for use in parking lot and roadwork traffic control. Its slim design makes it a space-saving alternative to bulky barrels. The cone is structured so that its molded plastic base has no stress points and attaches to an included 16-pound rubber base that adds stability. It's easy to attach a reflector to the cone's top thanks to mounting holes, and, an offset handle ensures you can still pick the unit up and move it around without having to remove any mounted items.
- Orange cone is 48" high
- Built-in reflecting strips
- 16 lb. black rubber base adds stability
- Includes add-on rubber base that adds weight and height
- Add signs, round reflectors, or lights to mounting holes on top
- Offset handle for easy transport and movement

<b>\$41.33</b>	<b>SI0870</b>	Complete Cone & Base
<b>\$23.26</b>	<b>SI0870C</b>	Cone Only
<b>\$18.90</b>	<b>SI0870B</b>	Base Only

## CLEARANCE BARS



### CLEARANCE BAR

IDEAL SHIELD®



- Durable plastic bar = no maintenance and no painting!
- Easy installation
- Variety of colors and sizes available
- Eye bolts and lettering included

PRICE	PART #	LENGTH	WITH LETTERING
<b>\$94.78</b>	<b>CB01</b>	78"	Yes Specify Height
<b>\$95.69</b>	<b>CB02</b>	78"	No

PLEASE NOTE: IDEAL SHIELD® PRODUCTS ARE NON-RETURNABLE

# VACUUMS & ACCESSORIES

## BOLLARD COVERS

### HEAVY DUTY BOLLARD COVERS

IDEAL SHIELD



- **DURABLE PRODUCTS. MAINTENANCE FREE. NEVER PAINT AGAIN!**
- Ideal Shield bollard covers save you time, money, and cost of maintenance by eliminating the need to paint! We offer more colors, unique styles, sizes, and custom options. Simply slide over existing posts for quick and easy installation. Invest in Ideal Shield for a brand new look for years to come!
- Durable plastic cover = no maintenance and no painting!
- Fits all pipe sizes 3" - 12". Available in any color!
- Quick and easy installation
- Custom options and logos available



PRICE	PART #	DIA. X LENGTH	COLOR
\$48.39	PC352BL	3-3 1/2" x 52"	Blue
\$48.39	PC352R		Red
\$48.39	PC352Y		Yellow
\$48.39	PC360R	3-3 1/2" x 60"	Red
\$48.39	PC360Y		Yellow
\$48.39	PC42S	Square Pole Cover	Specify
\$48.39	PC452BL	4-4 1/2" x 52"	Blue
\$48.39	PC452G		Green
\$48.39	PC452OR		Orange
\$48.39	PC452R		Red
\$48.39	PC452W		White
\$48.39	PC452Y		Yellow
\$52.54	PC460BL	4-4 1/2" x 60"	Blue
\$52.54	PC460R		Red
\$52.54	PC460Y		Yellow
\$48.39	PC552BL	5-5 1/16" x 52"	Blue
\$48.39	PC552G		Green
\$48.39	PC552R		Red
\$48.39	PC552Y		Yellow
\$52.54	PC560BL	5-5 1/16" x 60"	Blue
\$52.54	PC560R		Red
\$52.54	PC560W		White
\$52.54	PC560Y		Yellow

PRICE	PART #	DIA. X LENGTH	COLOR
\$48.39	PC652BK	6 - 6 5/8" x 52"	Black
\$50.69	PC652BL		Blue
\$48.38	PC652G		Green
\$48.39	PC652R		Red
\$48.39	PC652Y		Yellow
\$71.88	PC665BL	6 - 6 5/8" x 65"	Blue
\$71.88	PC665R		Red
\$71.88	PC665Y		Yellow
\$85.72	PC684BL	6" x 84"	Blue
\$86.09	PC684Y		Yellow
\$66.35	PC756BL	7 - 7 1/16" x 56"	Blue
\$66.35	PC756R		Red
\$66.35	PC756Y		Yellow
\$88.47	PC860R	8 - 8 5/8" x 60"	Red
\$72.89	PC860Y		Yellow

### REFERENCE CHART

OD = Outside Diameter • ID = Inside Diameter

PIPE OD	SLEEVE OD	PIPE CIRC.	PIPE SIZE	IDEAL SLEEVE SIZE
3.5"	3 5/8"	11"	3"	3"
4"	4 1/8"	12 1/2"	3 1/2"	3 1/2"
4.5"	4 7/8"	14"-15"	4"	4"
5.563"	5 7/8"	17 1/2"	5"	5 1/2"
6.625"	6 7/8"	20 1/2"-21 1/2"	6"	6"
7.5"	7 7/8"	24"	7"	7 1/2"
8.625"	8 7/8"	27"-27 1/2"	8"	8"
10.75"	10 7/8"	34"-34 1/2"	10"	10"
12.75"	12 5/8"	37 5/8"	12"	12"

### EASY INSTALL:

Simply place the included single-sided adhesive tape on existing pole, then slide the new bollard cover over it!



PLEASE NOTE: IDEAL SHIELD® PRODUCTS ARE NON-RETURNABLE

### NEVER PAINT AGAIN!

The plastic bollard sleeve provides you with a new look that will last for years to come and you will never have to paint again! The product is manufactured from 100% recyclable plastic.

Ideal for Parking Garages, Car Washes, Bank Drive Thrus, Apartment Buildings, Rental Parking Lots and more!



### ECONOMY BOLLARD COVERS

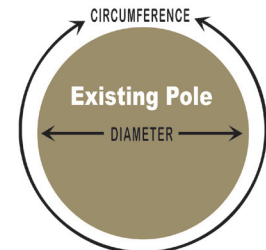
VALUE LINE

ONLY TO BE USED ON POLES WITH A 14"-15" CIRCUMFERENCE			
\$34.30	KRV460Y	4"-4 1/2" x 60"	Yellow
\$34.30	KRV460B	4"-4 1/2" x 60"	Blue
\$34.30	KRV460R	4"-4 1/2" x 60"	Red
\$34.30	KRV460W	4"-4 1/2" x 60"	White

ONLY TO BE USED ON POLES WITH A 20.5"-21.5" CIRCUMFERENCE			
\$38.99	KRV660Y	6 5/8" x 60"	Yellow
\$38.99	KRV660B	6 5/8" x 60"	Blue
\$38.99	KRV660R	6 5/8" x 60"	Red
\$38.99	KRV660R	6 5/8" x 60"	White

### WHAT SIZE POST GUARD DO I NEED?

Please make sure to measure your existing poles before placing an order for bollard covers. Please see notes on specific products when ordering!



**HAVE CIRCUMFERENCE SIZE READY WHEN PLACING YOUR ORDER.**

# VACUUMS & ACCESSORIES

## CLEARANCE BARS & PARKING BLOCKS

New!



### UV RESISTANT PLASTIC 6 FT. STANDARD ULTRA PARKING BLOCK - FOR ASPHALT USE

IDEAL SHIELD

- 6' long
- 100% recycled plastic
- Weather, chemical, and UV resistant
- Patented recessed bolt holes
- Easy and fast installation (hardware spikes included)
- Lightweight for reduced shipping costs and easy transport
- Install on asphalt
- Made in the U.S.A.
- Manufacturer lifetime warranty

<b>\$102.24</b>	<b>PC100Y-A</b>	Yellow	Install on Asphalt
<b>\$102.24</b>	<b>PC100G-A</b>	Gray	Install on Asphalt
<b>\$102.24</b>	<b>PC100BL-A</b>	Blue	Install on Asphalt

New!



### UV RESISTANT PLASTIC 6 FT. STANDARD ULTRA PARKING BLOCK - FOR CONCRETE USE

IDEAL SHIELD

- 6' long
- 100% recycled plastic
- Weather, chemical, and UV resistant
- Patented recessed bolt holes
- Easy and fast installation (hardware spikes included)
- Lightweight for reduced shipping costs and easy transport
- Install on concrete
- Made in the U.S.A.
- Manufacturer lifetime warranty

<b>\$102.24</b>	<b>PC100Y-C</b>	Yellow	Install on Concrete
<b>\$102.24</b>	<b>PC100G-C</b>	Gray	Install on Concrete
<b>\$102.24</b>	<b>PC100BL-C</b>	Blue	Install on Concrete



### CLEARANCE BARS

POST GUARD

- The Height Guard is made of HDPE plastic, has 2 - 3M reflective stripes on each end and includes a graphics kit - "CLEARANCE" and 2 sets of numbers. Available in all 11 Post Guard colors. Height Guard ships in 2 pcs and is assembled on site.

<b>\$111.25</b>	<b>PG4580</b>	4.5 X 80 Height Guard, yellow w/black graphics & red tape
<b>\$111.25</b>	<b>PG4580S</b>	4.5 x 80 Height Guard - Specify Color*
<b>\$138.75</b>	<b>PG0780</b>	7 x 80 Height Guard, yellow w/black graphics & red tape
<b>\$135.00</b>	<b>PG0780S</b>	7 x 80 Height Guard - Specify Color*

\*\*SPECIFY BAR COLOR: Yellow, White, Blue, Royal Blue Red, Black, Gray, Orange, Green, Brown, Beige

\*\*SPECIFY TAPE COLOR: White, Red, Black

\*\*SPECIFY GRAPHIC COLOR: Black or White

PLEASE NOTE: POST GUARD® PRODUCTS ARE NON-RETURNABLE



### SPEED BUMPS

POST GUARD



- Helps make parking lots safer by reducing vehicle speeds to 2-5 mph
- Channeled bottom facilitates drainage and can cover cabling or piping
- Flexible design conforms to the contour of virtually any road surface
- Smooth riding traffic control products
- Simple to install and made from 100% recycled tires!

<b>\$180.00</b>	<b>PG24111</b>	Easy Rider Speed Bump 4' L x 12" W x 2¼" H
<b>\$232.50</b>	<b>PG26111</b>	Easy Rider Speed Bump 6' L x 12" W x 2¼" H
<b>\$38.75</b>	<b>PG26999</b>	End Cap, Easy Rider Speed Bump 6" long x 12" W x 2¼" H



### 6 FT. PARK-IT CURB

POST GUARD



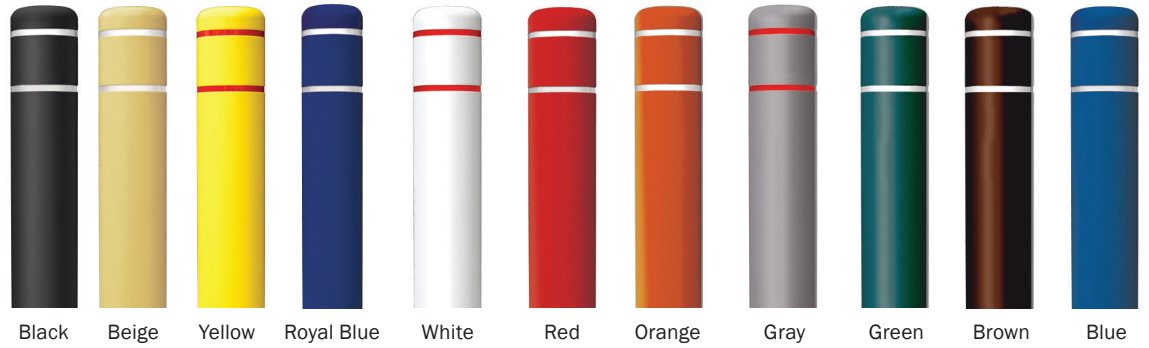
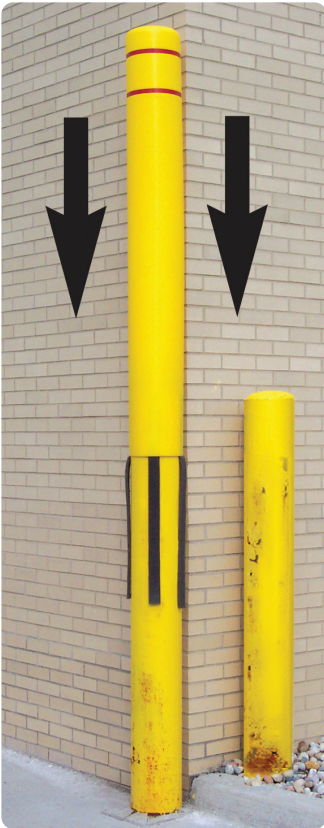
- Dimensions: 72" x 6" x 4" | Weight: 34 lbs
- Made from 100% recycled rubber | Contains molded-in reflective tape
- Can be installed on concrete or asphalt surfaces

<b>\$105.00</b>	<b>PARK-IT-A</b>	6 ft Park-It with rebar spikes for asphalt
<b>\$132.50</b>	<b>PARK-IT-C</b>	6 ft Park-It with shields and bolts for concrete

PLEASE NOTE: POST GUARD® PRODUCTS ARE NON-RETURNABLE

# VACUUMS & ACCESSORIES

## POST GUARD® POLE COVERS



### ROUND POLE COVERS

- Whether you call them post covers, bollard covers or post sleeves, they are available in a wide variety of colors. Post Guard is designed with smooth sides and two recessed reflective stripes near the rounded top.

PRICE	PART #	SIZE	POLE COVER COLOR	TAPE COLOR
<b>\$29.50</b>	<b>PG4552</b>	4½" x 52"	Yellow, Gray, White, Orange, Blue, Green, Red, Brown, Black, Beige, Royal Blue**	Red, White, Yellow*, Black*, Green*, Blue*
<b>\$33.33</b>	<b>PG4564</b>	4½" x 64"	Yellow, Gray, White, Orange, Blue, Green, Red, Brown, Black, Beige, Royal Blue**	Red, White, Yellow*, Black*, Green*, Blue*
<b>\$37.18</b>	<b>PG0760</b>	7" x 60"	Yellow, Gray, White, Orange, Blue, Green, Red, Brown, Black, Beige, Royal Blue**	Red, White, Yellow*, Black*, Green*, Blue*
<b>\$74.35</b>	<b>PG8772</b>	8⅞" x 72"	Yellow, Red, White, Gray, Blue, Black	Red, White, Yellow*, Black*, Green*, Blue*
<b>\$91.02</b>	<b>PG1060</b>	10⅞" x 60"	Yellow	Red, White, Yellow*, Black*, Green*, Blue*

\* These tape colors are available at an additional **\$4 PER SLEEVE** and may require a slightly longer lead time

\*\* Royal Blue available in larger sizes by request but will require a 4 week lead time



### SQUARE POLE COVERS

- Square Post Guard is designed with crisp and clean lines. Its two reflective red stripes are recessed into the high quality yellow polyethylene
- Solid and thicker
- Durable surface helps prevent scuffing
- Top UV package assures longer fade resistance

PRICE	PART #	SIZE	COVER	TAPE
<b>\$73.21</b>	<b>PG4545S</b>	4½" x 4½" x 55"	Yellow	Red
<b>\$83.93</b>	<b>PG6565S</b>	6½" x 6½" x 55"	Yellow	Red



### BOLT DOWN BOLLARDS

- Save time installing these surface mounted bollards!
- No core drilling or excavation needed
- Weld-on cap • 1 Year Warranty

<b>\$184.62</b>	<b>PG0436</b>	4" X 36" w/ 8" X 8" Plate, Yellow Powder Coated
<b>\$225.00</b>	<b>PG0442</b>	4" x 42" w/ 8" x 8" Plate, Yellow Powder Coated
<b>\$365.00</b>	<b>PG0642</b>	6" x 42" w/ 10" x 12" Plate, Yellow Powder Coated
<b>\$30.00</b>	<b>PGBOLTS*</b>	Concrete Anchor Set of 4

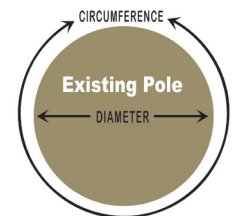
\*Please note that these are not included with your bollards and must be purchased separately

## HELPFUL HINT

### WHAT SIZE POST GUARD DO I NEED?

Use this handy chart to determine the correct size Post Guard for your posts! Save yourself time by measuring before you place your order!

DIAMETER MEASURES	POST GUARD NEEDED
4½" or Less	4½" Post Guard
Greater than 4½" less than or equal to 7"	7" Post Guard
Greater than 7" less than or equal to 8⅞"	8.875" Post Guard
Greater than 8.875" less than or equal to 11½"	11½" Post Guard



**HAVE CIRCUMFERENCE SIZE READY WHEN PLACING YOUR ORDER.**

For expanded sizing charts and more information on how to measure for your bollard covers, please visit [kleen-ritecorp.com](http://kleen-ritecorp.com)!

PLEASE NOTE: POST GUARD® PRODUCTS ARE NON-RETURNABLE