

SECURITY SYSTEMS



NOW AVAILABLE FOR YOUR IPHONE, IPAD OR DROID!

HIGH DEFINITION DVR SYSTEMS

TURBO WASH DVR

- What makes Turbo Wash DVR unique is that it offers a complete integrated digital surveillance system to meet a wide range of digital security needs: HD 4K (8 MP) 5 Megapixel (5MP), 4 Megapixel (4MP) 1080P (2MP), Analog video, Starlight/Starvis night vision cameras, HD license plate cameras and management software - all integrated on the internet with CMS, mobile device and web browser access. In short, we provide a total security system that is fast, secure, reliable, cutting-edge, easily storable and retrievable digitally on any internet connected PC, while providing the most cost-effective and technically advanced surveillance systems on the market.

HIGH DEFINITION DVR MODELS

TURBO WASH DVR



- 4, 8, 16, 32 channel models that are hybrid supporting AHD/TVI/CVI/CVBS/Analog video
- H.265 Compression
- **COMPETENT ALL HYBRID SYSTEM:** Simultaneously connect 4K (8MP), 5MP, 4MP, 2MP, AHD, TVI, CVI, CVBS, (4 Channel DVR supports one 4K camera)
- **INTERFACE:** Intuitive, stable and user-friendly embedded system
- **MOBILE VIEW:** Mr. Patrol for iPad/iPhone/Android

PRICE	PART #	MODEL	STORAGE		PRICE	PART #	MODEL	STORAGE	
\$647.02	TWAST04	4 Channel	2 TB	California Proposition 65	\$1,571.38	TWAST16	16 Channel	6 TB	California Proposition 65
\$950.54	TWAST08	8 Channel	4 TB	California Proposition 65	\$3,495.00	TWAQ32	32 Channel	12 TB	California Proposition 65

TWAHD16CDVR - PREMIUM 16 CHANNEL DVR PACKAGE - 6 TB DRIVE

TURBO WASH DVR



- 1 - TWAST16 - 16 channel all hybrid HD DVR
- 1 - 16 channel 12 volt power supply box
- 1 - HD BNC connector CAP Kit-1 (32 pcs)
- 8 - TW500ESLW - Sony 5mp Starvis back illuminated sensor
- 2 - Siamese video/power cable 500'
- 8 - Power pigtail connector for camera including gel filled crimps

\$3,325.50 TWAHD16CDVR

TWAHD8CDVR - PREMIUM 8 CHANNEL DVR PACKAGE - 4 TB DRIVE

TURBO WASH DVR



- 1 - TWAST08 - 8 channel all hybrid HD DVR
- 2 - 4 channel 12 volt power supplies
- 10 - BNC CAP connector including tools
- 5 - TW500ESLW - Sony 5mp Starvis back illuminated sensor
- 1 - Siamese video/power cable 500'
- 5 - Male & female power pigtail connector for camera including gel filled crimps

\$2,203.39 TWAHD8CDVR

CALIFORNIA PROPOSITION 65 NOTE: some items on this page may fall under the Proposition 65 act. Please consult the State of California Proposition 65 list (oehha.ca.gov/proposition-65/proposition-65-list) to learn more and to see a comprehensive list of Proposition 65 chemicals.

SECURITY SYSTEMS



VANDAL PROOF DAY/NIGHT MOTORIZED/AUTO FOCUS 2.7 13.5MM VARIFOCAI CAMERA WITH SONY STARVIS IMAGE SENSOR

TURBO WASH DVR



• A great camera for viewing vehicles at tunnel entrance or any area that requires the highest detail. High quality color images due to the Sony Starvis back-illuminated sensor. This is a multi-switchable AHD/TVI/CVI/AVBS HD waterproof camera.

SPECIFICATIONS:

- 2.7-13.5mm Motorized Zoom & Auto Focus
- 4 in 1 AHD/TVI/CVI/Analog Up
- Varifocal
- 12 VDC
- Switchable to 960H Traditional CCTV
- Auto Exposure
- Weatherproof IP67
- Single angle adjustment in seconds
- Auto White Balance
- Vandal-proof
- Built-in IR-LED or LED Warm light
- 1/2.9 Sony Starvis back-illuminated CMOS sensor
- Electronic Shutter

4K MODEL

\$240.00

TW8004XES

Built-in IR-LED, Effective Range 25M | Sony 4K (8MP) Sensor

5MP MODEL

\$190.59

TW5005XESLW

Built-in IR-LED or LED Warm light, Effective Range 30M | 5MP Sensor



VANDAL PROOF DAY/NIGHT 5MP 2.8MM FIXED LENS CAMERA WITH SONY STARVIS IMAGE SENSOR

TURBO WASH DVR



• Reliable camera for monitoring car wash bays! Up to 5MP HD resolution means high-quality video recording to keep tabs on your car wash facility. Color Functions perfectly any time of day or night with full color warm light IR and the Sony Starvis back-illuminated sensor for incredible night images. The warm light infrared will allow the camera to see in total darkness. Specially designed to be vandal-proof with auto-adjustments to white balance and exposure for maximum efficiency and convenient, hands-free operation

SPECIFICATIONS:

- 4 in 1 AHD/TVI/CVI/Analog Up to 5MP high definition
- Switchable to 960H traditional CCTV
- Auto white balance
- 2.8mm fixed lens
- Simple angle - Adjustment in seconds
- Weatherproof IP67
- 1/2.9 Sony 5MP Starvis back-illuminated CMOS sensor
- Built-in warm light full color LED, effective range 25m
- Auto exposure
- Electronic shutter
- Vandal-proof
- 12 VDC

\$168.24

TW500ESLW



VANDAL-PROOF INFRARED DAY/NIGHT CAMERA

TURBO WASH DVR



• Reliable camera for monitoring car wash bays! High-definition resolutions means high-quality video recording to keep tabs on your car wash facility. Functions perfectly during any time of day or night. Specially designed to be vandal-proof with auto-adjustments to white balance and exposure for maximum efficiency and convenient, hands-free operation!

SPECIFICATIONS:

- 4 in 1 AHD/TVI/CVI/Analog High Definition
- 1/2.8 Sony Starvis back-illuminated CMOS sensor
- Switchable to 960H traditional CCTV
- Built-in IR-LED, effective range 20m
- Auto white balance
- Auto exposure
- 2.8 mm fixed lens
- Electronic shutter
- Simple angle - adjustment in seconds
- Vandal-proof
- Weatherproof IP66
- 12 VDC / 550mA

HD 2MP (1080P) & 960H

\$138.82

TW200ESL

2MP, 1080P

TURBO WASH DVR PARTS & ACCESSORIES

CONNECTORS, TOOLS & KITS

TURBO WASH DVR



\$1.64	TWBNCF	Female BNC
\$2.99	TWBNCC	Male BNC Coupling
\$3.21	TWPTL	Power Pigtail Connector
\$3.36	TWCBNC-HD	HD CAP BNC Male Connector with Black CAP
\$0.30	TWCAP	"Cut and Push" Black Coax Connector
\$8.53	TWSPC	CAP Stripping Tool
\$12.69	TWPICAP	Pliers for CAP System
\$116.47	TWCAPKIT-1	CAP BNC-HD Small Kit with 32 BNC-HD
\$162.35	TWCAPKIT-2	CAP BNC-HD Medium Kit with 50 BNC-HD



TWBNCC



TWPICAP



TWPTL

TURBO WASH DVR PARTS & ACCESSORIES



SIAMESE VIDEO CABLE
TURBO WASH DVR

\$170.00 TWCABLE500



BNC CAP KIT
TURBO WASH DVR



Kit of CAP system parts. Uses a non-metallic female connector. CAP system is designed to make every coaxial termination simple, quick and reliable and to drastically reduce all typical problems that arise when terminating coaxial cables. CAP is used with Turbo Wash's specific adapters and becomes a connector usable in all existing coaxial standards.

INCLUDES:

- 32 Pieces | Connectors | Tools | Pliers | Case

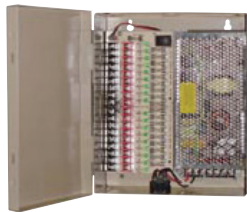
\$116.47 TWCAPKIT-1



HOUSING MOUNT
TURBO WASH DVR

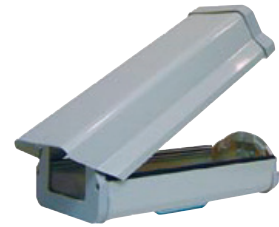


\$22.67 TW205



**18 CHANNEL,
12V POWER SUPPLY**
TURBO WASH DVR

\$164.71 TWDC18



OUTDOOR HOUSING
TURBO WASH DVR



\$40.00 TW605

COIN COLLECTION SYSTEMS & REPLACEMENT PARTS



CENTRALIZED COIN COLLECTION SYSTEMS

VAC-IT-UP

• Self-serve car wash operators can now take advantage of this innovative coin collection system. It's quick and easy to unload. It features a new tilt-out coin storage canister designed to pour the coins right from the canister into your money bag. The legs are secured to a concrete floor and the back is secured to the wall. PVC piping goes from the VAC-IT-UP to your bays, or vacuum islands. The coins are vacuumed up through the piping to the canister, eliminating theft at the meters. VAC-IT-UP is only activated when quarters are inserted in the meters (first coin activation).

ELECTRICAL REQUIREMENTS:

- Provide one 120 Volt AC 30 amp circuit to control panel for every two Vac-It-Up motors

SPECIFICATIONS:

- Vault Chamber: Heavy gauge steel
- Vault Door: Stainless steel
- Lock: Medeco
- Coin Canister: Vault equipped with hinged coin storage canisters which hold \$1,500 worth of quarters each

OPTIONAL ITEMS:

1. Timer control panel
2. Access Box
3. Roof top motor housing

SECURITY ADVANTAGES

- Centralize Coin Collection
- Reduces attempted vandalism & theft
- Privately housed, Labor efficient



REPLACEMENT VAULT MOTOR
REPLACEMENT PARTS

\$122.85 VAL6472

PIPES	CANISTER	APPROX. LBS.	SIZE	TOTAL \$ CAPACITY
2 Pipe System	2	170 lbs.	76" x 17¾" x 10½"	\$3,000
3-4 Pipe System	2	170 lbs.	76" x 17¾" x 10½"	\$3,000
5-6 Pipe System	3	230 lbs.	76" x 26½" x 10½"	\$4,500
7-8 Pipe System	4	340 lbs.	76" x 63" x 10½"	\$6,000
9-10 Pipe System	5	400 lbs.	76" x 45" x 10½"	\$7,500
11-12 Pipe System	6	400 lbs.	76" x 45" x 10½"	\$9,000

CALL FOR PRICING

HIGH SECURITY "VAULT" WITH MOTOR COMPARTMENT

Constructed of heavy gauge steel and sealed with a continuous electrical weld. The door is stainless steel with a Medeco lock.

OPTIONAL TIMER CONTROL PANEL

Complete enclosure with motor "test" buttons

COIN COLLECTION SYSTEM PARTS

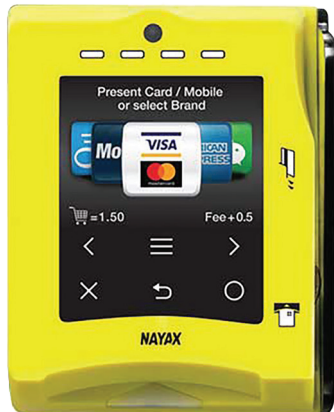
REPLACEMENT PARTS

VACITUPBOX	Overhead U-Trap 12" x 12" x 5"
VACITUPBOX-U	Underground P-Trap Access Box
VACITUPBOX1	Overhead U-Trap 12" x 12" x 12"
VACITUPFLAPPER	Coin Vault Flapper with Rivets
VACITUPGAS	Gasket Material (Price Per Foot)
VACITUPPIPE	J-Pipe

NAYAX CREDIT CARD SYSTEMS

NAYAX VPOS-TOUCH ALL IN ONE GRAPHICAL PULSE CASHLESS PAYMENT SYSTEM FOR CAR WASH AND AIR AND VAC

NAYAX



NAYAX offers exclusive and important revenue generating and costs savings features coming from the international engineering leader of cashless technology. NAYAX engineers and manufacturers the cashless devices and reporting software supporting systems on nearly 500,000 unattended machines in 60+ countries and works with 45 financial institutions worldwide, accepting 26 currencies. Why does this matter to customers? Because it allows NAYAX to exclusively offer many important money-generating and efficiency features at no additional cost. VPOS TOUCH ALL-IN-ONE GRAPHICAL DISPLAY DEVICE - Best in Class .

KEY EXCLUSIVE HIGHLIGHTS AND FEATURES:

- NEW ADDITION – Instant receipts
- Totally flexible price setting options built in: Count up | incremental | Count down | 6 prices
- EMV both chip and tap enabled *****(NO CHARGEBACKS)**** No swipe - EMV Both Chip and Tap Enabled and Fully 100% PCI Compliant – WITH NAYAX DEVICES WE ACCEPT THE MOST SECURE TRANSACTIONS WITH EMV CONTACT AND CONTACTLESS IN THE US. Nayax has been chip and wave card for 4 years in the US.
- Easy and inexpensive retro-fit on all older pay stations (Unitech, Hamilton, Exacta, etc.), meter boxes, vacuums, and air machines.
- Vandalism and water-resistant
- Built-in graphical timer display
- Instant power up and power down alerts through the hardware allowing our customers to instantly know if their machine goes down or comes back up to prevent loss of sales.
- Nayax builds customer engagement into their hardware:
 - a. Nayax readers speak to the customer and guides them through the transaction by voice and says thank you when completed.
 - b. Monyx Rewards and Loyalty Wallet App – “Shake Me” feature will give your customers free money after every purchase and also gives a 10% bonus (a free \$2.50 for every \$25 the customer will spend)
- Easy plug-and-play installation – Works independently. Uses Verizon or AT&T Cellular for instant connectivity and if poor Cellular in a location, we have built in a LAN/Wifi Port for your convenience.
- Fixed Rate Low-Cost Processing – Easy flat fee statements - No dealing with complex Interchange Plus and the variable fees added on standard processing statements that force you to pull out a calculator every month to calculate your net fee each month.
- MOMA - Phone App to see sales from the ease and comfort of your cell phone.
- Integrated with the best Car Wash Specific Reward and Loyalty Apps in the market - Beacon Mobile and others coming soon
- Fleet Card System – Create your Own Gift Cards. Add Money as you desire. Autofill, carry over unused balances.
- Advanced hi-resolution graphical display allows you to brand the reader with your own graphics and messaging.
- Instant Receipts and Instant Refunds To Your Customers
- 99.9% uptime guaranteed uptime servers
- Multi Language – Switch Between

IT IS HIGHLY RECOMMENDED THAT THIS ACCEPTOR IS INSTALLED BY SOMEONE WITH PREVIOUS KNOWLEDGE OF PULSE TO ENSURE PROPER OPERATION.

\$399.00	VPOS-TOUCH	VPOS Cashless Payment System - Pulse Model
\$42.68	VPOS-TOUCH-C	Optional 24V power supply and cord for pulse model

NAYAX VPOS-TOUCH ALL IN ONE GRAPHICAL MDB CASHLESS PAYMENT SYSTEM FOR VENDING

NAYAX



NAYAX offers exclusive and important revenue generating and costs savings features coming from the international engineering leader of cashless technology. NAYAX engineers and manufacturers the cashless devices and reporting software supporting systems on nearly 500,000 unattended machines in 60+ countries and works with 45 financial institutions worldwide, accepting 26 currencies. Why does this matter to customers? Because it allows NAYAX to exclusively offer many important money-generating and efficiency features at no additional cost. VPOS TOUCH ALL-IN-ONE GRAPHICAL DISPLAY DEVICE - Best in Class .

KEY EXCLUSIVE HIGHLIGHTS AND FEATURES:

- NEW ADDITION – Instant receipts
- *****(NO CHARGEBACKS)**** No swipe - EMV Both Chip and Tap Enabled and Fully 100% PCI Compliant – WITH NAYAX DEVICES WE ACCEPT THE MOST SECURE TRANSACTIONS WITH EMV CONTACT AND CONTACTLESS IN THE US. Nayax has been chip and wave card for 4 years in the US.
- Vandalism and water-resistant
- Built-in graphical timer display
- Instant power up and power down alerts through the hardware allowing our customers to instantly know if their machine goes down or comes back up to prevent loss of sales.
- Nayax builds customer engagement into their hardware:
 - a. Nayax readers speak to the customer and guides them through the transaction by voice and says thank you when completed.

b. Monyx Rewards and Loyalty Wallet App – “Shake Me” feature will give your customers free money after every purchase and also gives a 10% bonus (a free \$2.50 for every \$25 the customer will spend)

- Easy Plug-and-Play Installation – Works independently. Uses Verizon or AT&T Cellular for instant connectivity and if poor cellular in a location, we have built in a LAN/Wifi Port for your convenience.
- MOMA - Phone app to see sales and adjust inventory from the ease and comfort of your cell phone
- Advanced hi-resolution graphical display allows you to brand the reader with your own graphics and messaging.
- Instant receipts and refunds to your customers
- 99.9% uptime guaranteed uptime servers
- Multi Language – switch between
- NayaxVend - Full Inventory System with MDB Live Transaction in addition to Dex
- Accepts transactions in Pre-selection Mode to prevent customer angst and confusion so that customers do not get charged a constant pre-authorization higher amount than they paid

\$353.75 VPOS-TOUCHM

CRYPTOPAY

CREDIT CARD PAYMENT SYSTEM



COST EFFECTIVE, SECURE, & SIMPLE PAYMENT SOLUTION FOR CAR WASH AND LAUNDRY

Credit and debit cards are now the preferred payment method for customer transactions in all commerce, and car washes are no exception. Allowing customers to pay any way they like attracts new people to your car wash and may even increase how much your existing customers spend. CryptoPay is the easiest and most secure way to integrate credit card payment into your car wash business!

THE RISE OF CREDIT CARD USE

In a 2017 study conducted by Total System Services, a U.S. credit card processor, they asked over 1,000 consumers the question: "When given a choice, what payment form do you prefer?" 44% of them answered that they prefer debit card, 33% responded that they like credit cards, and 12% favored paying in cash. In addition, a 2016 Gallup poll found that only 10% of Americans use cash for all of their purchases, down from 19% in 2011.

It's clear that consumer behavior is trending heavily towards card usage. Adding or expanding card payment should be on the radar of your car wash.



SECURITY IS A PRIORITY

Having card payment equipment installed at your business is only part of the effort to get your customers to actually swipe. Consumers, for good reason, are very concerned about the safety of their data in the days of data breaches and identity theft. CryptoPay proudly makes security the first selling point of their system, going so far as to proclaim that their security 'Simply Stops Fraud'. But how can they make that claim?

CryptoPay transactions are immediately encrypted when a customer swipes their card. Encryption, in a basic sense, turns card data into a complicated code. This adds a very difficult layer of security for those attempting to steal the data. Since this encryption happens immediately, a customer's data is never vulnerable to theft. Marketing this to customers makes them comfortable with swiping, and you can be confident knowing that security is CryptoPay's top concern!

FEATURED PRODUCT

THE 3 IMPORTANT COMPONENTS OF CRYPTOPAY



CRYPTOPAY SWIPER

\$399.99 CPS3005



CRYPTOPAY COORDINATOR

\$374.99 CPS3000



ONLINE CLOUD MANAGEMENT

GO TO MYCRYPTOPAY.COM/LOGIN

EASY INSTALLATION, VERSATILITY, AND AFFORDABILITY

The small footprint and simple installation of the CryptoPay system is truly amazing. A swiper is easily mounted onto equipment with two installation screws. Wiring of the swiper includes two power wires and an output wire to the timer on the machine.

You can install and manage many swipers on your property with one coordinator and the MyCryptoPay online management portal. All communication to and from the swipers is wireless, so there is no need to run any Cat5 wire.

When a customer visits your wash, all swipes with the same card - within two hours - are combined into one transaction. That means that you only pay one transaction fee for each customer's visit. For instance, if a customer goes through your tunnel, vacuums their car, and buys an air freshener with the same card, you will only be charged one fee. This is possible through an innovative technology called CryptoPay Consolidation.

CRYPTOPAY ACCESSORIES

Depending on your machines, you may need to pick up some specialized equipment or a retrofit kit to use CryptoPay. You may also want to purchase signage that will guide your customers through the process of using CryptoPay.

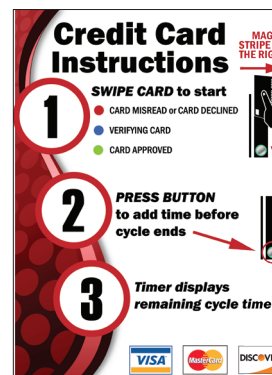
CRYPTOPAY GOLD LINE RETROFIT KIT



- Upgrade your existing Hamilton Gold Line to use CryptoPay
- Go-Green Online Receipt Service (Incl. for 1 year)
- Lexan Face Plate provides a fresh, clean, modern look

\$1,300.00 CPS3030

CRYPTOPAY COUNTDOWN SIGN



- 10" x 12" polystyrene sign that instructs customers on how to use the CryptoPay swiper on a countdown timer

\$12.50 CPS3015T

CRYPTOPAY CREDIT CARD PAYMENT SYSTEMS

U.S. USE ONLY



CRYPTOPAY WIRELESS CREDIT CARD SYSTEM CRYPTOPAY



- The CryptoPay Wireless Credit Card System reduces fees, secures your transactions, and simply stops fraud. The system is composed of three main building blocks: The MyCryptoPay Online Program, CryptoPay Coordinator Unit, and one or more CryptoPay Swipers.
- The MyCryptoPay Online Program allows you to view recent purchases, configure your CryptoPay Swipers, and ensure your system is up and running remotely from your computer or mobile device.
- The CryptoPay Coordinator unit wirelessly and securely transmits to each of the CryptoPay Swipers. The Coordinator connects to the internet and authorizes and finalizes transactions, and is used to remotely re-configure the swipers. One coordinator is needed per wash location and supports many Swipers.
- The CryptoPay Wireless Swiper encrypts credit card data at the moment of credit card swipe and securely transmits the encrypted data. Encrypted data can only be decrypted by the Magensa Protected Payment Gateway. The Magensa Protected Payment Gateway is PCI-DSS certified and listed by MasterCard and Visa as a compliant service provider.
- True end-to-end transaction security that 'simply stops fraud'.
- Engineered to reduce fees with CryptoPay Consolidation.
- Simple, which makes it affordable and easy to install - rugged enough to survive in a carwash environment

CRYPTOPAY HAS NEW SWIPERS FOR GLASS FRONT VENDING MACHINES & LAUNDRY!

- Supports MDB Level 2 machines and included a Daisy Chain Cable to connect to other MDB Devices.

BEST PART?

- NO MONTHLY FEES
- CryptoPay Transaction Consolidation

\$374.99	CPS3000	CryptoPay Coordinator
\$399.99	CPS3005	CryptoPay Credit Card Swiper
\$374.99	CPS3005-10D	Vending Swiper for Laurel Drop Shelf - Call for Details and Machine Compatibility
\$399.99	CPS3005-15	CryptoPay Swiper (with out button) for vacuums
\$389.99	CPS3005-20	Vending Swiper for Glass Front Vending Machines - Call for Details and Machine Compatibility
\$424.99	CPS3005-25	Laundry Swiper with Power Adapter
\$6.50	CPS3010	CryptoPay Cat 5 Ethernet Cable
\$66.88	CPS3025	Locking Side Mount Box for Swiper
\$145.91	CPS3025-V	Side Mount Box for Vacuums - Cutouts for Dixmor LED7 timer and CryptoPay swiper



CRYPTOTAP CONTACTLESS PAYMENT UNIT CRYPTOPAY

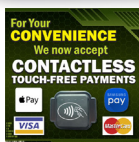


- CryptoTap is a new contactless payment device from the makers of CryptoPay. With a simple wire hookup and three drilled installation holes, your car wash is ready to accept virtually any contactless payment types using phones and cards. This system must be used with the CryptoPay system, which includes a swiper and a coordinator. You can use it with your existing system or purchase new Cryptopay equipment. Customers will love the speed, convenience, and safety of contactless payment at your car wash business!

SPECIFICATIONS AND FEATURES:

- Dimensions: approximately 4" x 4"
- 24V power requirement
- Mount beside or very close to CryptoPay swiper
- Installs by connecting two 24V power wires and drilling three installation holes
- Once powered, it will pair with the CryptoPay network - true "plug-and-play"
- Fast, safe, secure payment with absolutely no contact
- Accepts Apply Pay, Samsung Pay, and almost all other contactless phone and card payment types
- PCI Compliant

\$350.00	CPS3008	CryptoTap
\$14.20	SIKR076	12" x 12" Sign
\$113.21	BANNER3814	3' x 8' Banner



ACCEPTING CREDIT CARDS AT A SELF-SERVE OR AUTOMATIC CAR WASH IS A GROWING TREND...



The benefits seem to be obvious; credit card customers will add new revenue, credit card customers spend more money, the younger generation doesn't carry cash, and so forth. So why aren't car wash owners getting on the bandwagon by accepting credit cards?

EQUIPMENT

CRYPTOPAY RETROFIT KITS

U.S. USE ONLY

GOLD LINE RETROFIT KIT - CPS3030



UNITEC WASH SELECT RETROFIT KIT - CPS3040



CRYPTOPAY RETROFIT KITS FOR HAMILTON GOLDLINE, ACW4, ACW5 & UNITEC WASH SELECT

CRYPTOPAY



- Secure credit card processing that simply stops fraud at the point of credit card swipe
- Reduce your fees with CryptoPay Consolidation
- GoGreen Online Receipt Service (Included for 1 year)

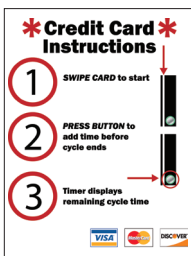
- Reduce card verification time utilizing broadband internet speed
- New Lexan Face Plate provides a fresh, clean, modern look*

\$1,300.00	CPS3030	***Retrofit Kit - Gold Line (Includes Lexan, Swiper, Red LED Display, Circuit Board, Hardware Kit, GoGreen Sign
\$1,300.00	CPS3040	*Retrofit Kit - Unitec

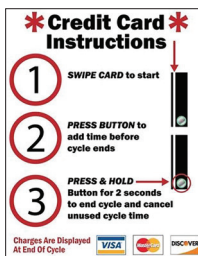
BUTTONS SOLD SEPARATELY - HCP499305 (BLUE) & HCP499373 (RED)

* VINYL DECAL (CPS3135) PROVIDED WITH UNITEC RETROFIT KIT

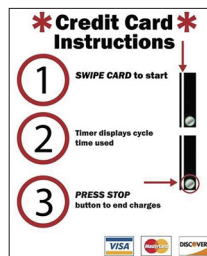
CRYPTOPAY SIGNS AND DECALS



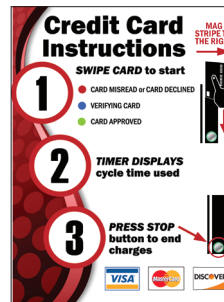
CPS3017T



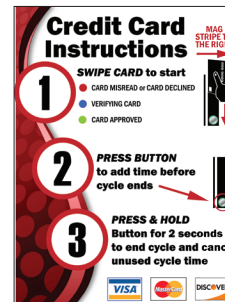
CPS3017D



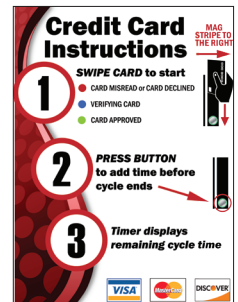
CPS3017



CPS3015



CPS3015D



CPS3015T

CRYPTOPAY INSTRUCTION SIGNS & DECALS

CRYPTOPAY



\$12.50	CPS3015	Count Up Sign - 10" x 12"
CALL	CPS3015C	Count Up Sign - 10" x 12" - Custom
\$12.50	CPS3015D	"Advanced" Count Down Sign - 10" x 12" For use with Dixmor Timers made after 2005
\$12.50	CPS3015T	Count Down Sign - 10" x 12" - For Use with Dixmor Timers made before 2005 and all other count down timers
\$0.98	CPS3017	Count Up Decal - 4" x 5"
\$0.98	CPS3017D	Count Down Decal - 4" x 5" For use with Dixmor Timers made after 2005
\$0.98	CPS3017T	Count Down Decal - 4" x 5" - For Use with Dixmor Timers made before 2005 and all other count down timers

IDX CREDIT CARD SYSTEMS



POWER RELAY IDX PAYMENT SYSTEMS



- Allows any timer to be a count up timer
- Power handling relay for count up credit card systems to handle the load required in the car wash, use with IDX Card Solution, CryptoPay, Unitec & other systems

\$42.81 **IDXMA79**



If there is one investment that you should undertake for your car wash in the next year, adding credit card acceptance is it. Credit cards will result in an increase to your overall revenue. Credit card users spend anywhere from 30% to 50% more than cash customers on each transaction. Credit card users also wash more frequently since they are not constrained by the quarters or bills in their possession. Based on the demographics of your location (average household income, blue/white collar workers, ethnicity, etc), after the first year of operation credit cards will account for between 17% and 50% of your overall sales. So if you do the math, after your first year of credit card acceptance, your gross sales should be anywhere from 6% to 15% greater than when you were a cash only business.

STORAGE TANKS



MOTORIZED MIXING TANK EQUIPMENT

SPECIFICATIONS:

- 55 gallon capacity
- 1/2 HP TEFC motor
- 115V AC
- Single phase
- Durable thick plastic
- 1/2" plastic lid
- Stainless steel hinge

\$1,259.20 **KRMT**



VERTICAL ROUND STORAGE TANKS DEN HARTOG



- Vertical tanks are free standing with a flat bottom for indoor or outdoor installations. Tanks are manufactured from a medium or high density polyethylene with UV inhibitors. Tank walls are translucent for level viewing and are equipped with gallon indicators.

PRICE	PART #	CAPACITY	SIZE	FITTING
\$131.90	SVT0020	20 Gallon	16" D x 28" H	3/4"
\$110.14	SVT0025	25 Gallon	18" D x 30" H	3/4"
\$136.23	SVT0040	40 Gallon	18" D x 43" H	3/4"
\$196.53	SVT0065	65 Gallon	23" D x 42" H	1"
\$211.56	SVT0075	75 Gallon	23" D x 50" H	1"
\$283.67	SVT0100	100 Gallon	28" D x 45" H	1"
\$393.63	SVT0210	210 Gallon	40" D x 49" H	2"



TANKS WITH METAL FRAMES EQUIPMENT

TA0410	Single Tank
TA0420	Double Tank (shown)
TA0430	Triple Tank
CALL	

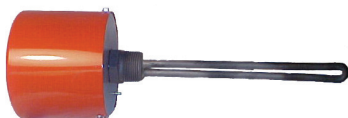


OPEN TOP SQUARE STORAGE TANKS CHEM-TAINER EQUIPMENT

- Polyethylene tanks for chemical storage
- Translucent for visible contents level. Rated to 140°F
- Lids included on most models, indicated where sold separately

PRICE	PART #	CAPACITY	SIZE
\$134.00	SOT0005	5 Gallon	10" W x 16" L x 8" H
\$76.00	SOT0005V	3 Gallon Vertical	6" W x 12" L x 12" H
\$140.70	SOT0011	11 Gallon	12" W x 12" L x 18" H
\$176.88	SOT0022	22 Gallon	12" W x 24" L x 18" H
\$194.30	SOT0037	37 Gallon *	18" W x 24" L x 18" H
\$581.56	SOT0040	40 Gallon Open Top *	18" W x 30" L x 18" H
\$124.62	SOT0040LID	Lid for 40 Gallon Open Top	-

*** LID SOLD SEPARATELY**



WATLOW STAINLESS STEEL 1" TANK HEATER WITH THERMOSTAT EQUIPMENT



BULK HEAD FITTINGS EQUIPMENT

\$5.77	TA0310	1/2" PVC
\$5.95	TA0315	3/4" PVC
\$6.86	TA0320	1" PVC
\$10.45	TA13118	1/2" Brass
\$8.33	TA13121	3/8" Brass

\$243.03	WH0500-120	120V	Heats to: 230°F
\$218.44	WH0500	240V	Heats to: 110°F

EQUIPMENT

WALL PANELS



PVC DOORS WITH PANELS



CAR WASH WALL & CEILING PANELS

EPI/EXTRUTECH

CUSTOMIZED TO FIT YOUR CAR WASH NEEDS!

- Standard size - 12", 16", and 24" panel widths - cut to the inch from 3'-20' lengths

FEATURES:

- Waterproof and rot-proof - for use on interior walls and ceilings. Maintenance-free, easy to clean, durable.
- Brightens the interior for a fresh clean appearance that quickly sheds water
- Tongue and groove design, installs quickly and easily with no exposed fasteners
- Meets Class A for smoke and flame spread, ASTM E84-09 and CAN/ULC S102.2-3, ICC ESR-4583
- 20-Year Warranty on wall and ceiling liner panels
- Rustproof PVC doors also available
- Trims available at 8', 10', 12', 14' & 16' lengths

EPP1300	1/2" x 12" White Flat Panel (per ft)
EPP1300SS	1/2" x 12" Flat Panel - Beige
EPP1600	1/2" x 16" Flat Panel - White
EPP2400	1/2" x 24" Flat Panel - White
EPP3000	1/2" White Beaded Panel (per ft)
EPP0100	1/2" White J-Trim (per ft)
EPP0270	Floor Cove, Inside Corner Trim
EPP0220	1/2" White Outside Corner (per ft)

EPP0231	Large H-Bar (per ft)
EPB0350	3.5" x 5/8" Foam Board (per ft)
EPB0550	5.5" x 5/8" Foam Board (per ft)
EPC0100	Window Sill (per ft)
EPWM356	Colonial Casing (per ft)
EPWM390	Chair Rail (per ft)

CALL FOR PRICING

IN-BAY AUTOMATIC



2 1/4" PARTITION WALL PANEL SYSTEM

EPI/EXTRUTECH

- Smooth wall panel with a bright-white, glossy surface on both sides. This panel is waterproof, will never rust, rot, corrode, or fade. The panel is easy to clean and ideal for high-moisture areas where daily sanitation is critical.

BENEFITS/FEATURES:

- Sanitary - easy to clean
- Low-maintenance
- Ideal for high-moisture area
- Waterproof - no rot or rust
- Highly reflective
- 15-year warranty
- Stain-resistant
- Installs quickly and easily

EPP0224	2 1/4" x 24" W Linear Wall Panel	3'-24' Lengths
EPP0224-I	2 1/4" x 24" W Linear Wall Panel, Insulated	3'-24' Lengths
EPP0125	U-Channel for P224 Wall Panel	16'

EPP0225	Fitted Corner for P224 Wall Panel	8', 16'
EPP0226	Slip-On Corner for P224 Wall Panel	8', 9', 16', 18'

CALL FOR PRICING

SELF-SERVICE



OTHER COLORS AVAILABLE!
(Color Panel Available in 1 Ft. Widths Only)

BEADED PANELS ARE IDEAL FOR CEILINGS
(EPP3000)

SMOOTH LINER PANELS ARE PERFECT FOR WALLS & CEILINGS
(EPP1300, EPP1600, EPP2400)

PARTITION WALL PANELS ARE PERFECT FOR AREAS WITH HIGH MOISTURE CONTENT
(EPP0224, EPP0224-I)

WALL CLEANERS



IT WORKS NATIONAL

- 5-Gallons
- Ratios: straight - 20:1
- Spray on with low pressure and spray off with high pressure
- A powerful liquid detergent designed for cleaning plastic wall panels

\$52.21 NAP5408



KLEAN WALL AP FORMULATORS

- 5-Gallons
- Spray on, rinse off
- Makes the dreaded task of cleaning bay walls easy
- Works on painted walls, glazed tile, fiberglass, brick and metal

\$76.63 KW5



*****POISONOUS***
MUST SHIP FREIGHT**



KLEAN WALL II AP FORMULATORS

- 5-Gallons
- 100% HF-Free
- No scrubbing required
- SDS and label have NO poison restrictions
- Made in the U.S.A.

\$76.63 KW5-2



CALIFORNIA PROPOSITION 65 NOTE: some items on this page may fall under the Proposition 65 act. Please consult the State of California Proposition 65 list (oehha.ca.gov/proposition-65/proposition-65-list) to learn more and to see a comprehensive list of Proposition 65 chemicals.

DOORS



BAYWATCH POLYCARBONATE DOORS

BAY DOORS



- The BayWatch polycarbonate door provides the highest levels of security and heat retention. Its triple wall polycarbonate panels and anodized aluminum door panel frames give you a superior quality finish that is unmatched in the industry. Only the most durable and highest grade door parts, such as a stainless steel shaft and brackets, plastic hinges and stainless steel zerk bearings, are used. Full vision panels, for optimal visibility, and custom doors for any bay size, are also available.

PART #	DESCRIPTION/FEATURES	# OF DOORS	STYLE
PDP-1008-S	10'2" x 8' - STANDARD POLYCARBONATE DOOR PACKAGE: One (1) - 10'2" x 8' door, hardware package, standard electronic door controller, Accessories (includes all safety sensors) and hardware for operator package and motor package	1	Standard
PDP-1008-P	10'2" x 8' - INTELLIWATCH PREMIUM POLYCARBONATE DOOR PACKAGE WITH E-MAIL NOTIFICATION: Set of two (2) 10'2" x 8' doors, 4.3" in-store/office monitor with remote access and instant e-mail notification, hardware package, premium electronic door controller, accessories (includes all safety sensors) and hardware for operator package and motor package.	2	Premium
PDP-1010-S	10'2" x 10' - STANDARD POLYCARBONATE DOOR PACKAGE: One (1) - 10'2" x 10' door, hardware package, standard electronic door controller, accessories (includes all safety sensors) and hardware for operator package and motor package.	1	Standard
PDP-1010-P	10'2" x 10' - INTELLIWATCH PREMIUM POLYCARBONATE DOOR PACKAGE WITH E-MAIL NOTIFICATION: Set of two (2) 10'2" x 10' doors, 4.3" in-store/office monitor with remote access and instant e-mail notification, hardware package, premium electronic door controller, accessories (includes all safety sensors) and hardware for operator package and motor package.	2	Premium
PDP-1210-S	12'2" x 10' - STANDARD POLYCARBONATE DOOR PACKAGE: One (1) - 12'2" x 10' door, hardware package, standard electronic door controller, accessories (includes all safety sensors) and hardware for operator package and motor package	1	Standard
PDP-1210-P	12'2" x 10' - INTELLIWATCH PREMIUM POLYCARBONATE DOOR PACKAGE WITH E-MAIL NOTIFICATION: Set of two (2) 12'2" x 10' doors, 4.3" in-store/office monitor with remote access and instant e-mail notification, hardware package, premium electronic door controller, accessories (includes all safety sensors) and hardware for operator package and motor package.	2	Premium
PDP-1212-S	12'2" x 12' - STANDARD POLYCARBONATE DOOR PACKAGE: One (1) - 12'2" x 12' door, hardware package, standard electronic door controller, accessories (includes all safety sensors) and hardware for operator package and motor package.	1	Standard
PDP-1212-P	12'2" x 12' - INTELLIWATCH PREMIUM POLYCARBONATE DOOR PACKAGE WITH E-MAIL NOTIFICATION: Set of two (2) 12'2" x 12' doors, 4.3" in-store/office monitor with remote access and instant e-mail notification, hardware package, premium electronic door controller, accessories (includes all safety sensors) and hardware for operator package and motor package.	2	Premium

CLEAR VISION UPGRADE OPTIONS

PART #	DESCRIPTION
CVP-10	10' 2" x 24" Clear Vision Upgrade. (Applies only with complete door package).
CVP-10-2P	10' 2" x 24" Two panel Clear Vision Upgrade Package. Includes spring package upgrade. (Applies only with complete door package).
CVP-10-3P	10' 2" x 24" Three Panel Clear Vision Upgrade Package. Includes spring package upgrade. (Applies only with complete door package).
CVP-12	12' 2" x 24" Clear Vision Upgrade. (Applies only with complete door package).



BAYFLEX VINYL DOORS

BAY DOORS



- The BayFlex vinyl door was developed specifically for harsh car wash environments. With corrosion-resistant materials and a Break-Away design, it is engineered for high-volume car wash applications that demand low-maintenance doors. The design eliminates pneumatics, cables, hinges, belts, drums, pulleys and other parts for years of trouble-free operation. BayWatch is the only company that offers a balanced drum, eliminating the curtain weight.

PART #	DESCRIPTION/FEATURES	# OF DOORS	STYLE
10' X 8' VINYL DOORS & UPGRADE			
VDP-1008-S	10' x 8' - STANDARD VINYL DOOR PACKAGE: One (1) 10' x 8' door, balance drum, hardware and safety package, standard electronic door controller, two clear-view sections and motor package with molded plastic cover.	1	Standard
VDP-1008-P	10' x 8' - INTELLIWATCH PREMIUM VINYL DOOR PACKAGE WITH E-MAIL NOTIFICATION: Set of two (2) 10' x 8' doors, 4.3" in-store/office monitor with remote access and instant e-mail notification, balance drum, hardware and safety package, premium electronic door controller, two clear-view sections and motor package with molded plastic cover.	2	Premium
VDP-1008-3P	10' x 8' - UPGRADE TO THREE (3) CLEAR-VIEW PANELS	-	-
10' X 10' VINYL DOORS & UPGRADE			
VDP-1010-S	10' x 10' - STANDARD VINYL DOOR PACKAGE: One (1) 10' x 8' door, balance drum, hardware and safety package, standard electronic door controller, two clear-view sections and motor package with molded plastic cover.	1	Standard
VDP-1010-P	10' x 10' - INTELLIWATCH PREMIUM VINYL DOOR PACKAGE WITH E-MAIL NOTIFICATION: Set of two (2) 10' x 8' doors, 4.3" in-store/office monitor with remote access and instant e-mail notification, balance drum, hardware and safety package, premium electronic door controller, two clear-view sections and motor package with molded plastic cover.	2	Premium
VDP-1010-3P	10' x 10' - UPGRADE TO THREE (3) CLEAR-VIEW PANELS	-	-
12' X 10' VINYL DOORS & UPGRADE			
VDP-1210-S	12' x 10' - STANDARD VINYL DOOR PACKAGE: One (1) 10' x 8' door, balance drum, hardware and safety package, standard electronic door controller, two clear-view sections and motor package with molded plastic cover.	1	Standard
VDP-1210-P	12' x 10' - INTELLIWATCH PREMIUM VINYL DOOR PACKAGE WITH E-MAIL NOTIFICATION: Set of two (2) 10' x 8' doors, 4.3" in-store/office monitor with remote access and instant e-mail notification, balance drum, hardware and safety package, premium electronic door controller, two clear-view sections and motor package with molded plastic cover.	2	Premium
VDP-1210-3P	12' x 10' - UPGRADE TO THREE (3) CLEAR-VIEW PANELS	-	-

EQUIPMENT

WAX APPLICATION

HOT WAX & SHINE

SIMONIZ



- Simoniz Hot Wax & Shine is a great new service with attention-grabbing visual appeal! This unique application actually applies carnauba wax to the entire vehicle right inside your car wash tunnel.



EQUIPMENT

SIMONIZ



SIMONIZ EQUIPMENT ARCH - FOR TUNNEL WASH WITH CONVEYOR ONLY

CALL FOR PRICE	SM11000	Includes: Simoniz Bubblizer Tunnel Application Arch, Dosatron Pumping Station, Yellow LED Lighting Package, Simoniz Hot Wax & Shine Electric Tunnel Sign, 30 Gallons of Simoniz Hot Wax and Shine, driveway marketing materials. Requires 119" H, 130" W and 28" floor clearance per side pillar.	

HOT WAX & SHINE SELF-SERVE PACKAGES

SIMONIZ

SELF SERVE DECALS AVAILABLE!



2 BAY PACKAGE INCLUDES:

CALL	KRKS5000-2	1 Simoniz Hot Wax & Shine - 5 Gal.	2 Orange triple foam guns & nozzles	2 Red, 25 ft. coiled foamy hose tubes	2 Simoniz® HW&S bay signs
			2 Stainless steel triple foam gun holders	2 Foamy hose holders	2 Simoniz® HW&S rotary decals

3 BAY PACKAGE INCLUDES:

CALL	KRKS5000-3	1 Simoniz Hot Wax & Shine - 5 Gal.	3 Orange triple foam guns & nozzles	3 Red, 25 ft. coiled foamy hose tubes	3 Simoniz® HW&S bay signs
			3 Stainless steel triple foam gun holders	3 Foamy hose holders	3 Simoniz® HW&S rotary decals

4 BAY PACKAGE INCLUDES:

CALL	KRKS5000-4	2 Simoniz Hot Wax & Shine - 5 Gal.	4 Orange triple foam guns & nozzles	4 Red, 25 ft. coiled foamy hose tubes	4 Simoniz® HW&S bay signs
			4 Stainless steel triple foam gun holders	4 Foamy hose holders	4 Simoniz® HW&S rotary decals

5 BAY PACKAGE INCLUDES:

CALL	KRKS5000-5	2 Simoniz Hot Wax & Shine - 5 Gal.	5 Orange triple foam guns & nozzles	5 Red, 25 ft. coiled foamy hose tubes	5 Simoniz® HW&S bay signs
			5 Stainless steel triple foam gun holders	5 Foamy hose holders	5 Simoniz® HW&S rotary decals

6 BAY PACKAGE INCLUDES:

CALL	KRKS5000-6	3 Simoniz Hot Wax & Shine - 5 Gal.	6 Orange triple foam guns & nozzles	6 Red, 25 ft. coiled foamy hose tubes	6 Simoniz® HW&S bay signs
			6 Stainless steel triple foam gun holders	6 Foamy hose holders	6 Simoniz® HW&S rotary decals

7 BAY PACKAGE INCLUDES:

CALL	KRKS5000-7	3 Simoniz Hot Wax & Shine - 5 Gal.	7 Orange triple foam guns & nozzles	7 Red, 25 ft. coiled foamy hose tubes	7 Simoniz® HW&S bay signs
			7 Stainless steel triple foam gun holders	7 Foamy hose holders	7 Simoniz® HW&S rotary decals

8 BAY PACKAGE INCLUDES:

CALL	KRKS5000-8	4 Simoniz Hot Wax & Shine - 5 Gal.	8 Orange triple foam guns & nozzles	8 Red, 25 ft. coiled foamy hose tubes	8 Simoniz® HW&S bay signs
			8 Stainless steel triple foam gun holders	8 Foamy hose holders	8 Simoniz® HW&S rotary decals



HOT WAX & SHINE

SIMONIZ HOT WAX TUNNEL SYSTEMS



- Simoniz introduces a new Hot Wax application product for your tunnel and in-bay car wash systems. Now you can actually apply a carnauba wax right in your bays, getting a hand waxed finish with just the push of a button.
- Use 2 - 4 oz per car

\$160.63	PA5338	5-Gal.
\$1,004.90	DR30338	30-Gal.

AIR COMPRESSORS



CHAMPION AIR COMPRESSORS EQUIPMENT

CHAMPION

• Loaded with rugged features, splash-lubricated RV Series reciprocating compressors deliver long-lasting performance and tremendous value. Special-alloy steel reed valves provide a self-cleaning design that maintains peak performance throughout the life of the compressor. Cast iron cylinders and heads offer rugged, industrial-rated dependability. Tank mounted units are available in 5 and 7.5 horsepower models, mounted on horizontal or vertical ASME coded air receivers for maximum installation versatility. Larger 10 & 15HP sizes are available upon request.

STANDARD EQUIPMENT:

- Magnetic starters - except 5HP 3600 RPM motor
- Enclosed belt guard
- NEMA-Rated electric motors
- ASME coded receivers
- 0-300 PSIG air-pressure gauge on tank
- Preset pressure switch

AVAILABLE OPTIONS

- Vibration isolators
- Low oil level monitor
- Air cooled aftercoolers

COMPRESSOR PUMP SPECIFICATIONS

- Splash lubricated
- Alloy steel reed valves
- Industrial grade intake filter and silencer
- Two-stage design
- Oil level site glass
- 100% cast iron compressor pump
- Deep finned intercooler
- Factory filled with ChampLub AC Lubricant

PRICE	PART #	MODEL #	STYLE	GAL.	HP	PHASE	PSI	VOLTAGE
CALL FOR PRICE	ACVRV581	VRV5-8	VERTICAL	80	5	1	175	230
	ACVRV583	VRV5-8	VERTICAL	80	5	3	175	230
	ACVRV7F81	VRV7F-8	VERTICAL	80	7.5	1	175	230
	ACVRV7F83	VRV7F-8	VERTICAL	80	7.5	3	175	230
	ACVRV783	VRV7-8	VERTICAL	80	7.5	3	175	230



CHAMP LUB LUBRICANTS & PARTS EQUIPMENT

\$74.32	ACVP80	Vibration Pads
\$15.70	ACCLQT	CHAMP LUB Lubricant - Quarts
\$47.95	ACCLG	CHAMP LUB Lubricant - Gallons

GREASE FITTINGS



65°
GREASE FITTINGS

\$1.01 GF0265



STRAIGHT
GREASE FITTINGS

\$0.68 GF0200



90°
GREASE FITTINGS

\$1.00 GF0290

DRAIN VALVES

ELECTRONIC AUTOMATIC DRAIN VALVE EQUIPMENT

• Removes water from air receivers & piping systems, preventing rusting of tank & damage to tools & controls.

FEATURES:

- 1/4" Inlet & Outlet
- On Time: Adj. 1 - 15 seconds
- Off Time: Adj. 1 - 45 minutes
- 120 with plug 230, 24 Volt AC optional
- LED indicators
- Manual override

FOR AIR COMPRESSORS

- Valve Connections 1/4"
- Max operating press. 300 PSI
- Orifice 7/16"
- 3/8" or 1/2" available

FOR FILTERS

- Valve Connections 1/4"
- Max operating press. 175 PSI
- Orifice 1/8"



\$119.11	ACDRAIN	1/4" Drain Valve	\$95.90	ACFLDR	1/4" Drain Valve For Filter
\$129.24	ACDRAIN-06	3/8" Drain Valve			
\$130.88	ACDRAIN-08	1/2" Drain Valve			

WATER SOFTENERS

CALL FOR PRICING

COMMERCIAL WATER SOFTENER SYSTEM WATER SOFTENERS



REMOVES CALCIUM AND MAGNESIUM SOLIDS.

FEATURES:

- Continuous soft water with alternating twin tank design
- Regeneration based on water use to minimize salt usage and cost associated with operation
- Soft water regeneration for added performance
- Non-corroding polyglass resin tank and high-density polyethylene brine tank
- Dual guard brine operators for prevention of brine tank overflow and accurate brine selection
- Adjustable regeneration cycles for efficient water usage
- High-capacity, long-life cation exchange resin
- Pre-plumbed manifolds reduce field installation expense
- 25 to 125 PSI
 - 100°F maximum temperature
- 24V, 110V, or 220v-50Hz electrical
 - 5-cycle regeneration (backwash, brine draw, slow rinse, fast rinse, and service)



SHOWN WITH BRINE TANKS

PURE QUALITY REVERSE OSMOSIS SYSTEM

REVERSE OSMOSIS SYSTEMS

THE PURE QUALITY REVERSE OSMOSIS SYSTEM FROM GINSAN

FEATURES:

- 600 - 8800 GPD system configurations
- Stainless steel pressure vessels
- Stainless steel multi-stage centrifugal pump
- Permeate flow meter
- Concentrate flow meter
- Digital TDS meter
- Low pressure safety cut off
- Liquid filled pressure gauges
- 20" pre filter
- Simple installation
- High flow, low energy membranes
- Low energy consumption
- Compact system design
- Individually wet-tested and preserved
- Made in U.S.A.

STANDARD

- **MEMBRANE:** 2½" x 40" / 4" x 40" HF4 membrane elements. Focuses on high permeate flow / low energy
- **MEMBRANE HOUSING:** 2½" x 40" / 4" x 40" stainless steel pressure vessels
- **PUMP AND MOTOR:** 1½ or 2 HP Berkley Centrifugal pump and motor (Procon® on 600 & 1200 GPD models)
Units are configured for 208/230 VAC single phase
- **PRESSURE GAUGES:** Shock and UV resistant liquid filled gauges used for superior quality, accuracy and durability
- **INLET SOLENOID VALUE:** Automatically shuts off feed water to the system

OPTIONS:

WATER SAVER or AUTO-FLUSH

CARBON FILTER SOLD SEPARATELY



PURE QUALITY RO SYSTEM

PURE QUALITY REVERSE OSMOSIS SYSTEM UNITS

REVERSE OSMOSIS SYSTEMS

Item #	Description	Compatible filter
R0600	Reverse Osmosis System 600 GPD, Floor Mount	R06763000
R01200	Reverse Osmosis System 1200 GPD	R06763000
R02200	Reverse Osmosis System 2200 GPD	R06763000 or R067631-WL
R04400	Reverse Osmosis System 4400 GPD	R067631-WL
R04400-WSAF	Production RO - 4400 GPD, Floor Mount	R067631-WL
R06600	Pure Quality RO 6600 GPD	R067632-A
R08800-WSAF	RO Floor Mount System 8800 GDP with Water Saver / Auto Flush	R067632-A

DELIVERY UNITS

REVERSE OSMOSIS SYSTEMS

GS100732	Floor Mount Delivery Stand 1 Automatic Bay
GS100733	Wall Mount Delivery Stand 1 Automatic Bay
GS100736	Floor Mount Delivery Stand 1-7 SS Bays
GS100737	Wall Mount Delivery Stand 1-8 SS Bays
GS100740	Floor Mount Deliver Stand 1 Auto1-7 SS Bays
GS100741	Wall Mount Deliver Stand 1 Auto1-7 SS Bays

PURE QUALITY CARBON FILTERS

REVERSE OSMOSIS SYSTEMS

R06763000	Carbon Filter, Automatic Backwashing 1 Cubic Foot, 600/1200/2200 GPD
R067631-WL	Carbon Filter, Automatic Backwashing, 2.5 Cubic Foot, 2200/4400 GPD
R067632-A	Carbon Filter, Automatic Backwashing, 3 Cubic Foot, 6600/8800 GPD



DELIVERY UNIT

WATER SOFTENERS

PRO POWER WATER SOFTENERS



- High-quality water is an essential component to any successful carwash operation. Soft water will improve the efficiency and life of your RO equipment, while at the same time reducing overall chemical costs by 10% or more! If you've ever faced challenges with scaling or plugged nozzles due to hardness/scale, then a PRO power Water Softener is just the solution you need!



DFS 1" SERIES TWIN ALTERNATING SOFTENERS

PRO POWER WATER SOFTENERS



- The DFS Series is the most cost-effective way to ensure 24/7 soft water for your car wash. This twin system features a single control valve, ensuring one tank is always on line while the other is regenerating.
- Noryl, electronic, metered control valve includes by-pass assembly with integrated inlet & outlet valves and MPT (PVC) fittings

PART #	RESIN CAPACITY PER TANK/TOTAL	FLOW RATE (CONTINUOUS)
DCS2100	30,000/60,000	13 GPM
DCS2110	60,000/120,000	16 GPM



DRS 1" SERIES

PRO POWER WATER SOFTENERS



- Simple 3-step programming
- High-efficiency metered system with demand initiated regeneration and override function.
- Large LED display
- Includes pre-installed bypass valve
- WQA tested - complies with ANSI/NSF44 performance & 372 lead free compliance.
- **SUPER LOW COST** - Simple set-up & operation!

PART #	RESIN CAPACITY PER TANK/TOTAL	FLOW RATE (CONTINUOUS)
DCS1110	30,000	15 GPM

IDEAL FOR LOWER VOLUME APPLICATIONS



DCS 1½" & 2" SERIES

PRO POWER WATER SOFTENERS



- Sized for softening all water in a car wash!
- Up to 99 GPM continuous & 130 GPM peak flow rates
- Built tough - Epoxy coated lead-free brass valve body & stainless steel flow meter
- Fully programmable regeneration settings
- **OPTIONAL PRE-PLUMBED HEADER AVAILABLE. SEE BELOW**

SIZE	PART #	RESIN CAPACITY PER TANK/TOTAL	FLOW RATE (CONTINUOUS)
1.5"	DCS2020	90,000/180,000	33 GPM
	DCS2025	180,000/360,000	43 GPM
	DCS2030	120,000/240,000	47 GPM
2.0"	DCS2035	210,000/420,000	66 GPM
	DCS2040	300,000/600,000	73 GPM
1.5"	DCS1020	90,000	33 GPM
	DCS1025	180,000	43 GPM
	DCS1030	120,000	47 GPM
2.0"	DCS1035	210,000	66 GPM

2-TANK METERED
TWIN ALTERNATING

1-TANK METERED
OR TIME CLOCK
SINGLE



DCS 1" & 1¼" SERIES

PRO POWER WATER SOFTENERS



- Ideal for softening chemical/presoak water and feeding RO systems
- Up to 28 GPM continuous & 37 GPM peak flow rates
- Built to last - corrosion resistant noryl control valve body
- Integrated flow meter
- Fully programmable regeneration settings
- Turn-key system - bypass assembly included

SIZE	PART #	RESIN CAPACITY PER TANK/TOTAL	FLOW RATE (CONTINUOUS)
1.25"	DCS2010	75,000/150,000	24 GPM
	DCS2015	120,000/240,000	25 GPM
1.0"	DCS1000	45,000	15 GPM
	DCS1005	90,000	19 GPM
1.25"	DCS1010	75,000	24 GPM
	DCS1015	120,000	25 GPM

2-TANK METERED
TWIN ALTERNATING

1-TANK METERED
OR TIME CLOCK
SINGLE

DCS 1½" & 2" SERIES PRE-PLUMBED HEADERS

PRO POWER WATER SOFTENERS



- Concerned about costly delays and expensive plumber bills during the installation of your twin water softener? Let us take care of it for you with a custom-built pre-plumbed copper header. All you have to do is connect to the common inlet, outlet and drain and you are ready to start it up!
- Pressure-tested to be free of leaks
- Completely turn-key - includes (2) inlet, (1) outlet, and (1) by-pass valves
- Easy access for maintenance - includes 5 unions • PVC (SCH.80) OPTION AVAILABLE!



PART #	DESCRIPTION
DCS6150	Copper Pre-Plumbed Header for 1½" Twin Softener
DCS6200	Copper Pre-Plumbed Header for 2" Twin Softener



BYPASS ASSBLY.



UPPER COLLECTOR

DCF SERIES CARBON FILTERS - AUTO BACKWASHING

PRO POWER

PRO POWER

- Auto backwashing, electronic control valve
- Industrial grade carbon media & reinforced media tanks
- Upper collector to prevent media loss during start-up
- By-pass assembly with inlet & outlet valves and PVC fittings (1" or 1 1/4")

SIZE	PART #	RO SYSTEM (RECOMMENDED)	MEDIA (CU. FT.)
1"	DCF6100	1,800 & 2,400 GPD	1.0
	DCF6150	4,800 GPD	1.5
	DCF6200	7,200 GPD	2.0
	DCF6250	9,600 GPD	2.5
1 1/4"	DCF6018	12,000 GPD	5.0
	DCF6021	14,400 GPD	7.5



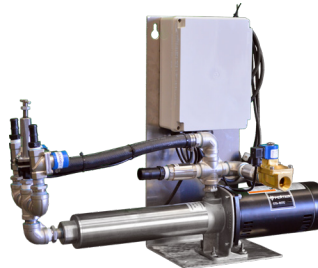
REJECT CAPTURE SYSTEM

PRO POWER

PRO POWER

- Stop throwing your money down the drain! With a Reject Capture System from PRO Power, you can save the reject water from your RO system and deliver it to another carwash application. Depending on your water costs, you can see a complete return on investment in as little as 12-18 months!
- Low limit safety float system (with 3/4" brass solenoid & bulkhead assembly)
- 230V, 1-HP pump & pressure tank, control box, power cord L6-20 plug
- Pressure switch (25/45 setting) & pressure gauge
- 100' of 3/4" ID reinforced hose

PART #	GPM	PUMP	PRESS. TANK
DCS6500	20	3/4 HP	6 Gallon
DCS6510	40	1.0 HP	19 Gallon
DCS6520	60	1 1/2 HP	32 Gallon
DCS6530	90	2.0 HP	50 Gallon



SPOT-FREE DELIVERY SYSTEMS

PRO POWER

PRO POWER

- Each delivery system will be designed and priced according to your unique wash requirements, including the following options:
- High pressure/low volume or low pressure/high volume
- Wall mount, free standing or RO frame-mounted
- 1.0, 1.5, 2.0, 2.5 or 3.0 horsepower
- 1-6 solenoids

1" IN & OUT HEAD CARBON FILTERS

PRO POWER

PRO POWER

- Lower cost - simple operating
- Includes 1" MPT (PVC) adapters (by-pass only)

1" IN & OUT VALVE

WITH BY-PASS ASSEMBLY

PART NUMBER	MEDIA (CU. FT.)
DCF6020	1
DCF6025	1 1/2



1" IN & OUT VALVE

PART NUMBER	MEDIA (CU. FT.)
DCF6000	1



VFD BOOSTER SYSTEMS

PRO POWER

PRO POWER

- Do you have issues with inconsistent water pressure and need a complete solution that you can rely on to get the job done? This system is designed to maintain constant pressures for a variety of flow demands. The simplified controls offer fully adjustable pressure from 0-100 PSI to meet most car wash industry needs.
- Pre-plumbed and pre-wired setup so you can focus on your customer
- Small footprint - 26" x 30" all-in-one frame
- Turn-key system, including pressure tank, pressure transducer, relief valve, pressure gauge and shutoff switch

PART #	FLOW	PUMP
DCS7000	70 GPM @ 40 PSI	3 HP
DCS7010	105 GPM @ 40 PSI	5 HP

RO SYSTEMS

PRO POWER

PRO POWER

- If you want to amaze your customers with the cleanest vehicle they've ever seen, then a PRO Power Reverse Osmosis System is what you need. Increase profitability by reducing or even eliminating the need for hand drying, without compromising the end result.
- Delivering enough spot-free water for even your busiest days, this turnkey system is built with high-quality components so that you can depend on its performance with minimal maintenance. Let our water treatment experts assess your needs and custom fit the option that is right for you!
- Panel Mounted Pressure Gauges, Flow Meters & RO Controller
- PVC Membrane Housings, and Thin Film Composite
- 5-Micron Pre-Filter (with 1 additional replacement filter)
- Auto Membrane Flush and Adjustable Concentrate Valve
- Corrosion-Resistant, Powder-Coated Steel Frame

STANDARD		
PART #	GPD	CARBON FILTER
DCS3012	800	DCF6100
DCS3015	9,600	DCF6250
DCS3020	12,000	DCF6018
DCS3100	2,400	DCF6100
DCS3110	4,800	DCF6150
DCS3120	7,200	DCF6200

WALL MOUNTED		
PART #	GPD	CARBON FILTER
DCS3002	1,800	DCF6100
DCS3000	2,400	DCF6100
DCS3005	4,800	DCF6150



MEMBRANES & RO SUPPLIES



New!

DOW FILMTEC RO MEMBRANES



• THIN-FILM Composite Membranes for replacement in a wide variety of Reverse Osmosis Systems. FILMTEC Brand. These membranes are designed to be used with tap water. Typical salt rejection is between 96% - 99%. Maximum operation temperature is 113°F. Chlorine pre-filters and water softeners should be used on water supply prior to entering these membranes.

225 PSI MEMBRANES

PRICE	MODEL	CROSS REF #	OD X LENGTH	FLOW
\$148.65	ROMF150	TW30-2514	14" x 2.4"	200 GPD
\$207.71	ROMF250	TW30-2521	21" x 2.4"	325 GPD
\$175.32	ROMF600	TW30-2540	40" x 2.4"	1,000 GPD
\$283.78	ROMF4021	TW30-4021	21" x 4"	900 GPD
\$278.54	ROMF2200-B-PRO	BW30-4040 (Fiberglass Wrap) For Brackish Water	40" x 4"	2400 GPD
\$274.40	ROMF2200-PRO	TW30-PRO-4040 Brackish water RO < 4" series	40" x 3.9"	2600 GPD

150 PSI MEMBRANES

\$295.50	ROMF2200LE-PRO	LCL-4040 - 600 PSIG	40" x 4"	2750 GPD
----------	----------------	---------------------	----------	----------

100 PSI LOW ENERGY (COLD WATER) MEMBRANES

PRICE	MODEL	CROSS REF #	OD X LENGTH	FLOW
\$204.23	ROMF250LE	XLE-2521	21" x 2.4"	365 GPD
\$249.81	ROMF600LEC	XLE-2540	40" x 2.4"	850 GPD
\$294.52	ROMF4021LEC	XLE-4021	21" x 4"	1025 GPD



HYDRANAUTICS RO MEMBRANES



PRICE	PART #	HYDRANAUTICS #	FILM TEC CROSS REF #	OD X LENGTH	FLOW
\$254.25	RO1000	CPA2-4040	TW30-4040	4" x 40"	2500 GPD
\$272.86	RO1010	CPA5-LD-4040	BW30-4040	4" x 40"	2100 GPD
\$264.50	RO1020	ESPA2-LD-4040	LE-4040	4" x 40"	2000 GPD
\$278.85	RO1030	ESPA4-LD-4040	XLE-4040	4" x 40"	2500 GPD

TOP SELLER!

KLEEN-RITE RO MEMBRANES



• Kleen-Rite membranes deliver the same quality as name brands but with a reduced cost. Kleen-Rite water membranes offer a permeate flow rate with great applied pressure

\$234.31	KR208333	4" O.D. x 40" L	2500 GPD	100 PSI
\$230.40	KR208396	4" O.D. x 40" L	2200 GPD	225 PSI

TOP SELLER!



ION EXCHANGE RESIN FOR WATER SOFTENING SYSTEMS



- Removes ionic impurities in small and large purification systems
- Crosslinked gel/strong acid cation resin intended for use in residential and commercial water softening applications
- Supplied in beaded sodium form - offers excellent stability across loss of pressure and change in temperature
- NSF/ANSI-44/61 certified material safety
- Polymer type: Gel
- Ionic form (as shipped): Sodium
- Resin color: Amber
- WQA Gold Seal Certified
- Functional group: sulfonic acid
- Water retention: 46-50% (Na form)
- Weight: 50 lbs.
- Polymer structure: Styrene/DVB
- Physical form: spherical beads
- Screen size dist.; +16 to -50 (US MESH)
- Quantity per container: 1 cu. Ft.

\$175.85	RORESIN
----------	---------

EQUIPMENT

FILTER & MEMBRANE ACCESSORIES



HOUSINGS FOR PREFILTER MEMBRANES

PRICE	PART #	DESCRIPTION	DIAMETER
\$54.12	ROFBBH10	10" Big Blue Filter Housing	4"
\$91.34	ROFBBH20	20" Big Blue Filter Housing	4"



12 X 52 CARBON FILTER FILTERS & MEMBRANES

- Highly effective and efficient at removing organic contaminants and chlorine to protect RO membranes
- Relatively inexpensive with no recurring cost of consumable chemicals
- Easily cleaned and maintained
- Resistant to fouling (clogging)
- Filtration media is inexpensive and long-lasting
- Control valves are modular and designed for operational flexibility

\$921.27 DCF6200



STAINLESS STEEL HOUSINGS FOR RO MEMBRANES

\$278.22	ROMFH2540	Fits 2.5 x 40 membrane
\$373.80	ROMH40	Fits 4 x 40 membrane
\$340.50	ROMH40-U	4 x 40 - U Pin Style



WRENCH BIG BLUE HOUSING FILTERS & MEMBRANES

\$3.75	RO9205	H-C9205 For AMI 10" & 20" Big Blue Housings
\$2.89	RO9200	H-C9200BK for Standard 10" Filter Housings
\$9.58	RO9203	H-C9203 For Standard 20" Filter Housings

SEDIMENT FILTERS FOR RO MEMBRANES

20" 5 MICRON
5½" DIA.

ROFCP5BB



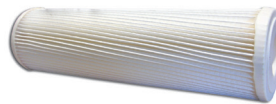
10" 5 MICRON
2½" DIA.

ROF1005



10" 5 MICRON
PRE FILTER 2½" DIA.

ROFCP5



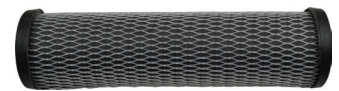
BIG BLUE 10" 5
MICRON 4" DIA.

ROFBB1005



10" X 2½" CARBON
IMPREGNATED FILTER

ROFC10



PRICE	PART #	DESCRIPTION	DIA.
\$12.28	ROFBB1005	Big Blue 10" 5 Micron RO Sediment Filter (ROFBB1005CS CASE)	4½"
\$19.42	ROFBB2001	Big Blue Filter 20" 1 Micron	4½"
\$15.74	ROFBB2005	Big Blue Filter 20" 5 Micron (ROFBB2005CS CASE)	4½"
\$37.35	ROFBB2030	Big Blue Filter 20" 30 Micron	4½"
\$45.62	ROCFBB20	Big Blue Carbon Filter 20"	4"
\$39.58	ROFC155428	Big Blue Impregnated Filter 20" 5 Micron	4½"
\$15.08	ROFC10	9¾" x 2½" Carbon Impregnated Filter	2½"
\$33.89	ROFC20	20" x 2½" Carbon Impregnated Filter	2½"
\$323.89	ROM4040AHF	40" Osmonics Style RO Membrane - 2800 GPD	4"
\$462.78	ROMB4040	40" Osmonics Style RO Membrane - 2200 GPD	4"

PRICE	PART #	DESCRIPTION	DIA.
\$3.77	ROF1001	1 Micron Sediment Filter 10"	2½"
\$4.43	ROF2001	1 Micron Sediment Filter 20"	2½"
\$17.60	ROFCP5	10" 5 Micron Pre Filter	2½"
\$13.37	ROFCP520	20" 5 Micron Pre Filter	2½"
\$35.54	ROFCP520BB	20" 5 Micron Pre Filter	4½"
\$4.72	ROF2005	20" 5 Micron RO Sediment Filter (ROF2005CS CASE)	2½"
\$306.67	ROMA4040HF	40" High-Flow RO Membrane - 2800 GPD	4"
\$2.33	ROF1005	5 Micron SDF for RO Systems	2½"
\$3.88	ROF1005STR	5 Micron String Filter	2½"
\$8.62	ROF2005STR	5 Micron String Filter	-

ACCESSORIES FOR RO MEMBRANES

LLS100



ROMHEC



ROF5100



PRICE	PART #	DESCRIPTION
\$74.89	ROMHEC	PVC End Cap for Housing (with O-Rings)
\$96.21	ROMHEC40PD1	4" PVC End Cap for Housing (with O-Rings)
\$32.97	ROMH25GWD	2.5" Dual Port End Cap (with O-Ring)
\$31.96	ROMH25GWS	2.5" Single Port End Cap (with O-Ring)
\$13.38	LLS300	Liquid Level Switch, Poly Float, Vertical Mount
\$17.03	LLS100	Liquid Level Switch, Poly Float, Horizontal Mount
\$8.25	ROORING10	O-Ring Seal Plug U4 PV
\$9.73	ROORING20	Internal O-Ring for 2.5" & 4" End Caps
\$16.40	ROORING30	O-Ring for ROFBH10

PRICE	PART #	DESCRIPTION
\$114.65	ROCARBON	Activated Charcoal
\$24.47	ROF5100	RO Storage Float Switch
\$93.54	ROGRAVEL	#100 Fine Gravel (50 lb. bag)
\$8.01	ROFHB2010W	Single Bracket for ROFH20
\$17.10	ROFHB2039W	Mounting Bracket for ROFBBH10 & 20
CALL	RO2580	2.5" Black Membrane Seal
\$27.25	ROCL40W	End Clamps for 4" Stainless Steel Membrane Housing
\$13.07	ROYCUP418	Uni-Strut Clamp
\$392.38	ROMH40PVC	4" x 40" PVC Pressure Vessel
\$57.22	ROCC2520A11	Cleaning Kit

WATER HEATERS



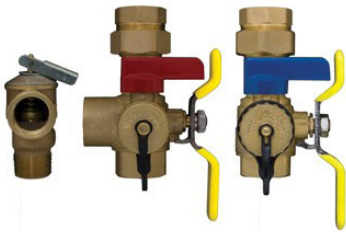
INFINITI® K SERIES TANKLESS (CONDENSING) GAS WATER HEATER INDOOR MODEL BRADFORD WHITE WATER HEATERS

- **ENERGY STAR® QUALIFIED** - Meet or exceed requirements for ENERGY STAR® per the latest ENERGY STAR® criteria revision, as well as most utility rebate programs
- **FEATURING THE SRT™ SCALE REDUCTION TECHNOLOGY** - Significantly reduces the incidence of scale build-up known to result in poor performance, additional maintenance, and pre-mature component or product failure
- **STEADISET™ TECHNOLOGY** - Virtually eliminates cold water sandwich without the need for an internal buffer tank and recirculation pump
- **BUILT-IN DIGITAL CONTROL** - Temperature can be adjusted on the front control panel (100-140°F) (38°C-60°C).
- **ACTIVE BYPASS** - Achieves superior temperature stability (±2°F) (±1°C)
- Modulation-Segmented burner with 22:1 turn down ratio
- **SELF-CALIBRATING FAN AND GAS VALVE** - Simple combustion management system uses self-calibrating sensors to automatically configure air fuel ratio for flue length, gas type, and altitude - without a combustion analyzer
- **EXTERNAL RECIRCULATION PUMP WIRING-INSTALLED** - Built-in controls provide precise operation of external recirculation pump with, or without, additional external temperature sensor (Recirculation pump sold separately)
- **VENTING FLEXIBILITY**
- **GAS CONNECTION FLEXIBILITY** - 1/2", 3/4", or 1" connections permitted
- **TOP WATER CONNECTIONS** - For easy retrofit
- **INLET WATER FILTER** - External access for easy maintenance
- **SPACE SAVING INSTALLATION** - Compact size for tight installations
- **BUILT-IN FREEZE PROTECTION** - Protects unit from freezing. Activates automatically when the water heater is plugged in
- **PRESSURE RELIEF VALVE** - Included (Integral port)
- **BUILT IN FLUSH VALVES** - For servicing/de-scaling
- **FLUSHING CONDENSATE TRAP**
- **COMPLIES WITH THE LATEST ULTRA-LOW NOX REQUIREMENT (10 NG/J NOX LIMIT)**
- **EASY LP GAS FIELD CONVERTIBILITY** - Purchase of additional kit NOT required to convert from NG to LP

PRICE	KR #	MFG #
\$1,554.11	BH0100	RTG-K-199-N1

TANKLESS WATER HEATER VALVE KIT

WATER HEATER ACCESSORIES



- Easily install separate hot and cold isolation valves and a pressure relief valve to your existing tankless water heater. Adds more safety features and benefits to your system with ease! This kit provides full port testing and flushing of the system with union connections to ensure a fully secure and safe installation!
- 2-step color-coded union connections
- Full port throughout entire valve body
- Brass construction
- Connection: 3/4" NPT
- Quarter turn ball valve operation
- Flushing and descaling capability
- Pressure: 150 PSI
- Pipe Size: 3/4"

CALL	BHP4000
-------------	----------------

BAYWATCH HEATERS

BAYHEAT ALL STAINLESS STEEL RADIANT HEATERS

BAYWATCH CAR WASH DOOR SOLUTIONS



PART #	PRODUCT	DESCRIPTION/FEATURES
R-75-20	BAYHEAT VCS-75	20' Tube package, 75,000 BTU with gas shut-off cock and flex line
R-100-30	BAYHEAT VCS-100	30' Tube package, 100,000 BTU with gas shut-off cock and flex line
R-125-40	BAYHEAT VCS-125	40' Tube package, 125,000 BTU with gas shut-off cock and flex line
R-150-50	BAYHEAT VCS-150	50' Tube package, 150,000 BTU with gas shut-off cock and flex line



BAYHEAT ELECTRIC HEATERS

BAYWATCH CAR WASH DOOR SOLUTIONS



PART #	PRODUCT	DESCRIPTION/FEATURES
BH-E-10KW	BAYHEAT EWHB 10 kW	Stainless steel electric unit heater for high moisture environments. 34,000 BTU. Wall Bracket. 24V Controls
R-100-30	BAYHEAT EWHB 15 kW	Stainless steel electric unit heater for high moisture environments. 52,000 BTU. Wall Bracket. 24V Controls
R-125-40	BAYHEAT EGW-5 kW	Electric unit heater. Wall or ceiling mount. For equipment room heating

BAYHEAT ACCESSORIES

BAYWATCH CAR WASH DOOR SOLUTIONS



PART #	PRODUCT	DESCRIPTION/FEATURES
HR-003-00	I-RTVP-4-I-F ROOFTOP EXHAUST PKG	Rooftop exhaust package. Flat 4" with tall cone flat flashing. 4' B-Vent, storm collar, 4" 90° adjustable B-Type elbow, B-Type to single wall reducer and low profile intel top
HR-003-01	RTVP-4-I-A ROOFTOP VENT KIT ADJUSTABLE	Rooftop vent kit. Adjustable 4" with low wind vent top storm collar, 5' single wall 4" pipe, adjustable 90° elbow, appliance connector and adjustable roof flashing.

HEATING FIXTURES

HIGH-EFFICIENCY GAS FIRED COMMERCIAL SPACE HEATERS

REZNOR

This gas-fired heating unit is housed in an attractive gloss white cabinet and is power vented to avoid heat losses up the flue pipe and save you money over time. UDAP space heaters boast 82-83% thermal efficiency, which means they meet most thresholds for utility company rebates.



SPECIFICATIONS & KEY FEATURES

- 82-83% thermal efficiency - TOP IN ITS CLASS!
- 50-60° F rise range
- Tcoore2 titanium stabilized aluminized steel heat exchanger
- Patented single burner combustion system including a one-piece burner assembly
- 115/1/60 Supply voltage
- 115V open fan motor with internal overload protection
- Transformer for 24-volt controls
- Integrated circuit board with diagnostic indicator lights
- Multi-try direct spark ignition with timed lockout
- Fan relay (included on the circuit board)
- Single-stage natural gas valve (field adjustable for operation to 9,000 ft. elevation)
- Vibration/noise isolated fan and venter motors - designed for low noise operation
- 2-pt and 4-pt Suspension - standard on all sizes
- External terminal strip for 24V wiring
- External gas connection
- Full fan guard - engineered for safety
- Improved cabinet design with less visible hardware

\$1,065.35	UDX-45	45,000 BTU
\$1,247.71	UDX-75	75,000 BTU
\$1,515.04	UDX-125	120,000 BTU

BOILERS



TRINITY LX BOILERS



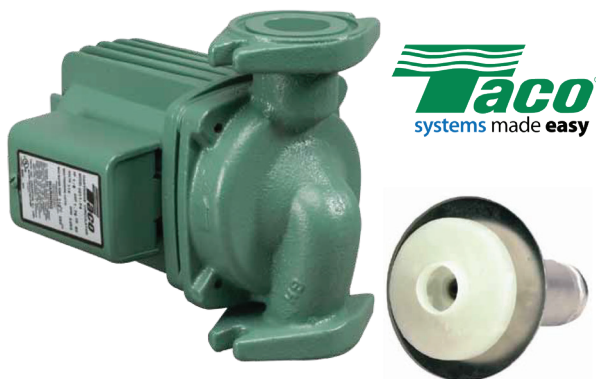
- **91+% EFFICIENT, WALL HUNG, CONDENSING GAS, BOILER FOR NATURAL GAS OR PROPANE!**
- NTI's combustion system produces the highest industry modulation rates, which allows the Trinity to modulate the burner to the exact size required to meet the conditions of the system. The Trinity incorporates an electronic state-of-the-art combustion system to reduce the amount of gas that is injected into the burner, to ensure proper combustion throughout the full range of modulation. This system also compensates for extended venting; therefore, adjustments are not required between short and long vent runs. The Trinity is a totally sealed combustion system: all combustion air is drawn from outside, used for combustion and then expelled.

SPECIFICATIONS	LX300	LX400
SIZE (D X W X L)	36" x 17" x 21"	23.5" x 21" x 36"
WEIGHT	125 lbs	205 lbs
MAX. PRESSURE	160 PSI	145 PSI
MAX. VENT	4'6" - 100'	4"-30', 6"-65' eqv.
GAS CONNECTION SIZE	1/2"	3/4" NPT
BTU INPUT	55,000 - 275,000	75,000 - 399,000
BTU OUTPUT	52,000 - 251,000	69,000 - 365,000
S.S. EFFICIENCY	93%	96%
HEAD LOSS @ GPM	7' @ 14	9' @ 20
SUPPLY/RETURN	1 1/4" NPT	1 1/4" NPT
BOILER MODULATION RATIO	5:1	5.3:1
PRICE	\$8,003.07	CALL

WHEN PURCHASING A TRINITY BOILER, YOU MUST PURCHASE A TACO® CARTRIDGE CIRCULATOR

0011 CARTRIDGE CIRCULATOR

TACO® SYSTEMS

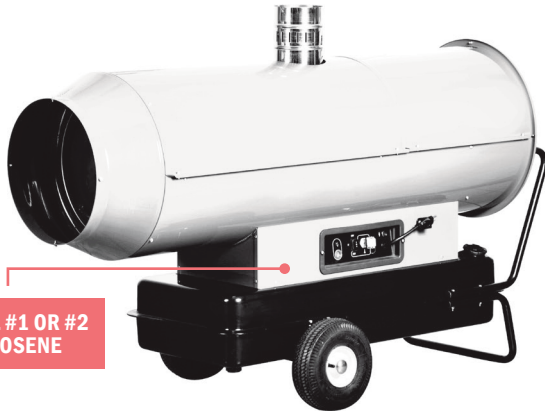


- The High Velocity series Taco 0011 Cartridge circulator is designed for high head/medium flow applications in residential or light commercial hydronic heating, radiant heating, and chilled water cooling systems. The unique ACB anti-condensate baffle with ambient air flow prevents the build up of condensate on the motor windings when pumping chilled water. Its unique field-serviceable cartridge contains all moving parts. Replacing the cartridge rebuilds the circulator. With no mechanical seal, the self-lubricating, maintenance-free design provides unmatched reliability. Compact and lightweight, with excellent performance characteristics, the 0011 is ideal for installations where space is a premium.

- **FLOW RANGE:** 0 - 31 GPM
- **HEAD RANGE:** 0 - 31'
- **MIN. FLUID TEMPERATURE:** 40°F (4°C)
- **MAX. FLUID TEMPERATURE:** 230°F (110°C)
- **MAX. WORKING PRESSURE:** 125 PSI
- **CONNECTION SIZES:** 3/4", 1", 1 1/4", 1 1/2" Flanged

\$458.33 TACO4000

PORTABLE HEATERS



**DIESEL #1 OR #2
KEROSENE**



**DIESEL #1 OR #2
KEROSENE**

EC SERIES INDIRECT-FIRED PORTABLE HEATERS

PORTABLE HEATERS

- Overheating thermostat (safety device turns off unit and requires a manual reset)
- AISI 430 stainless steel combustion chamber with four-pass heat exchanger technology (EC 200-EC300)
- Single Fuel Line Kit: This accessory allows the unit to recirculate hot oil from the return line back into the filter. The hot oil in the filter eases restarts and increases the performance of the unit in extreme cold temperature
- Combustion air pressure switch (safety device turns off unit and requires a manual reset)
- No supervision required can be controlled by thermostat, humidistat or timer
- Automatic post ventilation cycle to cool down the combustion chamber
- Fuel lines in hydrocarbon-resistant rubber wire-mesh protected
- Oil filter; pre-heated oil filter (EC200-EC300)
- Approved for construction
- 1' power cord
- Bayonet-type fuel tank cap
- Fuel tank drain plug
- Electric control panel (see page 4)
- Electronic flame control unit
- 10" pneumatic wheels

INFO	EC 100	EC 200	EC 300
HEAT INPUT BTU/H	112,141	204,873	293,982
HEAT OUTPUT BTU/H	94,759	183,362	258,704
FUEL CONSUMPTION US GAL/H	0.81	1.48	2.17
HEATED AIRFLOW CFM	1,020	1,530	2,530
TEMPERATURE RISE (@64°F)	95°F	136°F	126°F
POWER SUPPLY V, PH, HZ	120, 1, 60	120, 1, 60	120, 1, 60
FAN MOTOR POWER HP (RPM)	1/4 (3,300)	5/8 (3,300)	1 (1,700)
CURRENT RATING AMPS	4.05	7.65	11.80
MAX LENGTH FLEX. DUCT (1-WAY)	25 FT	50 FT	75 FT
MAX LENGTH FLEX. DUCT (2-WAY)	--	25 FT	35 FT
FLUE SIZE	6"	6"	6"
TANK CAPACITY	11 Gal	17.2 Gal	27.7 Gal
RUN TIME	14 Hours	14 Hours	13 Hours

HEATERS		
\$2,212.63	HTR487002	EC 100 - 100,000 BTU
\$3,137.88	HTR487003	EC 200 - 200,000 BTU
\$3,781.54	HTR487004	EC 300 - 300,000 BTU
HEATER ACCESSORIES		
\$69.28	HTR487105	Fuel Level Gauge
\$21.57	HTR487106	Fuel Tank Filler
\$58.47	HTR487107	Lifting Bracket
\$137.64	HTR487109	One Way Duct Adapter - 12" (EC 100)
\$176.24	HTR487110	One Way Duct Adapter - 14" (EC 200)
\$324.18	HTR487112	Two Way Duct Adapter (EC 200)
\$400.10	HTR487113	Two Way Duct Adapter (EC 300)
\$308.47	HTR487115	External Fuel Tank Connect Kit
\$363.16	HTR487116	External Fuel Tank Kit w/ Deaerator



FIRE 155 INFRARED PORTABLE HEATER

PORTABLE HEATERS

- Metallic forced air insulation pocket between the combustion chamber and the external protection cone
- Single Fuel Line Kit: This accessory allows the unit to recirculate hot oil from the return line back into the filter. The hot oil in the filter eases restarts and increases the performance of the unit in extreme cold temperature
- Combustion air pressure switch (safety device turns off unit and requires manual reset)
- No supervision required: can be controlled by thermostat, humidistat or timer
- Automatic post-ventilation cycle to cool down the combustion chamber
- Possibility of directing the cone up and down with locking mechanism
- Fuel lines in hydrocarbon-resistant rubber wire-mesh protected
- Direct heat flow by radiation with no air movement
- Oil filter included (optional pre-heated oil filter)
- Built-in oil burner with Danfoss gear pump
- Electronic flame control unit with metal casing
- AISI 430 stainless steel combustion chamber
- Low noise level
- Screw-on fuel cap
- Fuel tank drain plug
- 12" reinforced plastic wheels
- Approved for construction
- 1' power cord
- Shockproof polyethylene fuel tank
- Single point lift bail
- Floor protection sliding shield

MAX POWER 2ND STAGE	154,237 BTU
FUEL CONSUMPTION 2ND STAGE - 1ST STAGE	1.11 GPH
POWER SUPPLY	120V, 1PH, 60HZ
FAN MOTOR POWER	1/2HP, 3,300 RPM
TANK CAPACITY	17.2 Gal
RUN TIME 2ND STAGE - 1ST STAGE	16 Hours

\$2,850.02	HTR487001	155,000 BTU
-------------------	------------------	-------------

HEATER ACCESSORIES		
\$134.36	HTR487101	Heavy Duty Thermostat w/ 30' Cable
\$69.28	HTR487102	Fuel Level Gauge
\$238.38	HTR487103	Pre Heated Oil Filter
\$44.78	HTR487104	Single Fuel Line Kit



CALIFORNIA PROPOSITION 65 NOTE: some items on this page may fall under the Proposition 65 act. Please consult the State of California Proposition 65 list (oehha.ca.gov/proposition-65/proposition-65-list) to learn more and to see a comprehensive list of Proposition 65 chemicals.

EQUIPMENT

PORTABLE HEATERS



FLAME 115 INFRARED PORTABLE HEATER

PORTABLE HEATERS

- The innovation of the Flame115 Infrared Heater lies in the elimination of the refractory material cone that surrounds the conical combustion chamber that's typical of other competitors units. Our heater features a metallic forced air insulation pocket between the combustion chamber and the external protection cone. The cooling air is blown through the pocket by the burner fan. This innovative technology over comes the well-known problem of the fragility and brittleness of the ceramic cone.
- Electronic flame control unit with metal casing
- Approved for construction & agriculture
- Automatic post-ventilation cooling cycle
- Directional cone locking mechanism
- Built-in oil burner with gear pump
- Shockproof polyethylene fuel tank
- Extendable sliding floor shield
- Patented triple cone design
- CSA approved
- Low noise level
- Screw-on fuel gauge
- AISI 309 L stainless steel cone
- Fuel tank drain plug
- Only 92 lbs.
- Remote thermostat plug
- 8" reinforced plastic wheels

MAX POWER 2ND STAGE	115,160 BTU/H
FUEL CONSUMPTION 2ND STAGE	0.85 US GAL/H
POWER SUPPLY	120,1,60 V, PH, HZ
FAN MOTOR POWER	1/4 (3,300) HP (RPM)
TANK CAPACITY	11.35 US GAL
RUN TIME 2ND STAGE	13.4 HOUR

CALL **HTR487019** 115,000 BTU 

HEATING ACCESSORIES

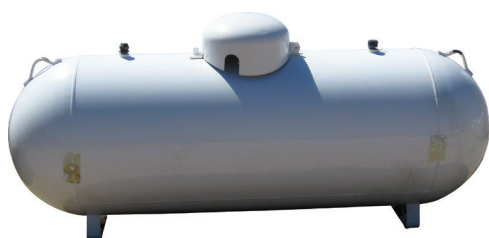


FLOOR HEAT ANTI-FREEZE

HEATING

- Keep your bay floors from freezing in cold climates or winter conditions. Frozen floors pose a safety risk to customers and employees at your wash. Make sure your wash is in good supply of anti-freeze with this 5 gallon pail!
- Freeze protection to -60 degrees Fahrenheit
- Non-toxic
- Cryo-Tek brand, manufactured by Hercules
- Corrosion-resistant

\$216.03 **FHAF5**



PROPANE TANKS

HEATING

\$43.00	PST20	20lb Tank	\$875.00	PST120VT	120 Gallon Vertical Tank
\$115.00	PST30	30lb Tank	\$2,800.00	PST500AG*	500 Gallon - Above Ground
\$120.00	PST40	40lb Tank	\$3,400.00	PST500UG*	500 Gallon - Below Ground
\$250.00	PST100	100lb Tank	\$4,600.00	PST1000AG*	1000 Gal - Above Ground
\$255.00	PSTATM	Aluminum Tow Motor Tank	\$5,250.00	PST1000UG*	1000 Gal - Below Ground

***500 & 1000 GALLON TANKS ARE AVAILABLE AS PICK-UP-ONLY ITEMS. NOT AVAILABLE FOR PICKUP AT OUR KANSAS CITY WAREHOUSE**

PROPANE TANK PARTS & ACCESSORIES

HEATING

\$21.00	PST8805	40" Copper Pigtail - U-Shaped	\$25.00	PST8800	Propane T-Block
\$12.00	PST8810	20" Copper Straight Pigtail	\$250.00	PSTANODE	Anode Bag for Underground Tank

CALIFORNIA PROPOSITION 65 NOTE: some items on this page may fall under the Proposition 65 act. Please consult the State of California Proposition 65 list (oehha.ca.gov/proposition-65/proposition-65-list) to learn more and to see a comprehensive list of Proposition 65 chemicals.

VACUUM PIT CLEANERS



RING-O-MATIC 750 VAC
VACUUM PIT CLEANERS



- An electric start 11HP Honda engine and a 160 CFM (cubic feet per minute) vacuum/blower capable of 25 inHg of vacuum. This unit has a 650 gallon collection tank capacity (9,990 lbs fully loaded weight).
- A good solution for operators who have pits deeper than 7'6". The 750 vac pit cleaner operates efficiently at depths up to 10'. See our 750 Deep Vac for cleaning pits up to 15' deep - great for car washes with limited access pits!
- The 750 vac can empty a typical 100 cubic foot sediment pit in about 40 minutes.
- Easy to use and to unload. The tank is dumped using a hydraulic lift system. The mud load is set free from inside the tank by using a pneumatic load breaker.
- Both the pneumatic load breaker and the hydraulic system are driven by the pit cleaner's engine with simple, easy-to-use controls.
- The 750 vac weighs in at 9,990 lbs fully loaded. This means it can be safely and legally pulled by a full size pick-up. Check your vehicle to see if it is rated to safely handle this conveniently sized unit.

SPECIFICATIONS:

- **TANK CAPACITY:** 85 cu ft, 650 gal., 3.2 cu yd
- **EMPTY WEIGHT:** 3120 lbs
- **OVERALL TRAILER:** 75" W x 15' L x 7' H
- **HEIGHT IN TRANSPORT:** 7'
- **MAX DIG DEPTH:** 10' below ground level
- **ENGINE:** Electric Start 11 HP Honda
- **MAX HEIGHT IN OPERATION:** 7'

INCLUDES:

- 2 5/16" ball hitch
- Jack
- 235/80/R16 tires

CALL PITPUMP750V



RING-O-MATIC 850 DEEP VAC
VACUUM PIT CLEANERS



- Engine - electric start OHV air cooled 21 HP
- 230 CFM (cubic feet per minute) vacuum/blower capable of 25 inHg of vacuum
- The 850 Deep Vac is an ideal pit cleaner for operators who have car washes with limited access pits. These pits are often the secondary pits where cleaning access is available through a manhole or other small opening.
- Easy to use and to unload. The tank is dumped using a hydraulic lift system. Mud-cake is set free from the bottom of the collection tank using a pneumatic load breaker. The pneumatic load breaker and the hydraulic system are driven by the pit cleaner's engine with simple, easy-to-use controls. The 850 Deep Vac can also be unloaded with its pressurized off-load feature.
- Weighs in at 12,800 lbs fully loaded. This means it can be safely and legally pulled by a full size pick-up. Check your vehicle to see if it is rated to safely handle this conveniently sized unit.

SPECIFICATIONS:

- **TANK CAPACITY:** 107 cu ft, 800 gal., 3.9 cu yd
- **EMPTY WEIGHT:** 3600 lbs
- **OVERALL TRAILER:** 75" W x 20' L x 7' H
- **HEIGHT IN TRANSPORT:** 7'
- **MAX DIG DEPTH:** 15' below ground level
- **ENGINE:** Electric Start 11 HP Honda
- **MAX HEIGHT IN OPERATION:** 7'

INCLUDES:

- 2 5/16" ball hitch
- Jack
- 235/80/R16 tires

CALL PITPUMP850DV

EXCAVATOR PIT CLEANERS



RING-O-MATIC 500T
EXCAVATOR PIT CLEANERS



SPECIFICATIONS:

- **MUD BOX CAPACITY:** 41 cu ft, 330 gallon, 1.5 cu yd
- **MAX DIG DEPTH:** 5' below ground level*
- **BUCKET SIZE:** 12" W x 20" L, 1ft³ capacity
- **BOX DIMENSIONS:** 44" W x 96" L x 17" H
- **ENGINE:** 6.5 HP Honda
- **OVERALL TRAILER LENGTH:** 15'5"
- **EMPTY WEIGHT:** 1500 lbs
- **LOADED WEIGHT:** 7100 lbs
- **HEIGHT IN TRANSPORT:** 7'2"

INCLUDES:

- 2 5/16" ball hitch
- Jack
- 235/80/R16 tired

CALL PITPUMP500T

UPGRADE BOOM ALLOWS 7'6" DEPTH

RING-O-MATIC 1000H
EXCAVATOR PIT CLEANERS



SPECIFICATIONS:

- **MUD BOX CAPACITY:** 67.5 cu ft, 505 gallon, 2.5 cu yd
- **MAX DIG DEPTH:** 8' 4" below ground level
- **BUCKET SIZE:** 12" W x 20" L, 1ft³ capacity
- **BOX DIMENSIONS:** 44" W x 96" L x 29" H
- **ENGINE:** 8 HP Honda
- **OVERALL TRAILER LENGTH:** 16'3"
- **EMPTY WEIGHT:** 2200 lbs
- **LOADED WEIGHT:** 10,000 lbs
- **HEIGHT IN TRANSPORT:** 7' 5"

INCLUDES:

- 2 5/16" ball hitch
- Jack
- 235/80/R16 tired

CALL PITPUMP1000H

New!



EQUIPMENT

PIT ENZYMES, DEODORIZERS & GRATING



PIT ENZYME AP FORMULATORS



- Used in reclaim systems as an odor/oil remover. Enzymes eat oil and odor causing bacteria
- 5 gallons | RTU - no dilution necessary
- Fresh & Clean fragrance

\$112.45 **APF5520**



PIT DEODORIZER NATIONAL AUTOMOTIVE CHEMICAL



- Remove the odor in both self-serve pits and reclaim systems - keeps bays smelling fresh
- Cinnamon scented

PRICE	PART #	GALLONS	DILUTION
CALL	NAP5406	5	240-500:1
CALL	NAD55406	55	

KLEEN-RITE EZ-GRATE

EZ-GRATE FIBERGLASS CAR WASH GRATING

KLEEN-RITE



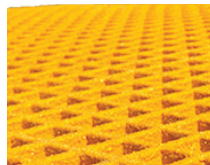
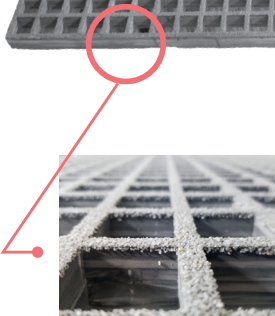
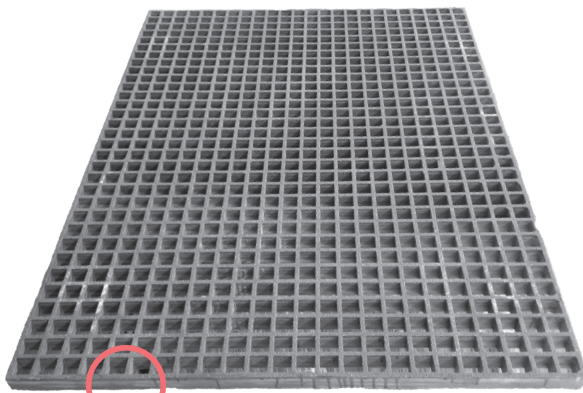
• Kleen-Rite EZ-Grate is a tough fiberglass grating option for car wash pits and industrial drain areas. Made with durable polyester resin with a gritty no-slip grip. The reduced size of EZ-Grate allows it to be moved and lifted much easier, has a smaller footprint for shipping, allows for easier shape customization without cutting, and lets you replace small sections of grating if damage occurs rather than huge sections.

- Gray or yellow color option
- 1 1/4" squares, 1 1/2" thickness
- Gritty non-slip top
- Easier moving and lifting
- Smaller shipping footprint
- Shape customization with less cutting
- 4' x 4' or 3' x 4' pieces
- Super-tough polyester resin fiberglass construction
- Reduced size versus traditional grating
- Non-metal material means no theft for scrapping
- Corrosion-resistant for wet, harsh environments
- Ability to replace smaller sections

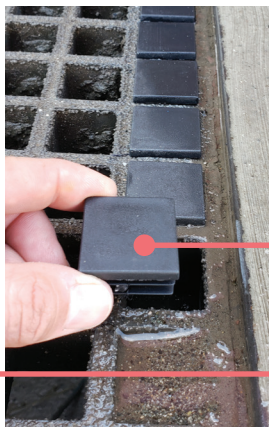
GRAY GRATING			YELLOW GRATING		
\$136.77	FG34G-GRIT	3' x 4' Panel	\$136.77	FG34Y-GRIT	3' x 4' Panel
\$149.92	FG44G-GRIT	4' x 4' Panel	\$149.92	FG44Y-GRIT	4' x 4' Panel

LOAD	SUPPORT/ CLEAR SPAN (IN)	UNIFORM LOAD (LBF/FT ²)					AVG. MAX LOAD
		100	200	300	400	500	
		AVG. MIDSPAN DEFLECTION (IN)					
Uniform	18	0.18	0.21	0.24	0.26	0.29	1042

LOAD	SUPPORT/ CLEAR SPAN (IN)	CONCENTRATED LOAD (LBF)					AVG. MAX LOAD	
		100	200	300	400	500		
		AVG. MIDSPAN DEFLECTION (IN)						
Concentrated	18	0.012	0.020	0.027	0.033	0.039	0.067	10307



GRATE ACCESSORIES



MUD STOPPER FIBERGLASS GRATE PLUGS

VACUUM PROSPECTOR

Have you noticed that mud, grime, and grit sometimes builds up in the outer holes of the fiberglass grating in your car wash bay? It's difficult to clean out this sludge and it might begin to collect gravel and small pieces of trash. This is unattractive and potentially unsafe for customers. In addition, this increases the possibility that brushes will pick up solid particles that can scratch or damage vehicle surfaces. Mud Stopper plugs easily and quickly solve this problem! Once you identify which holes in your grating collect mud, you can clean them out and insert a plug in each one. This directs the mud and sludge further towards the center of the grate where it will fall into the pit instead of collecting.

- 100 plugs included
- Use with fiberglass car wash grating
- Fits 1 1/4" square grate holes
- Easy install - use a mallet or hammer!

\$39.00 **MS32**

MAT CLEANERS



RUG BEATER

DRALCO MAT CLEANERS



USE FOR CLEANING THE FOLLOWING OFF OF FLOOR MATS:

- Sand
- Ice
- Ground in dirt
- Grass
- Dirt
- Snow
- Dog hair
- Food stains (with stain remover)

RUG BEATER FEATURES:

- Stainless steel
- Direct-drive motor
- Cleans mats up to 34"
- Pressure plate automatically adjusts to mat thickness
- 110V, 120V power supply
- Fully tested before shipped
- No water/sewer needed

\$5,479.27	RB200	Full Service
\$6,942.68	RB300	Coin Operated



MATWACKER

DRALCO MAT CLEANERS



MATWACKER FEATURES:

- Cleans mats up to 30" wide
- Patented skip-brush technology
- (2) Greasable bearings
- Indoor/Outdoor service
- 110VAC Standard Power
- Galvalume steel construction
- ½ HP Single Phase motor
- Shutoff & Adjustable Timer

AVAILABLE OPTIONS:

- Urethane Wheels/Locking
- Spray bottle holder
- Extended warranty

MATWACKER DIMENSIONS & WEIGHT:

- Length: 40"
- Height: 35¾"
- Depth: 18¾"
- Weight: 225 lbs.

\$4,434.46	MW110
-------------------	--------------



MAT-VAC® WITH CENTRAL VAC EXTENSION

J-KO U.S.A.



- 50" H x 45" W x 21" D
- Weight: 230 lbs.
- Power: 110V (20 AMPS)
- Speed: Vacuums mat in 5 seconds
- Connects directly to central vac system. Suction valve open only when machine is in use.
- All stainless steel

CALL	JKMV-CV
-------------	----------------



MAT-VAC® WITH VAC MOTOR & TANK

J-KO U.S.A.



- 50" H x 45" W x 21" D
- Weight: 255 lbs.
- Power: 110V (20 AMPS)
- Speed: Vacuums mat in 5 seconds
- Push button and adjustable automatic turn off
- All stainless steel

CALL	JKMV-VT
-------------	----------------



BB-X EXPRESS MODEL

J-KO U.S.A.



- 55" H x 37" W x 31" D
- Weight: 350 lbs.
- Two high speed brushes
- 10 seconds per mat
- Features start push button and adjustable automatic turn off
- All stainless steel

CALL	JKBBX
-------------	--------------



J-KO offers custom decals at no extra cost.

Customize the graphics on your mat cleaners when placing your order!



SENSOR DYNAMIX



New!

SELF-SERVE PRESSURE MONITORING SENSOR

SENSOR DYNAMIX

One of Sensor Dynamix's most popular sensors is their Self-Serve Pressure unit. This device remotely monitors self-serve high-pressure cycles in real time to increase efficiencies and check for malfunctions. Instant notifications for virtually all malfunctions or failures, which helps recapture lost revenue with drastically decreased response times.

FEATURES:

- Manage device and view all data through the SD Live app
- 1/4" NPT Pressure transmitter
- Power: 110V AC wall outlet
- 6ft power cable
- 24V AC coil (different voltages available with special order)
- 3' coil wiring
- WiFi connectivity
- Waterproof
- High accuracy
- Small, compact design
- Simple installation

\$399.00 **PSA**

Monthly fee required.

Register at www.SensorDynamix.com/Registration/Kleen-Rite when placing order.



New!

AUTOMATIC PRESSURE MONITORING SENSOR

SENSOR DYNAMIX

One of Sensor Dynamix's most popular sensors is their In-Bay Automatic Pressure unit. This device remotely monitors in-bay automatic high-pressure cycles in real time to increase efficiencies and check for malfunctions. Instant notifications for virtually all malfunctions or failures, which helps recapture lost revenue with drastically decreased response times.

FEATURES:

- Manage device and view all data through the SD Live app
- 1/2" NPT Pressure transmitter
- Power: 110V AC wall outlet
- 6ft power cable
- 110V AC coil (different voltages available with special order)
- 3' coil wiring
- WiFi connectivity
- Waterproof
- High accuracy
- Small, compact design
- Simple installation

\$399.00 **PAA**

Monthly fee required.

Register at www.SensorDynamix.com/Registration/Kleen-Rite when placing order.



New!

AUXILIARY LOW PRESSURE MONITORING SENSOR

SENSOR DYNAMIX

Sensor unit that monitors a variety of potential issues with the low-pressure auxiliary systems at car washes. Get instant notifications to your smart phone using the SD Live app. You can also schedule maintenance schedule reminders!

FEATURES:

- Manage device and view all data through the SD Live app
- 1/4" NPT Pressure transmitter
- Power: 110V AC wall outlet
- 6ft power cable
- 110V AC coil (different voltages available with special order)
- 3' coil wiring
- WiFi connectivity
- Waterproof
- High accuracy
- Small, compact design
- Simple installation

\$399.00 **PLA**

Monthly fee required.

Register at www.SensorDynamix.com/Registration/Kleen-Rite when placing order.



New!

AUTOMATIC STATUS AND REVENUE MONITORING SENSOR

SENSOR DYNAMIX

Real-time remote monitoring of in-bay automatic pay stations to increase efficiencies or check for malfunctions. This sensor device monitors all revenue and sends instant notifications triggered by out-of-order malfunctions, dramatically decreasing unexpected downtime.

FEATURES:

- Manage device and view all data through the SD Live app
- Power: 110V AC
- 110V AC coil for status trigger (different voltages available with special order)
- 24V AC coils for wash counting (different voltages available with special order)
- 3' wiring length
- WiFi connectivity
- Waterproof
- Small, compact design
- Simple installation

\$279.00 **AAA**

Monthly fee required.

Register at www.SensorDynamix.com/Registration/Kleen-Rite when placing order.

SENSOR DYNAMIX

BILL CHANGER STATUS MONITORING SENSOR

SENSOR DYNAMIX

Sensor unit that monitors out-of-order malfunctions on bill changers. Compatible with any age of bill changer.

FEATURES:

- Manage device and view all data through the SD Live app
- Power: 110 VAC
- Common 110 VAC or 24 VDC coils (different voltages available with special order)
- 3' wiring length
- WiFi connectivity
- Waterproof
- Small, compact design
- Simple installation

\$199.00	SBA	Compatible with all others
\$199.00	SBA-H	For Hamilton Bill Changer
\$199.00	SBA-A	For American Bill Changer

Monthly fee required. Register at www.SensorDynamix.com/Registration/Kleen-Rite when placing order.

SELF-SERVE REVENUE MONITORING SENSOR

SENSOR DYNAMIX

This sensor monitors your self-serve bay revenue in real-time! This includes all customer transactions: credit cards, cash, coin, and any other revenue sources.

FEATURES:

- Manage device and view all data through the SD Live app
- 24V AC coin system required
- Includes 24V AC to 5V DC power supply for sensor
- WiFi connectivity (includes external mounted antenna)
- Waterproof
- High accuracy
- Small, compact design
- Simple installation

\$149.00	RSA
-----------------	------------

Monthly fee required. Register at www.SensorDynamix.com/Registration/Kleen-Rite when placing order.

AIR TEMPERATURE MONITORING SENSOR

SENSOR DYNAMIX

One of our most efficient sensors monitors any air temperature in real time to increase efficiencies or check for malfunctions.

FEATURES:

- Manage device and view all data through the SD Live app
- Power: 110V AC wall outlet
- 6' power cable
- WiFi connectivity
- Waterproof
- High accuracy
- Small, compact design
- Simple installation

\$448.56	TAA
-----------------	------------

Monthly fee required. Register at www.SensorDynamix.com/Registration/Kleen-Rite when placing order.

LIQUID TEMPERATURE MONITORING SENSOR

SENSOR DYNAMIX

This sensor monitors any liquid temperature in real-time to increase efficiencies and check for malfunctions. The most popular utilizations include floor heat systems and constant water boilers. Its customizable thresholds allow for instant notifications for any circumstance.

FEATURES:

- Manage device and view all data through the SD Live app
- Power: 110V AC wall outlet
- 1/2" NPT
- 6' power cable
- WiFi connectivity
- Waterproof
- High accuracy
- Small, compact design
- Simple installation

\$179.00	TLA
-----------------	------------

Monthly fee required. Register at www.SensorDynamix.com/Registration/Kleen-Rite when placing order.

INTERNAL LIQUID LEVEL MONITORING SENSOR

SENSOR DYNAMIX

Sensor unit that monitors liquid levels in applications like raw chemicals and spot-free rinse tanks.

FEATURES:

- Manage device and view all data through the SD Live app
- Customizable for any liquid material compatibility
- Power: 110V AC wall outlet
- 4' power cable
- WiFi connectivity
- Waterproof
- High accuracy
- Small, compact design
- Simple installation

\$449.00	LIA
-----------------	------------

Monthly fee required. Register at www.SensorDynamix.com/Registration/Kleen-Rite when placing order.

EXTERNAL LIQUID LEVEL MONITORING SENSOR

SENSOR DYNAMIX

Sensor unit that monitors liquid levels in applications like rinse water and chemical mixing reservoirs.

FEATURES:

- Manage device and view all data through the SD Live app
- Customizable for any liquid material compatibility
- Power: 110V AC wall outlet
- 4' power cable
- WiFi connectivity
- Waterproof
- High accuracy
- Small, compact design
- Simple installation

\$449.00	LEA
-----------------	------------

Monthly fee required. Register at www.SensorDynamix.com/Registration/Kleen-Rite when placing order.



New!



New!



New!



New!



New!



New!